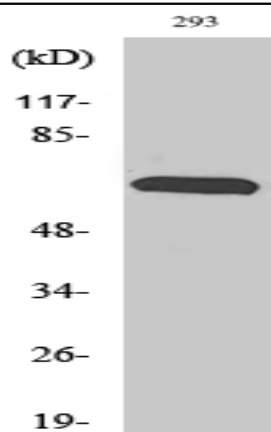


Rab11-FIP4 Polyclonal Antibody

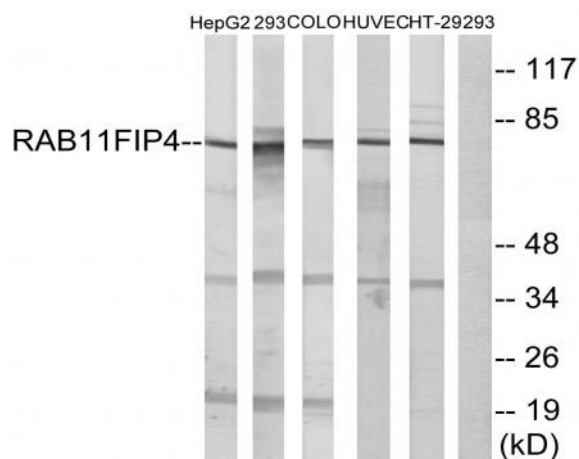
Catalog No :	YT3945
Reactivity :	Human;Mouse
Applications :	WB;IHC;IF;ELISA
Target :	Rab11-FIP4
Fields :	>>Endocytosis
Gene Name :	RAB11FIP4
Protein Name :	Rab11 family-interacting protein 4
Human Gene Id :	84440
Human Swiss Prot No :	Q86YS3
Mouse Gene Id :	268451
Mouse Swiss Prot No :	Q8BQP8
Immunogen :	The antiserum was produced against synthesized peptide derived from human RAB11FIP4. AA range:452-501
Specificity :	Rab11-FIP4 Polyclonal Antibody detects endogenous levels of Rab11-FIP4 protein.
Formulation :	Liquid in PBS containing 50% glycerol, 0.5% BSA and 0.02% sodium azide.
Source :	Polyclonal, Rabbit,IgG
Dilution :	WB 1:500 - 1:2000. IHC 1:100 - 1:300. ELISA: 1:40000.. IF 1:50-200
Purification :	The antibody was affinity-purified from rabbit antiserum by affinity-chromatography using epitope-specific immunogen.
Concentration :	1 mg/ml

Storage Stability :	-15°C to -25°C/1 year(Do not lower than -25°C)
Observed Band :	95kD
Cell Pathway :	Endocytosis;
Background :	Proteins of the large Rab GTPase family (see RAB1A; MIM 179508) have regulatory roles in the formation, targeting, and fusion of intracellular transport vesicles. RAB11FIP4 is one of many proteins that interact with and regulate Rab GTPases (Hales et al., 2001 [PubMed 11495908]).[supplied by OMIM, Apr 2008],
Function :	function:A Rab11 effector protein acting in the endosomal trafficking.,similarity:Contains 1 EF-hand domain.,subcellular location:Colocalizes with RAB11A in the endocytic recycling compartment (ERC).,subunit:Homooligomer. Forms an heterooligomeric complex with RAB11FIP2, RAB11FIP3 and RAB11FIP5. Interacts with RAB11A that has been activated by GTP binding.,
Subcellular Location :	Endosome . Cytoplasm, cytoskeleton, spindle . Cytoplasm, cytoskeleton, microtubule organizing center, centrosome . Recycling endosome membrane ; Peripheral membrane protein. Cleavage furrow . Midbody . Cytoplasmic vesicle . Recruited to the cleavage furrow and the midbody during cytokinesis. .
Expression :	Present at high level in testis (at protein level). Weakly expressed in other tissues.
Sort :	13241
No4 :	1
Host :	Rabbit
Modifications :	Unmodified

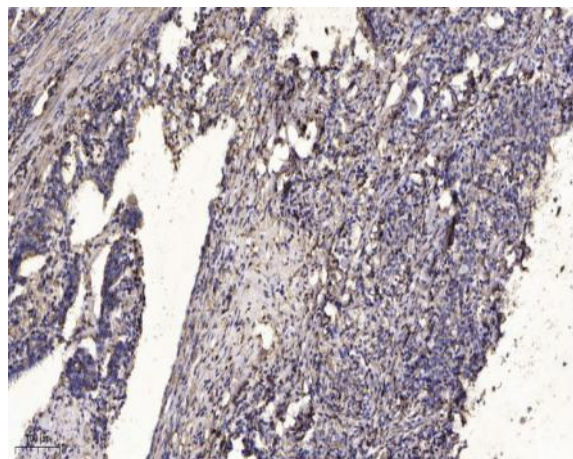
Products Images



Western Blot analysis of various cells using Rab11-FIP4 Polyclonal Antibody



Western blot analysis of lysates from 293, COLO, HUVEC, HepG2, and HT-29 cells, using RAB11FIP4 Antibody. The lane on the right is blocked with the synthesized peptide.



Immunohistochemical analysis of paraffin-embedded human Gastric adenocarcinoma. 1, Antibody was diluted at 1:200(4° overnight). 2, Tris-EDTA,pH9.0 was used for antigen retrieval. 3,Secondary antibody was diluted at 1:200(room temperature, 45min).