

RAB3IP Polyclonal Antibody

Catalog No :	YT3946
Reactivity :	Human;Mouse;Rat
Applications :	WB;IHC;IF;ELISA
Target :	RAB3IP
Gene Name :	RAB3IP
Protein Name :	Rab-3A-interacting protein
Human Gene Id :	117177
Human Swiss Prot No :	Q96QF0
Mouse Gene Id :	216363
Mouse Swiss Prot No :	Q68EF0
Rat Swiss Prot No :	Q62739
Immunogen :	The antiserum was produced against synthesized peptide derived from human RAB3IP. AA range:257-306
Specificity :	RAB3IP Polyclonal Antibody detects endogenous levels of RAB3IP protein.
Formulation :	Liquid in PBS containing 50% glycerol, 0.5% BSA and 0.02% sodium azide.
Source :	Polyclonal, Rabbit,IgG
Dilution :	WB 1:500 - 1:2000. IHC 1:100 - 1:300. ELISA: 1:40000.. IF 1:50-200
Purification :	The antibody was affinity-purified from rabbit antiserum by affinity-chromatography using epitope-specific immunogen.
Concentration :	1 mg/ml

Storage Stability : -15°C to -25°C/1 year(Do not lower than -25°C)

Observed Band : 53kD

Background : similarity:Belongs to the SEC2 family.,subcellular location:Predominantly cytoplasmic but a small proportion colocalizes with SSX2 in the nucleus.,subunit:Interacts with the N-terminal region of SSX2. Interacts with RAB3A and RAB3D.,tissue specificity:Expressed in brain, kidney, heart, pancreas and placenta. Not detected in skeletal muscle or liver.,

Function : similarity:Belongs to the SEC2 family.,subcellular location:Predominantly cytoplasmic but a small proportion colocalizes with SSX2 in the nucleus.,subunit:Interacts with the N-terminal region of SSX2. Interacts with RAB3A and RAB3D.,tissue specificity:Expressed in brain, kidney, heart, pancreas and placenta. Not detected in skeletal muscle or liver.,

Subcellular Location : Cytoplasm . Nucleus . Cytoplasm, cytoskeleton . Cell projection, lamellipodium. Vesicle . Cytoplasm, cytoskeleton, microtubule organizing center, centrosome . Predominantly cytoplasmic but a small proportion colocalizes with SSX2 in the nucleus. Activation of protein kinase C results in redistribution to the periphery of lamellipodia. .

Expression : Expressed in brain, kidney, heart, pancreas and placenta. Not detected in skeletal muscle or liver.

Sort : 13246

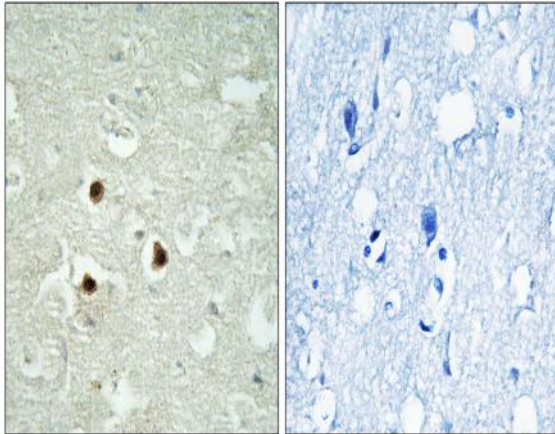
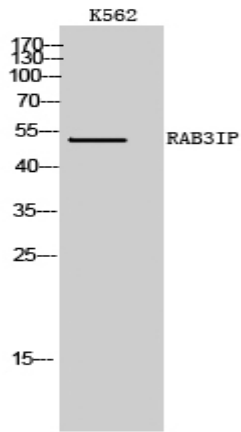
No4 : 1

Host : Rabbit

Modifications : Unmodified

Products Images

Western Blot analysis of K562 cells using RAB3IP Polyclonal Antibody



Immunohistochemistry analysis of paraffin-embedded human brain tissue, using RAB3IP Antibody. The picture on the right is blocked with the synthesized peptide.