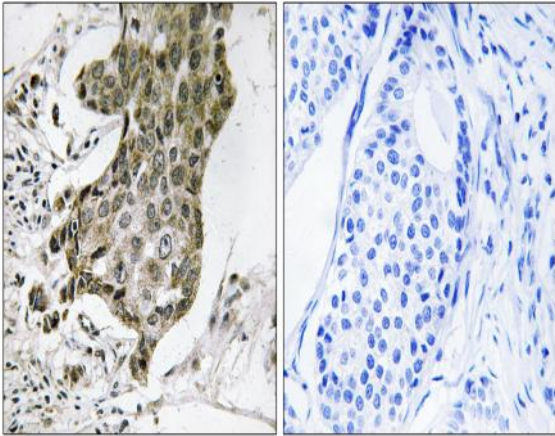


Rabaptin-5α Polyclonal Antibody

Catalog No :	YT3947
Reactivity :	Human;Mouse;Rat
Applications :	IHC;IF;ELISA
Target :	Rabaptin-5α
Fields :	>>Endocytosis
Gene Name :	RABEP1
Protein Name :	Rab GTPase-binding effector protein 1
Human Gene Id :	9135
Human Swiss Prot No :	Q15276
Mouse Gene Id :	54189
Mouse Swiss Prot No :	O35551
Rat Gene Id :	54190
Rat Swiss Prot No :	O35550
Immunogen :	The antiserum was produced against synthesized peptide derived from human RABEP1. AA range:549-598
Specificity :	Rabaptin-5α Polyclonal Antibody detects endogenous levels of Rabaptin-5α protein.
Formulation :	Liquid in PBS containing 50% glycerol, 0.5% BSA and 0.02% sodium azide.
Source :	Polyclonal, Rabbit,IgG
Dilution :	IHC 1:100 - 1:300. ELISA: 1:40000.. IF 1:50-200

Purification :	The antibody was affinity-purified from rabbit antiserum by affinity-chromatography using epitope-specific immunogen.
Concentration :	1 mg/ml
Storage Stability :	-15°C to -25°C/1 year(Do not lower than -25°C)
Molecularweight :	99kD
Cell Pathway :	Endocytosis;
Background :	function:Rab effector protein acting as linker between gamma-adaptin, RAB4A and RAB5A. Involved in endocytic membrane fusion and membrane trafficking of recycling endosomes. Stimulates RABGEF1 mediated nucleotide exchange on RAB5A.,PTM:Proteolytic cleavage by caspases in apoptotic cells causes loss of endosome fusion activity.,similarity:Belongs to the rabaptin family.,subunit:Heterodimer with RABGEF1. The heterodimer binds RAB4A and RAB5A that have been activated by GTP-binding. Binds TSC2, GGA1, GGA2, GGA3, AP1G1 and AP1G2.,
Function :	function:Rab effector protein acting as linker between gamma-adaptin, RAB4A and RAB5A. Involved in endocytic membrane fusion and membrane trafficking of recycling endosomes. Stimulates RABGEF1 mediated nucleotide exchange on RAB5A.,PTM:Proteolytic cleavage by caspases in apoptotic cells causes loss of endosome fusion activity.,similarity:Belongs to the rabaptin family.,subunit:Heterodimer with RABGEF1. The heterodimer binds RAB4A and RAB5A that have been activated by GTP-binding. Binds TSC2, GGA1, GGA2, GGA3, AP1G1 and AP1G2.,
Subcellular Location :	Cytoplasm. Early endosome. Recycling endosome. Cytoplasmic vesicle.
Expression :	Cervix carcinoma,Epithelium,Fetal brain cortex,Kidney,Plate
Sort :	13248
No4 :	1
Host :	Rabbit
Modifications :	Unmodified

[Products Images](#)



Immunohistochemistry analysis of paraffin-embedded human breast carcinoma tissue, using RABEP1 Antibody. The picture on the right is blocked with the synthesized peptide.