

Rag B Polyclonal Antibody

Catalog No :	YT3991
Reactivity :	Human;Mouse;Rat
Applications :	IHC;IF;ELISA
Target :	Rag B
Fields :	>>Autophagy - animal;>>mTOR signaling pathway;>>Shigellosis
Gene Name :	RRAGB
Protein Name :	Ras-related GTP-binding protein B
Human Gene Id :	10325
Human Swiss Prot No :	Q5VZM2
Mouse Gene Id :	245670
Mouse Swiss Prot No :	Q6NTA4
Rat Gene Id :	1.0091e+008
Rat Swiss Prot No :	Q63487
Immunogen :	Synthesized peptide derived from Rag B . at AA range: 50-130
Specificity :	Rag B Polyclonal Antibody detects endogenous levels of Rag B protein.
Formulation :	Liquid in PBS containing 50% glycerol, 0.5% BSA and 0.02% sodium azide.
Source :	Polyclonal, Rabbit,IgG
Dilution :	IHC 1:100 - 1:300. ELISA: 1:40000.. IF 1:50-200
Purification :	The antibody was affinity-purified from rabbit antiserum by affinity-

chromatography using epitope-specific immunogen.

Concentration : 1 mg/ml

Storage Stability : -15°C to -25°C/1 year(Do not lower than -25°C)

Molecularweight : 43kD

Cell Pathway : mTOR

Background : Ras-homologous GTPases constitute a large family of signal transducers that alternate between an activated, GTP-binding state and an inactivated, GDP-binding state. These proteins represent cellular switches that are operated by GTP-exchange factors and factors that stimulate their intrinsic GTPase activity. All GTPases of the Ras superfamily have in common the presence of six conserved motifs involved in GTP/GDP binding, three of which are phosphate-/magnesium-binding sites (PM1-PM3) and three of which are guanine nucleotide-binding sites (G1-G3). Transcript variants encoding distinct isoforms have been identified. [provided by RefSeq, Jul 2008],

Function : function:Involved in the RCC1/Ran-GTPase pathway. Has guanine nucleotide-binding activity but undetectable intrinsic GTPase activity.,similarity:Belongs to the GTR/RAG GTP-binding protein family.,subunit:The short isoform binds GTP (By similarity). Interacts with RRAGC and RRAGD.,

Subcellular Location : Cytoplasm . Lysosome .

Expression : Adipose tissue,Brain,Skin,

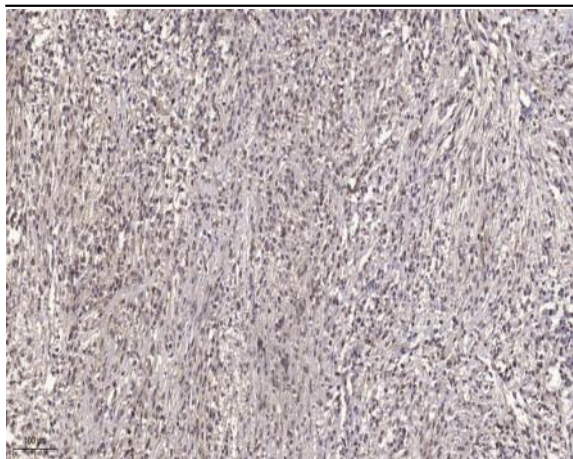
Sort : 13799

No4 : 1

Host : Rabbit

Modifications : Unmodified

Products Images



Immunohistochemical analysis of paraffin-embedded human small intestinal carcinoma tissue. 1,primary Antibody was diluted at 1:200(4° overnight). 2, Sodium citrate pH 6.0 was used for antigen retrieval(>98°C,20min). 3,Secondary antibody was diluted at 1:200