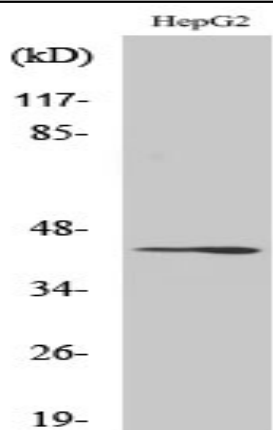


Rag C Polyclonal Antibody

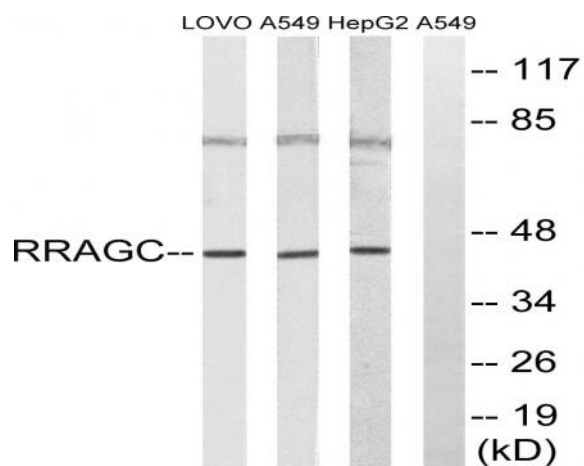
Catalog No :	YT3992
Reactivity :	Human;Mouse;Rat
Applications :	WB;ELISA;IHC CoIP
Target :	Rag C
Fields :	>>Autophagy - animal;>>mTOR signaling pathway;>>Shigellosis
Gene Name :	RRAGC
Protein Name :	Ras-related GTP-binding protein C
Human Gene Id :	64121
Human Swiss Prot No :	Q9HB90
Mouse Gene Id :	54170
Mouse Swiss Prot No :	Q99K70
Immunogen :	The antiserum was produced against synthesized peptide derived from human RRAGC. AA range:302-351
Specificity :	Rag C Polyclonal Antibody detects endogenous levels of Rag C protein.
Formulation :	Liquid in PBS containing 50% glycerol, 0.5% BSA and 0.02% sodium azide.
Source :	Polyclonal, Rabbit,IgG
Dilution :	WB 1:500-2000;IHC 1:50-300; IP 1:50-200 ELISA 2000-20000
Purification :	The antibody was affinity-purified from rabbit antiserum by affinity-chromatography using epitope-specific immunogen.
Concentration :	1 mg/ml

Storage Stability :	<u>-15°C to -25°C/1 year(Do not lower than -25°C)</u>
Observed Band :	<u>44kD</u>
Cell Pathway :	<u>mTOR</u>
Background :	<u>This gene encodes a member of the GTR/RAG GTP-binding protein family. The encoded protein is a monomeric guanine nucleotide-binding protein which forms a heterodimer with RRAGA and RRAGB and is primarily localized to the cytoplasm. The encoded protein promotes intracellular localization of the mTOR complex. Alternative splicing results in multiple transcript variants. [provided by RefSeq, Dec 2012],</u>
Function :	<u>function:Has guanine nucleotide-binding activity but weak intrinsic GTPase activity.,similarity:Belongs to the GTR/RAG GTP-binding protein family.,subcellular location:Predominantly cytoplasmic. May shuttle between the cytoplasm and nucleus, depending on the bound nucleotide state of associated RRAGA.,subunit:Forms a heterodimer with RRAGA in a sequence-independent manner. Binds GTP. Interacts with NOL8 and RRAGB.,</u>
Subcellular Location :	<u>Cytoplasm . Nucleus . Lysosome . Predominantly cytoplasmic. May shuttle between the cytoplasm and nucleus, depending on the bound nucleotide state of associated RRAGA (PubMed:11073942) . .</u>
Expression :	<u>Lymph,Ovary,</u>
Tag :	<u>orthogonal,hot,ip</u>
Sort :	<u>13800</u>
No4 :	<u>1</u>
Host :	<u>Rabbit</u>
Modifications :	<u>Unmodified</u>

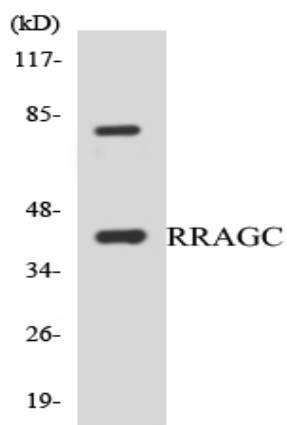
Products Images



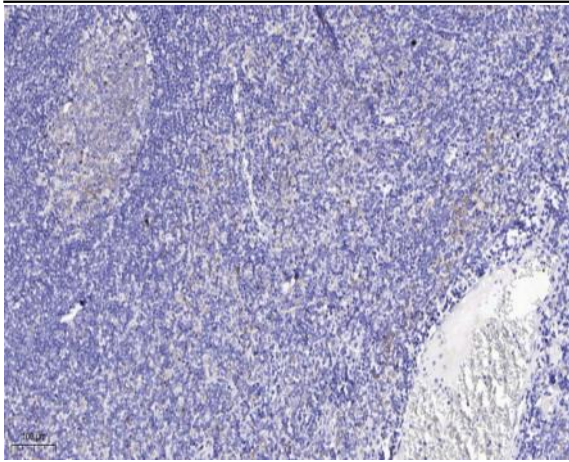
Western Blot analysis of various cells using Rag C Polyclonal Antibody



Western blot analysis of lysates from HepG2, A549, and LOVO cells, using RRAGC Antibody. The lane on the right is blocked with the synthesized peptide.



Western blot analysis of the lysates from HepG2 cells using RRAGC antibody.



Immunohistochemical analysis of paraffin-embedded human tonsil. 1, Antibody was diluted at 1:200(4° overnight). 2, Tris-EDTA,pH9.0 was used for antigen retrieval. 3,Secondary antibody was diluted at 1:200(room temperature, 45min).