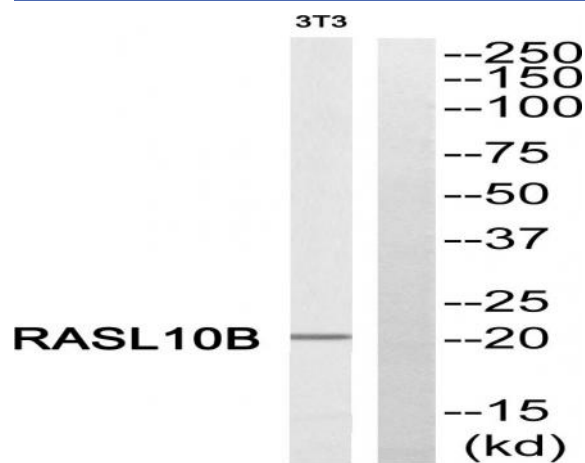


RASL10B Polyclonal Antibody

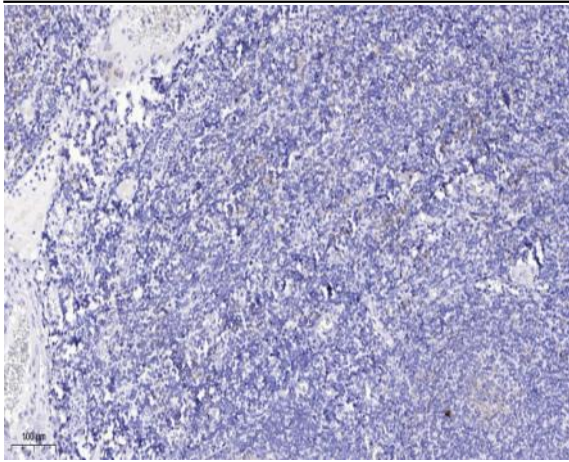
Catalog No :	YT4010
Reactivity :	Human;Mouse
Applications :	WB;IHC
Target :	RASL10B
Gene Name :	RASL10B
Protein Name :	Ras-like protein family member 10B
Human Gene Id :	91608
Human Swiss Prot No :	Q96S79
Mouse Gene Id :	276952
Mouse Swiss Prot No :	Q5SSG5
Immunogen :	Synthesized peptide derived from RASL10B . at AA range: 80-160
Specificity :	RASL10B Polyclonal Antibody detects endogenous levels of RASL10B protein.
Formulation :	Liquid in PBS containing 50% glycerol, 0.5% BSA and 0.02% sodium azide.
Source :	Polyclonal, Rabbit,IgG
Dilution :	WB 1:500-2000;IHC 1:50-300
Purification :	The antibody was affinity-purified from rabbit antiserum by affinity-chromatography using epitope-specific immunogen.
Concentration :	1 mg/ml
Storage Stability :	-15°C to -25°C/1 year(Do not lower than -25°C)

Observed Band :	22kD
Background :	similarity:Belongs to the small GTPase superfamily. Ras family.,
Function :	similarity:Belongs to the small GTPase superfamily. Ras family.,
Subcellular Location :	Cell membrane ; Lipid-anchor ; Cytoplasmic side .
Expression :	Expressed at high levels in skeletal muscle and, at much lower levels, in heart, brain and pancreas.
Sort :	13827
No4 :	1
Host :	Rabbit
Modifications :	Unmodified

Products Images



Western blot analysis of RASL10B Antibody. The lane on the right is blocked with the RASL10B peptide.



Immunohistochemical analysis of paraffin-embedded human tonsil. 1, Antibody was diluted at 1:200(4 ° overnight). 2, Tris-EDTA,pH9.0 was used for antigen retrieval. 3,Secondary antibody was diluted at 1:200(room temperature, 45min).