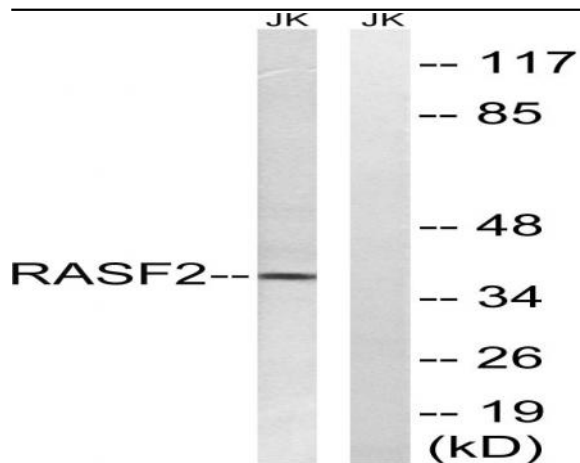


RASSF2 Polyclonal Antibody

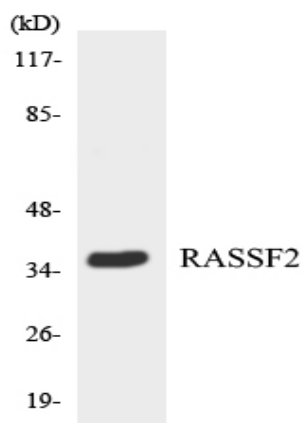
| | |
|------------------------------|----------------------------------------------------------------------------------------------------|
| Catalog No : | YT4011 |
| Reactivity : | Human;Mouse;Rat |
| Applications : | WB;IHC |
| Target : | RASSF2 |
| Fields : | >>Hippo signaling pathway - multiple species |
| Gene Name : | RASSF2 |
| Protein Name : | Ras association domain-containing protein 2 |
| Human Gene Id : | 9770 |
| Human Swiss Prot No : | P50749 |
| Mouse Gene Id : | 215653 |
| Mouse Swiss Prot No : | Q8BMS9 |
| Rat Gene Id : | 311437 |
| Rat Swiss Prot No : | Q3B7D5 |
| Immunogen : | The antiserum was produced against synthesized peptide derived from human RASSF2. AA range:109-158 |
| Specificity : | RASSF2 Polyclonal Antibody detects endogenous levels of RASSF2 protein. |
| Formulation : | Liquid in PBS containing 50% glycerol, 0.5% BSA and 0.02% sodium azide. |
| Source : | Polyclonal, Rabbit,IgG |
| Dilution : | WB 1:500-2000;IHC 1:50-300 |

| | |
|-------------------------------|-----------------------------------------------------------------------------------------------------------------------------------------------------------------------------------------------------------------------------------------------------------------------------------------------------------------------------------------------------------------------------------------------------------------------------------------------------|
| Purification : | The antibody was affinity-purified from rabbit antiserum by affinity-chromatography using epitope-specific immunogen. |
| Concentration : | 1 mg/ml |
| Storage Stability : | -15°C to -25°C/1 year(Do not lower than -25°C) |
| Observed Band : | 36kD |
| Background : | This gene encodes a protein that contains a Ras association domain. Similar to its cattle and sheep counterparts, this gene is located near the prion gene. Two alternatively spliced transcripts encoding the same isoform have been reported. [provided by RefSeq, Jul 2008], |
| Function : | function:Potential tumor suppressor. Acts as a KRAS-specific effector protein. May promote apoptosis and cell cycle arrest.,similarity:Contains 1 Ras-associating domain.,similarity:Contains 1 SARAH domain.,subunit:Interacts directly with activated KRAS in a GTP-dependent manner.,tissue specificity:Widely expressed with highest levels in brain, placenta, peripheral blood and lung. Frequently down-regulated in lung tumor cell lines., |
| Subcellular Location : | Nucleus. Cytoplasm. Chromosome, centromere, kinetochore . Translocates to the cytoplasm in the presence of STK3/MST2 AND STK4/MST1. |
| Expression : | Widely expressed with highest levels in brain, placenta, peripheral blood and lung. Frequently down-regulated in lung tumor cell lines. |
| Sort : | 13829 |
| No4 : | 1 |
| Host : | Rabbit |
| Modifications : | Unmodified |

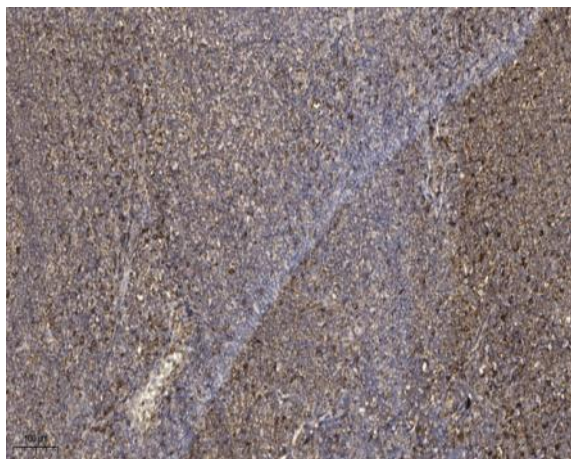
Products Images



Western blot analysis of lysates from Jurkat cells, using RASSF2 Antibody. The lane on the right is blocked with the synthesized peptide.



Western blot analysis of the lysates from HepG2 cells using RASSF2 antibody.



Immunohistochemical analysis of paraffin-embedded human tonsil. 1, Antibody was diluted at 1:200(4° overnight). 2, Tris-EDTA,pH9.0 was used for antigen retrieval. 3,Secondary antibody was diluted at 1:200(room temperature, 45min).