

## RASSF6 Polyclonal Antibody

<b>Catalog No :</b>	YT4013
<b>Reactivity :</b>	Human;Rat;Mouse;
<b>Applications :</b>	WB;ELISA
<b>Target :</b>	RASSF6
<b>Fields :</b>	>>Hippo signaling pathway;>>Hippo signaling pathway - multiple species
<b>Gene Name :</b>	RASSF6
<b>Protein Name :</b>	Ras association domain-containing protein 6
<b>Human Gene Id :</b>	166824
<b>Human Swiss Prot No :</b>	Q6ZTQ3
<b>Mouse Swiss Prot No :</b>	Q80UQ2
<b>Immunogen :</b>	The antiserum was produced against synthesized peptide derived from human RASSF6. AA range:129-178
<b>Specificity :</b>	RASSF6 Polyclonal Antibody detects endogenous levels of RASSF6 protein.
<b>Formulation :</b>	Liquid in PBS containing 50% glycerol, 0.5% BSA and 0.02% sodium azide.
<b>Source :</b>	Polyclonal, Rabbit,IgG
<b>Dilution :</b>	WB 1:500 - 1:2000. ELISA: 1:10000. Not yet tested in other applications.
<b>Purification :</b>	The antibody was affinity-purified from rabbit antiserum by affinity-chromatography using epitope-specific immunogen.
<b>Concentration :</b>	1 mg/ml
<b>Storage Stability :</b>	-15°C to -25°C/1 year(Do not lower than -25°C)

**Observed Band :** 45kD

**Background :** This gene encodes a member of the Ras-association domain family (RASSF). Members of this family form the core of a highly conserved tumor suppressor network, the Salvador-Warts-Hippo (SWH) pathway. The protein encoded by this gene is a Ras effector protein that induces apoptosis. A genomic region containing this gene has been linked to susceptibility to viral bronchiolitis. Alternative splicing results in multiple transcript variants and protein isoforms. [provided by RefSeq, Jul 2012],

**Function :** function:May act as a Ras effector protein.,sequence caution:Translated as Gln.,similarity:Contains 1 Ras-associating domain.,similarity:Contains 1 SARAH domain.,

**Expression :** Highest expression in thymus, kidney and placenta. Also detected in colon, small intestine and lung. Tends to be down-regulated in 30-60% of tumors derived from breast, colon, kidney liver, rectum, pancreas, stomach and the thyroid gland compared to the normal counterpart.

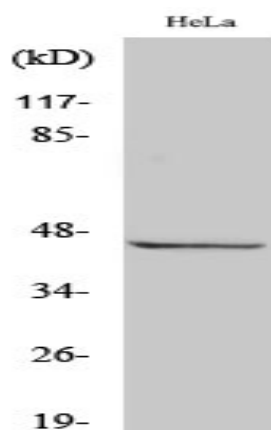
**Sort :** 13831

**No4 :** 1

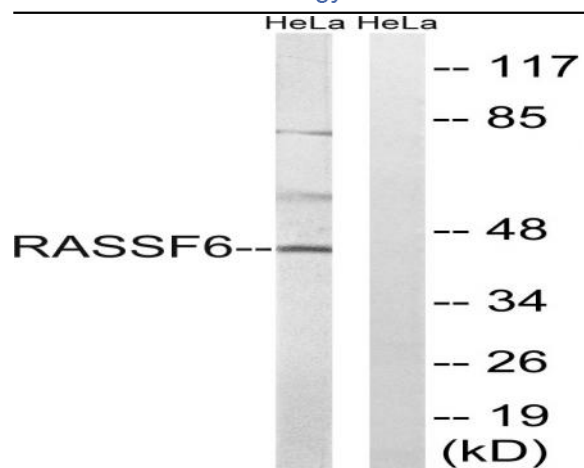
**Host :** Rabbit

**Modifications :** Unmodified

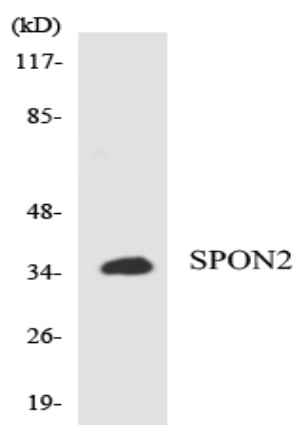
## Products Images



Western Blot analysis of various cells using RASSF6 Polyclonal Antibody



Western blot analysis of lysates from HeLa cells, using RASSF6 Antibody. The lane on the right is blocked with the synthesized peptide.



Western blot analysis of the lysates from K562 cells using RASSF6 antibody.