

RBQ-3 Polyclonal Antibody

Catalog No :	YT4029
Reactivity :	Human;Mouse;Rat
Applications :	WB;IHC
Target :	RBQ-3
Fields :	>>Cushing syndrome
Gene Name :	RBBP5
Protein Name :	Retinoblastoma-binding protein 5
Human Gene Id :	5929
Human Swiss Prot No :	Q15291
Mouse Gene Id :	213464
Mouse Swiss Prot No :	Q8BX09
Immunogen :	Synthesized peptide derived from RBQ-3 . at AA range: 190-270
Specificity :	RBQ-3 Polyclonal Antibody detects endogenous levels of RBQ-3 protein.
Formulation :	Liquid in PBS containing 50% glycerol, 0.5% BSA and 0.02% sodium azide.
Source :	Polyclonal, Rabbit,IgG
Dilution :	WB 1:500-2000;IHC 1:50-300
Purification :	The antibody was affinity-purified from rabbit antiserum by affinity-chromatography using epitope-specific immunogen.
Concentration :	1 mg/ml

Storage Stability : -15°C to -25°C/1 year(Do not lower than -25°C)

Observed Band : 59kD

Background : This gene encodes a ubiquitously expressed nuclear protein which belongs to a highly conserved subfamily of WD-repeat proteins. The encoded protein binds directly to retinoblastoma protein, which regulates cell proliferation. It interacts preferentially with the underphosphorylated retinoblastoma protein via the E1A-binding pocket B. Three alternatively spliced transcript variants that encode different protein isoforms have been described for this gene. [provided by RefSeq, Jul 2010],

Function : function: Binds preferentially to underphosphorylated retinoblastoma protein.,PTM: Phosphorylated upon DNA damage, probably by ATM or ATR.,similarity: Contains 6 WD repeats.,subunit: Component of the SET1 complex, at least composed of the catalytic subunit (SETD1A or SETD1B), WDR5, WDR82, RBBP5, ASH2/ASH2L and CXXC1/CFP1. Component of MLL-containing complexes (named MLL, ASCOM, MLL2/MLL3 or MLL3/MLL4 complex): at least composed ASH2L, RBBP5, DPY30, WDR5, one or several histone methyltransferases (MLL, MLL2, MLL3 and/or MLL4), and the facultative components MEN1, HCFC1, HCFC2, NCOA6, KDM6A, PAXIP1/PTIP and C16orf53/PA1.,tissue specificity: Ubiquitously expressed.,

Subcellular Location : Nucleus .

Expression : Ubiquitously expressed.

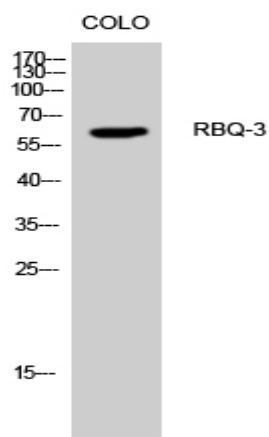
Sort : 14058

No4 : 1

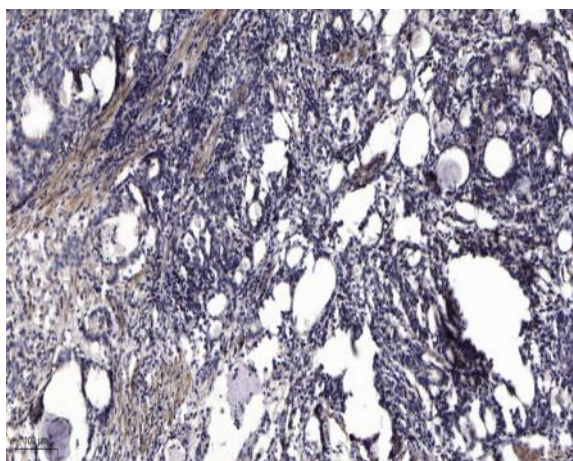
Host : Rabbit

Modifications : Unmodified

Products Images



Western Blot analysis of CoLo cells using RBQ-3 Polyclonal Antibody cells nucleus extracted by Minute™ Cytoplasmic and Nuclear Fractionation kit (SC-003, Inventbiotech, MN, USA).



Immunohistochemical analysis of paraffin-embedded human Gastric adenocarcinoma. 1, Antibody was diluted at 1:200 (4° overnight). 2, Tris-EDTA, pH 9.0 was used for antigen retrieval. 3, Secondary antibody was diluted at 1:200 (room temperature, 45min).