

## RECK Polyclonal Antibody

|                              |                                                                                                                       |
|------------------------------|-----------------------------------------------------------------------------------------------------------------------|
| <b>Catalog No :</b>          | YT4036                                                                                                                |
| <b>Reactivity :</b>          | Human;Mouse                                                                                                           |
| <b>Applications :</b>        | IHC;IF;WB;ELISA                                                                                                       |
| <b>Target :</b>              | RECK                                                                                                                  |
| <b>Fields :</b>              | >>MicroRNAs in cancer                                                                                                 |
| <b>Gene Name :</b>           | RECK                                                                                                                  |
| <b>Protein Name :</b>        | Reversion-inducing cysteine-rich protein with Kazal motifs                                                            |
| <b>Human Gene Id :</b>       | 8434                                                                                                                  |
| <b>Human Swiss Prot No :</b> | O95980                                                                                                                |
| <b>Mouse Gene Id :</b>       | 53614                                                                                                                 |
| <b>Mouse Swiss Prot No :</b> | Q9Z0J1                                                                                                                |
| <b>Immunogen :</b>           | The antiserum was produced against synthesized peptide derived from human RECK. AA range:21-70                        |
| <b>Specificity :</b>         | RECK Polyclonal Antibody detects endogenous levels of RECK protein.                                                   |
| <b>Formulation :</b>         | Liquid in PBS containing 50% glycerol, 0.5% BSA and 0.02% sodium azide.                                               |
| <b>Source :</b>              | Polyclonal, Rabbit,IgG                                                                                                |
| <b>Dilution :</b>            | WB 1:500-2000 IHC 1:100 - 1:300. IF 1:200 - 1:1000. ELISA: 1:20000. Not yet tested in other applications.             |
| <b>Purification :</b>        | The antibody was affinity-purified from rabbit antiserum by affinity-chromatography using epitope-specific immunogen. |
| <b>Concentration :</b>       | 1 mg/ml                                                                                                               |

**Storage Stability :** -15°C to -25°C/1 year(Do not lower than -25°C)

**Observed Band :** 110kD

**Background :** The protein encoded by this gene is a cysteine-rich, extracellular protein with protease inhibitor-like domains whose expression is suppressed strongly in many tumors and cells transformed by various kinds of oncogenes. In normal cells, this membrane-anchored glycoprotein may serve as a negative regulator for matrix metalloproteinase-9, a key enzyme involved in tumor invasion and metastasis. Several transcript variants encoding different isoforms have been found for this gene. [provided by RefSeq, Oct 2015],

**Function :** function:Negatively regulates matrix metalloproteinase-9 (MMP-9) by suppressing MMP-9 secretion and by direct inhibition of its enzymatic activity. RECK down-regulation by oncogenic signals may facilitate tumor invasion and metastasis. Appears to also regulate MMP-2 and MT1-MMP, which are involved in cancer progression.,PTM:N-glycosylated.,similarity:Contains 3 Kazal-like domains.,subunit:Interacts with MMP-9.,tissue specificity:Expressed in various tissues and untransformed cells. It is undetectable in tumor-derived cell lines and oncogenically transformed cells.,

**Subcellular Location :** Cell membrane ; Lipid-anchor, GPI-anchor .

**Expression :** Expressed in various tissues and untransformed cells (PubMed:9789069). It is undetectable in tumor-derived cell lines and oncogenically transformed cells (PubMed:9789069).

**Tag :** hot

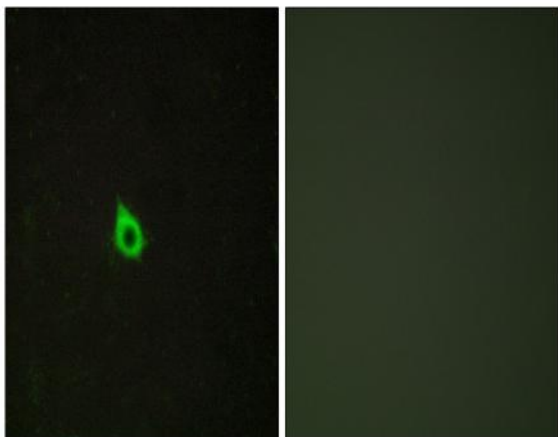
**Sort :** 14071

**No4 :** 1

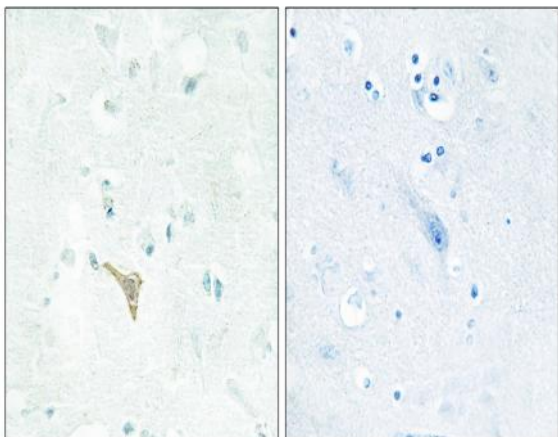
**Host :** Rabbit

**Modifications :** Unmodified

## Products Images



Immunofluorescence analysis of HepG2 cells, using RECK Antibody. The picture on the right is blocked with the synthesized peptide.



Immunohistochemistry analysis of paraffin-embedded human brain tissue, using RECK Antibody. The picture on the right is blocked with the synthesized peptide.