

RERG Polyclonal Antibody

Catalog No :	YT4055
Reactivity :	Human;Mouse
Applications :	IHC;IF;ELISA
Target :	RERG
Gene Name :	RERG
Protein Name :	Ras-related and estrogen-regulated growth inhibitor
Human Gene Id :	85004
Human Swiss Prot No :	Q96A58
Mouse Gene Id :	232441
Mouse Swiss Prot No :	Q8R367
Immunogen :	Synthesized peptide derived from RERG . at AA range: 70-150
Specificity :	RERG Polyclonal Antibody detects endogenous levels of RERG protein.
Formulation :	Liquid in PBS containing 50% glycerol, 0.5% BSA and 0.02% sodium azide.
Source :	Polyclonal, Rabbit,IgG
Dilution :	IHC 1:100 - 1:300. ELISA: 1:5000.. IF 1:50-200
Purification :	The antibody was affinity-purified from rabbit antiserum by affinity-chromatography using epitope-specific immunogen.
Concentration :	1 mg/ml
Storage Stability :	-15°C to -25°C/1 year(Do not lower than -25°C)

Molecularweight : 23kD

Background : RERG, a member of the RAS superfamily of GTPases, inhibits cell proliferation and tumor formation (Finlin et al., 2001 [PubMed 11533059]).[supplied by OMIM, Mar 2009],

Function : disease:Loss of RERG expression may contribute to tumorigenesis in breast. RERG expression is decreased or lost in a significant proportion of primary breast tumors with poor clinical prognosis. High expression of RERG correlates with long relapse-free survival times.,function:Binds GDP/GTP and possesses intrinsic GTPase activity. Has higher affinity for GDP than for GTP. In cell lines overexpression leads to a reduction in the rate of proliferation, colony formation and in tumorigenic potential.,induction:Up-regulated by estradiol. Down-regulated by tamoxifen.,similarity:Belongs to the small GTPase superfamily. Ras family.,tissue specificity:Detected in heart, brain, placenta, lung, liver, skin, kidney and pancreas. Detected in estrogen receptor-positive breast-derived cell lines, but not in estrogen receptor-negative cell lines.,

Subcellular Location : Cytoplasm .

Expression : Detected in heart, brain, placenta, lung, liver, skin, kidney and pancreas. Detected in estrogen receptor-positive breast-derived cell lines, but not in estrogen receptor-negative cell lines. Expression is decreased or lost in a significant proportion of primary breast tumors with poor clinical prognosis.

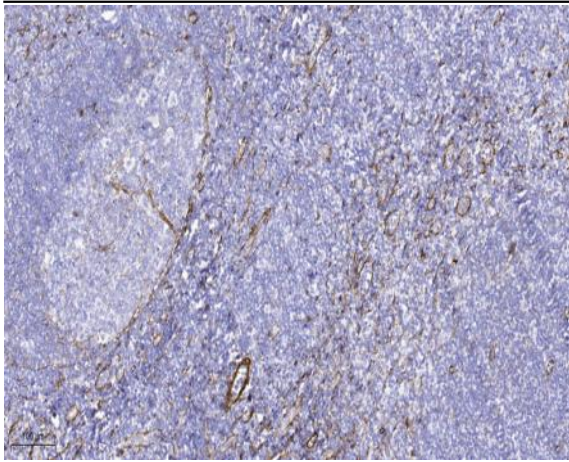
Sort : 14390

No4 : 1

Host : Rabbit

Modifications : Unmodified

Products Images



Immunohistochemical analysis of paraffin-embedded human tonsil. 1, Tris-EDTA, pH 9.0 was used for antigen retrieval. 2 Antibody was diluted at 1:200 (4° overnight). 3, Secondary antibody was diluted at 1:200 (room temperature, 45 min).