

RGPD2/3/4/6/8 Polyclonal Antibody

Catalog No :	YT4068
Reactivity :	Human
Applications :	WB;ELISA;IHC
Target :	RGPD2/3/4/6/8
Gene Name :	RGPD8
Protein Name :	RANBP2-like and GRIP domain-containing protein 8
Human Gene Id :	729540/84220/729857
Human Swiss Prot No :	O14715/Q53T03/Q7Z3J3/A6NKT7/P0C839
Immunogen :	The antiserum was produced against synthesized peptide derived from human RGPD2/3/4/6/8. AA range:577-626
Specificity :	RGPD2/3/4/6/8 Polyclonal Antibody detects endogenous levels of RGPD2/3/4/6/8 protein.
Formulation :	Liquid in PBS containing 50% glycerol, 0.5% BSA and 0.02% sodium azide.
Source :	Polyclonal, Rabbit,IgG
Dilution :	WB 1:500-2000;IHC 1:50-300; ELISA 2000-20000
Purification :	The antibody was affinity-purified from rabbit antiserum by affinity-chromatography using epitope-specific immunogen.
Concentration :	1 mg/ml
Storage Stability :	-15°C to -25°C/1 year(Do not lower than -25°C)
Observed Band :	110kD
Background :	caution:The sequence shown here is derived from an Ensembl automatic

analysis pipeline and should be considered as preliminary data.,miscellaneous:One of the 8 copies of RANBP2 clustered close to the centromere of chromosome 2.,miscellaneous:One of the 8 copies of RANBP2 clustered close to the chromosome 2 centromere.,similarity:Contains 1 GRIP domain.,similarity:Contains 2 RanBD1 domains.,similarity:Contains 2 TPR repeats.,similarity:Contains 3 TPR repeats.,tissue specificity:Expressed in testis.,

Function :

caution:The sequence shown here is derived from an Ensembl automatic analysis pipeline and should be considered as preliminary data.,miscellaneous:One of the 8 copies of RANBP2 clustered close to the centromere of chromosome 2.,miscellaneous:One of the 8 copies of RANBP2 clustered close to the chromosome 2 centromere.,similarity:Contains 1 GRIP domain.,similarity:Contains 2 RanBD1 domains.,similarity:Contains 2 TPR repeats.,similarity:Contains 3 TPR repeats.,tissue specificity:Expressed in testis.,

Subcellular Location :

intracellular,nuclear pore,

Expression :

Brain,Epithelium,Retina,Testis,

Sort :

14426

No4 :

1

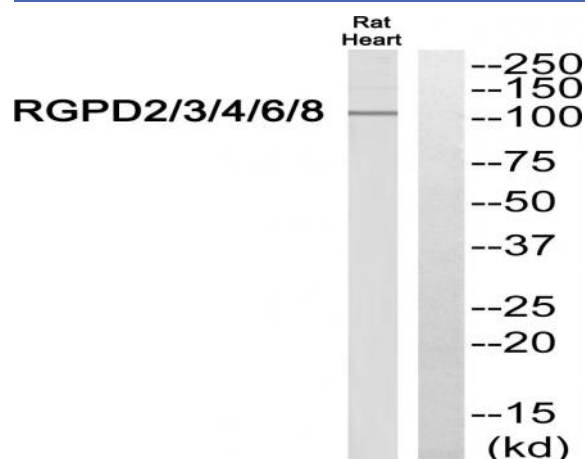
Host :

Rabbit

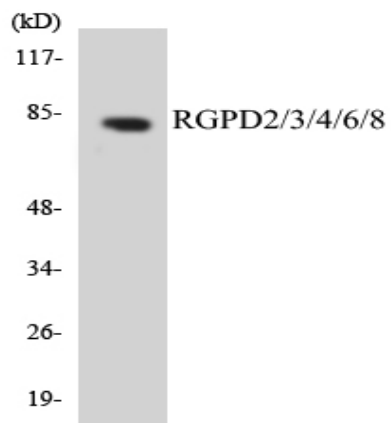
Modifications :

Unmodified

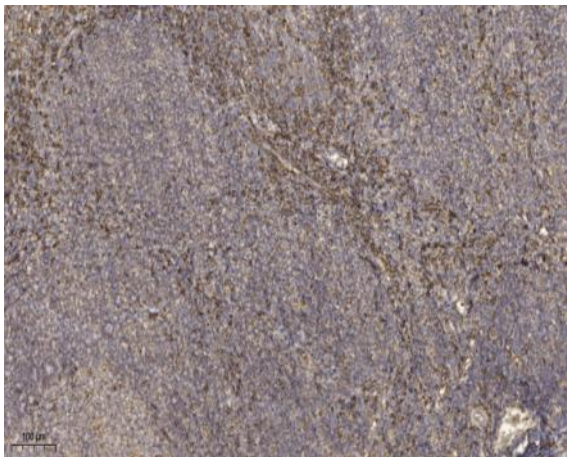
Products Images



Western blot analysis of RGP2/3/4/6/8 Antibody. The lane on the right is blocked with the RGP2/3/4/6/8 peptide.



Western blot analysis of the lysates from Jurkat cells using RGD2/3/4/6/8 antibody.



Immunohistochemical analysis of paraffin-embedded human tonsil. 1, Antibody was diluted at 1:200(4° overnight). 2, Tris-EDTA,pH9.0 was used for antigen retrieval. 3,Secondary antibody was diluted at 1:200(room temperature, 45min).