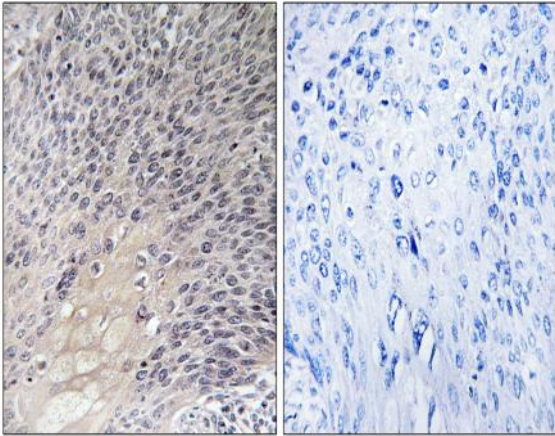


Rho GDI α Polyclonal Antibody

Catalog No :	YT4081
Reactivity :	Human;Mouse;Rat
Applications :	IHC;IF;ELISA
Target :	Rho GDI α
Fields :	>>Neurotrophin signaling pathway;>>Vasopressin-regulated water reabsorption
Gene Name :	ARHGDI α
Protein Name :	Rho GDP-dissociation inhibitor 1
Human Gene Id :	396
Human Swiss Prot No :	P52565
Mouse Gene Id :	192662
Mouse Swiss Prot No :	Q99PT1
Rat Gene Id :	360678
Rat Swiss Prot No :	Q5XI73
Immunogen :	The antiserum was produced against synthesized peptide derived from human ARHGDI α . AA range:140-189
Specificity :	Rho GDI α Polyclonal Antibody detects endogenous levels of Rho GDI α protein.
Formulation :	Liquid in PBS containing 50% glycerol, 0.5% BSA and 0.02% sodium azide.
Source :	Polyclonal, Rabbit,IgG
Dilution :	IHC 1:100 - 1:300. ELISA: 1:10000.. IF 1:50-200

Purification :	The antibody was affinity-purified from rabbit antiserum by affinity-chromatography using epitope-specific immunogen.
Concentration :	1 mg/ml
Storage Stability :	-15°C to -25°C/1 year(Do not lower than -25°C)
Molecularweight :	23kD
Cell Pathway :	Neurotrophin;
Background :	This gene encodes a protein that plays a key role in the regulation of signaling through Rho GTPases. The encoded protein inhibits the disassociation of Rho family members from GDP (guanine diphosphate), thereby maintaining these factors in an inactive state. Activity of this protein is important in a variety of cellular processes, and expression of this gene may be altered in tumors. Mutations in this gene have been found in individuals with nephrotic syndrome, type 8. Alternate splicing results in multiple transcript variants. [provided by RefSeq, Jul 2014],
Function :	function:Regulates the GDP/GTP exchange reaction of the Rho proteins by inhibiting the dissociation of GDP from them, and the subsequent binding of GTP to them.,similarity:Belongs to the Rho GDI family.,subunit:Monomer.,
Subcellular Location :	Cytoplasm .
Expression :	Brain,Cajal-Retzius cell,Colon,Epithelium,Fetal brain cortex,Lung,M
Sort :	14447
No4 :	1
Host :	Rabbit
Modifications :	Unmodified

Products Images



Immunohistochemistry analysis of paraffin-embedded human cervix carcinoma tissue, using ARHGDI2 Antibody. The picture on the right is blocked with the synthesized peptide.