

RhoBTB1/2 Polyclonal Antibody

Catalog No :	YT4084
Reactivity :	Human;Mouse
Applications :	WB;IHC;IF;ELISA
Target :	RhoBTB1/2
Fields :	>>Ubiquitin mediated proteolysis
Gene Name :	RHOBTB1/RHOBTB2
Protein Name :	Rho-related BTB domain-containing protein 1/2
Human Gene Id :	23221/9886
Human Swiss Prot No :	O94844/Q9BYZ6
Mouse Gene Id :	69288/246710
Immunogen :	The antiserum was produced against synthesized peptide derived from human RHBT2. AA range:61-110
Specificity :	RhoBTB1/2 Polyclonal Antibody detects endogenous levels of RhoBTB1/2 protein.
Formulation :	Liquid in PBS containing 50% glycerol, 0.5% BSA and 0.02% sodium azide.
Source :	Polyclonal, Rabbit,IgG
Dilution :	WB 1:500 - 1:2000. IHC 1:100 - 1:300. IF 1:200 - 1:1000. ELISA: 1:5000. Not yet tested in other applications.
Purification :	The antibody was affinity-purified from rabbit antiserum by affinity-chromatography using epitope-specific immunogen.
Concentration :	1 mg/ml

Storage Stability : -15°C to -25°C/1 year(Do not lower than -25°C)

Observed Band : 83kD

Background : The protein encoded by this gene belongs to the Rho family of the small GTPase superfamily. It contains a GTPase domain, a proline-rich region, a tandem of 2 BTB (broad complex, tramtrack, and bric-a-brac) domains, and a conserved C-terminal region. The protein plays a role in small GTPase-mediated signal transduction and the organization of the actin filament system. Alternate splicing results in multiple transcript variants. [provided by RefSeq, Dec 2008],

Function : similarity:Belongs to the small GTPase superfamily. Rho family.,similarity:Contains 2 BTB (POZ) domains.,tissue specificity:Ubiquitous, with highest levels in skeletal muscle, placenta, testis, stomach, and kidney, followed by uterus and adrenal gland. Expressed in a variety of fetal tissues.,

Subcellular Location : intracellular,cytosol,plasma membrane,

Expression : Ubiquitous, with highest levels in skeletal muscle, placenta, testis, stomach, and kidney, followed by uterus and adrenal gland. Expressed in a variety of fetal tissues.

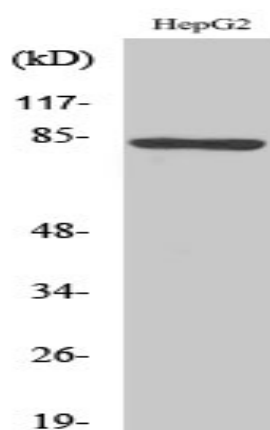
Sort : 14451

No4 : 1

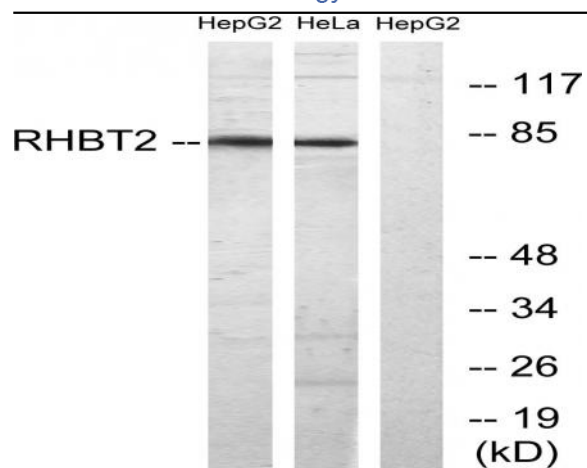
Host : Rabbit

Modifications : Unmodified

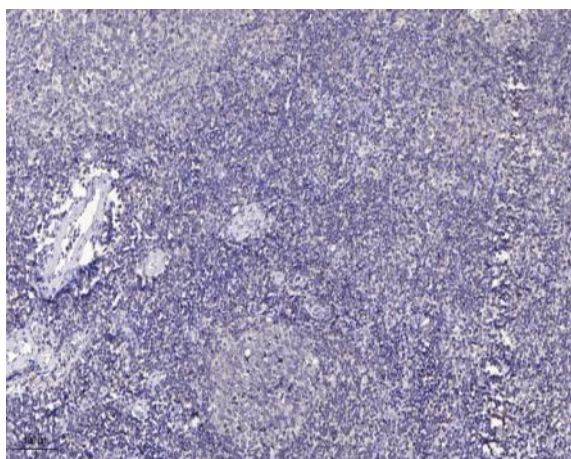
Products Images



Western Blot analysis of various cells using RhoBTB1/2 Polyclonal Antibody



Western blot analysis of lysates from HepG2 and HeLa cells, using RHBT2 Antibody. The lane on the right is blocked with the synthesized peptide.



Immunohistochemical analysis of paraffin-embedded human tonsil. 1, Antibody was diluted at 1:200(4° overnight). 2, Tris-EDTA,pH9.0 was used for antigen retrieval. 3,Secondary antibody was diluted at 1:200(room temperature, 30min).