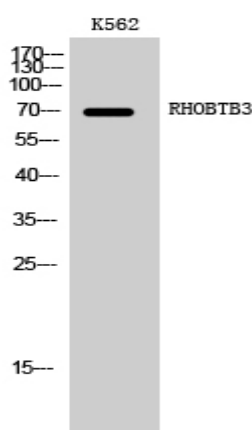


RHOBTB3 Polyclonal Antibody

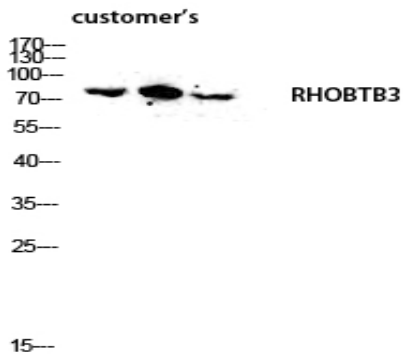
Catalog No :	YT4085
Reactivity :	Human;Mouse
Applications :	WB;IHC;IF;ELISA
Target :	RHOBTB3
Gene Name :	RHOBTB3
Protein Name :	Rho-related BTB domain-containing protein 3
Human Gene Id :	22836
Human Swiss Prot No :	O94955
Mouse Gene Id :	73296
Mouse Swiss Prot No :	Q9CTN4
Immunogen :	The antiserum was produced against synthesized peptide derived from human RHOBTB3. AA range:335-384
Specificity :	RHOBTB3 Polyclonal Antibody detects endogenous levels of RHOBTB3 protein.
Formulation :	Liquid in PBS containing 50% glycerol, 0.5% BSA and 0.02% sodium azide.
Source :	Polyclonal, Rabbit,IgG
Dilution :	WB 1:500 - 1:2000.IHC:1:50-300 ELISA: 1:20000.. IF 1:50-200
Purification :	The antibody was affinity-purified from rabbit antiserum by affinity-chromatography using epitope-specific immunogen.
Concentration :	1 mg/ml
Storage Stability :	-15 °C to -25 °C/1 year(Do not lower than -25 °C)

Observed Band :	70kD
Background :	RHOBTB3 is a member of the evolutionarily conserved RHOBTB subfamily of Rho GTPases. For background information on RHOBTBs, see RHOBTB1 (MIM 607351).[supplied by OMIM, Apr 2004],
Function :	similarity:Contains 2 BTB (POZ) domains.,tissue specificity:Ubiquitous. Highly expressed in neural and cardiac tissues, pancreas, placenta and testis.,
Subcellular Location :	Golgi apparatus .
Expression :	Ubiquitous. Highly expressed in neural and cardiac tissues, pancreas, placenta and testis.
Sort :	14452
No4 :	1
Host :	Rabbit
Modifications :	Unmodified

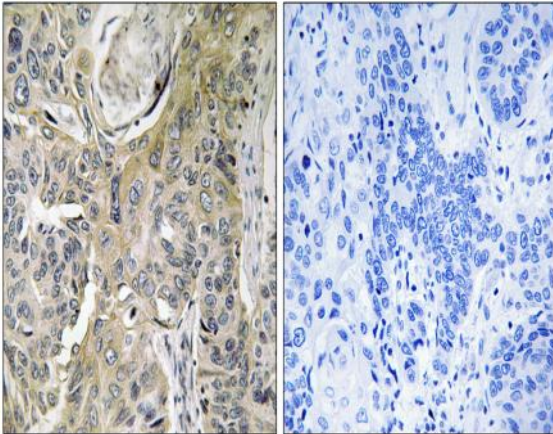
Products Images



Western Blot analysis of K562 cells using RHOBTB3 Polyclonal Antibody diluted at 1:2000



Western blot analysis of customer's lysate using RHOBTB3 antibody. Antibody was diluted at 1:2000



Immunohistochemistry analysis of paraffin-embedded human lung carcinoma tissue, using RHOBTB3 Antibody. The picture on the right is blocked with the synthesized peptide.