

RN-tre Polyclonal Antibody

| | |
|------------------------------|---|
| Catalog No : | YT4158 |
| Reactivity : | Human;Mouse |
| Applications : | IHC;IF;ELISA |
| Target : | RN-tre |
| Gene Name : | USP6NL |
| Protein Name : | USP6 N-terminal-like protein |
| Human Gene Id : | 9712 |
| Human Swiss Prot No : | Q92738 |
| Mouse Swiss Prot No : | Q80XC3 |
| Immunogen : | The antiserum was produced against synthesized peptide derived from human USP6NL. AA range:451-500 |
| Specificity : | RN-tre Polyclonal Antibody detects endogenous levels of RN-tre protein. |
| Formulation : | Liquid in PBS containing 50% glycerol, 0.5% BSA and 0.02% sodium azide. |
| Source : | Polyclonal, Rabbit,IgG |
| Dilution : | IHC 1:100 - 1:300. ELISA: 1:10000.. IF 1:50-200 |
| Purification : | The antibody was affinity-purified from rabbit antiserum by affinity-chromatography using epitope-specific immunogen. |
| Concentration : | 1 mg/ml |
| Storage Stability : | -15°C to -25°C/1 year(Do not lower than -25°C) |
| Molecularweight : | 94kD |

Background : function:Acts as a GTPase-activating protein for RAB5A. Involved in receptor trafficking. In complex with EPS8 inhibits internalization of EGFR.,PTM:Phosphorylated upon DNA damage, probably by ATM or ATR.,similarity:Contains 1 Rab-GAP TBC domain.,subunit:Interacts with EPS8.,tissue specificity:Widely expressed.,

Function : function:Acts as a GTPase-activating protein for RAB5A. Involved in receptor trafficking. In complex with EPS8 inhibits internalization of EGFR.,PTM:Phosphorylated upon DNA damage, probably by ATM or ATR.,similarity:Contains 1 Rab-GAP TBC domain.,subunit:Interacts with EPS8.,tissue specificity:Widely expressed.,

Subcellular Location : Golgi apparatus. Cytoplasmic vesicle.

Expression : Widely expressed.

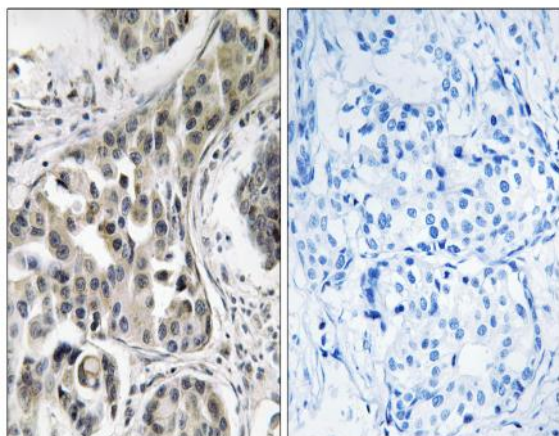
Sort : 14565

No4 : 1

Host : Rabbit

Modifications : Unmodified

Products Images



Immunohistochemistry analysis of paraffin-embedded human breast carcinoma, using USP6NL Antibody. The picture on the right is blocked with the synthesized peptide.