

ROR α Polyclonal Antibody

Catalog No :	YT4166
Reactivity :	Human;Monkey
Applications :	WB;IHC;IF;ELISA
Target :	ROR α
Fields :	>>Th17 cell differentiation;>>Circadian rhythm;>>Spinocerebellar ataxia;>>Inflammatory bowel disease
Gene Name :	RORA
Protein Name :	Nuclear receptor ROR-alpha
Human Gene Id :	6095
Human Swiss Prot No :	P35398
Mouse Swiss Prot No :	P51448
Immunogen :	The antiserum was produced against synthesized peptide derived from human RORA. AA range:6-55
Specificity :	ROR α Polyclonal Antibody detects endogenous levels of ROR α protein.
Formulation :	Liquid in PBS containing 50% glycerol, 0.5% BSA and 0.02% sodium azide.
Source :	Polyclonal, Rabbit,IgG
Dilution :	WB 1:500 - 1:2000. IHC 1:100 - 1:300. IF 1:200 - 1:1000. ELISA: 1:40000. Not yet tested in other applications.
Purification :	The antibody was affinity-purified from rabbit antiserum by affinity-chromatography using epitope-specific immunogen.
Concentration :	1 mg/ml

Storage Stability : -15°C to -25°C/1 year(Do not lower than -25°C)

Observed Band : 60kD

Background :

The protein encoded by this gene is a member of the NR1 subfamily of nuclear hormone receptors. It can bind as a monomer or as a homodimer to hormone response elements upstream of several genes to enhance the expression of those genes. The encoded protein has been shown to interact with NM23-2, a nucleoside diphosphate kinase involved in organogenesis and differentiation, as well as with NM23-1, the product of a tumor metastasis suppressor candidate gene. Also, it has been shown to aid in the transcriptional regulation of some genes involved in circadian rhythm. Four transcript variants encoding different isoforms have been described for this gene. [provided by RefSeq, Feb 2014],

Function :

function:Orphan nuclear receptor. Binds DNA as a monomer to hormone response elements (HRE) containing a single core motif half-site preceded by a short A-T-rich sequence. This isomer binds to the consensus sequence 5'-[AT][TA]A[AT][CGT]TAGGTCA-3'.,similarity:Belongs to the nuclear hormone receptor family.,similarity:Belongs to the nuclear hormone receptor family. NR1 subfamily.,similarity:Contains 1 nuclear receptor DNA-binding domain.,subunit:Monomer.,

Subcellular Location : Nucleus .

Expression :

Widely expressed in a number of tissues. Expressed in both regulatory T-cells (Treg) and effector T-cells (Teff) (PubMed:18354202, PubMed:7916608). Isoform 4: Highly expressed in the central nervous system, including in the cerebellum (PubMed:29656859).

Tag : hot

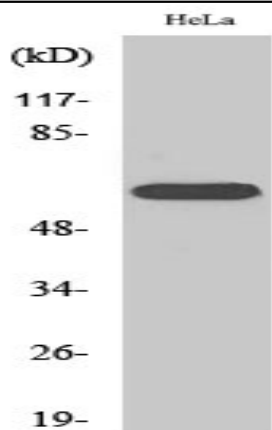
Sort : 14581

No4 : 1

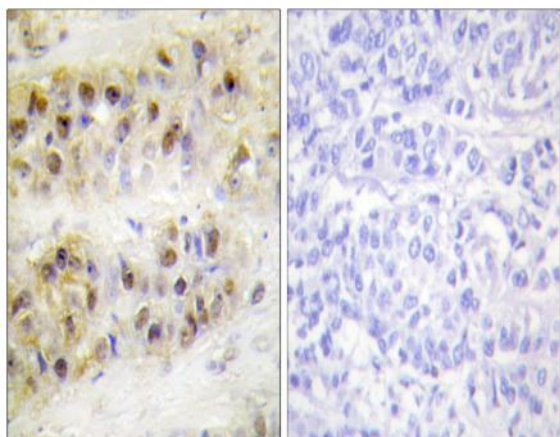
Host : Rabbit

Modifications : Unmodified

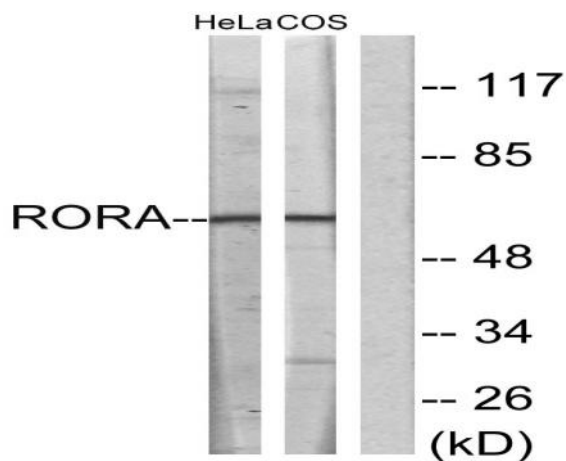
Products Images



Western Blot analysis of various cells using ROR α Polyclonal Antibody cells nucleus extracted by Minute TM Cytoplasmic and Nuclear Fractionation kit (SC-003, Inventbiotech, MN, USA).



Immunohistochemistry analysis of paraffin-embedded human breast carcinoma tissue, using ROR α Antibody. The picture on the right is blocked with the synthesized peptide.



Western blot analysis of lysates from HeLa and COS7 cells, using ROR α Antibody. The lane on the right is blocked with the synthesized peptide.