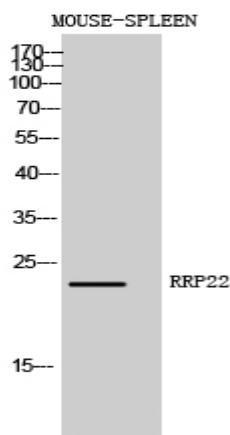


RRP22 Polyclonal Antibody

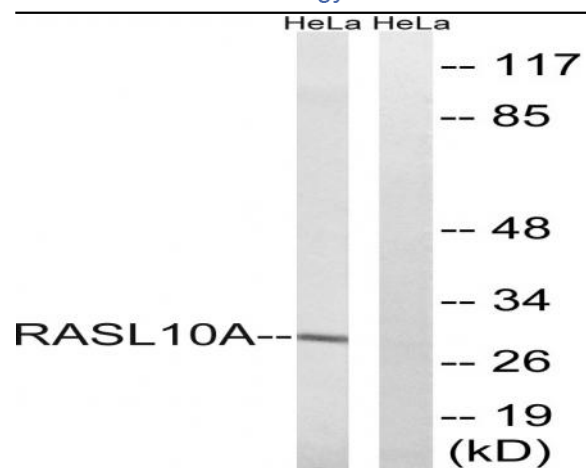
Catalog No :	YT4177
Reactivity :	Human;Mouse
Applications :	WB;ELISA
Target :	RRP22
Gene Name :	RASL10A
Protein Name :	Ras-like protein family member 10A
Human Gene Id :	10633
Human Swiss Prot No :	Q92737
Mouse Gene Id :	75668
Mouse Swiss Prot No :	Q8K5A4
Immunogen :	The antiserum was produced against synthesized peptide derived from human RASL10A. AA range:107-156
Specificity :	RRP22 Polyclonal Antibody detects endogenous levels of RRP22 protein.
Formulation :	Liquid in PBS containing 50% glycerol, 0.5% BSA and 0.02% sodium azide.
Source :	Polyclonal, Rabbit,IgG
Dilution :	WB 1:500 - 1:2000. ELISA: 1:40000. Not yet tested in other applications.
Purification :	The antibody was affinity-purified from rabbit antiserum by affinity-chromatography using epitope-specific immunogen.
Concentration :	1 mg/ml
Storage Stability :	-15°C to -25°C/1 year(Do not lower than -25°C)

Observed Band :	30kD
Background :	similarity:Belongs to the small GTPase superfamily. Ras family.,
Function :	similarity:Belongs to the small GTPase superfamily. Ras family.,
Subcellular Location :	Cell membrane ; Lipid-anchor ; Cytoplasmic side . Nucleus, nucleolus . May cycle in and out of the nucleolus in a GTP-dependent manner.
Expression :	Expression appears to be strictly limited to the central nervous system.
Sort :	14613
No4 :	1
Host :	Rabbit
Modifications :	Unmodified

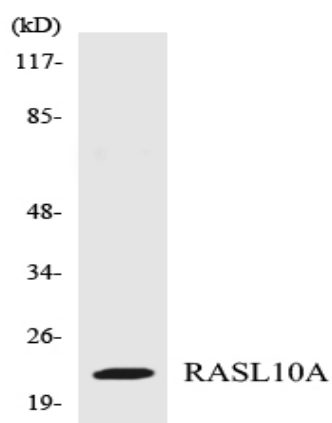
Products Images



Western Blot analysis of MOUSE-SPLEEN cells using RRP22 Polyclonal Antibody diluted at 1:1000



Western blot analysis of lysates from HeLa cells, using RASL10A Antibody. The lane on the right is blocked with the synthesized peptide.



Western blot analysis of the lysates from 293 cells using RASL10A antibody.