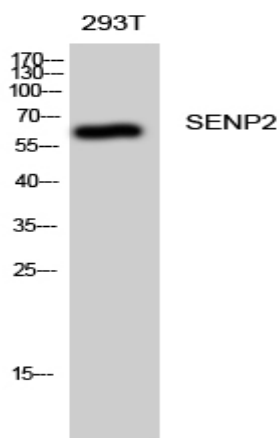


SENP2 Polyclonal Antibody

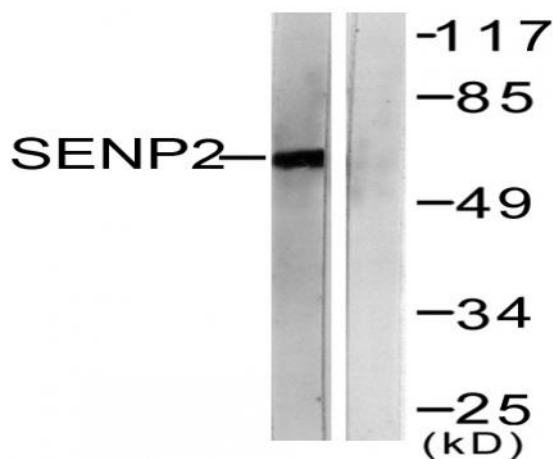
Catalog No :	YT4237
Reactivity :	Human;Mouse;Rat
Applications :	WB;IHC;IF;ELISA
Target :	SENP2
Fields :	>>Nucleocytoplasmic transport;>>Wnt signaling pathway
Gene Name :	SENP2
Protein Name :	Sentrin-specific protease 2
Human Gene Id :	59343
Human Swiss Prot No :	Q9HC62
Mouse Gene Id :	75826
Mouse Swiss Prot No :	Q91ZX6
Rat Gene Id :	78973
Rat Swiss Prot No :	Q9EQE1
Immunogen :	The antiserum was produced against synthesized peptide derived from human SENP2. AA range:481-530
Specificity :	SENP2 Polyclonal Antibody detects endogenous levels of SENP2 protein.
Formulation :	Liquid in PBS containing 50% glycerol, 0.5% BSA and 0.02% sodium azide.
Source :	Polyclonal, Rabbit,IgG
Dilution :	WB 1:500 - 1:2000. IHC 1:100 - 1:300. ELISA: 1:20000.. IF 1:50-200

Purification :	The antibody was affinity-purified from rabbit antiserum by affinity-chromatography using epitope-specific immunogen.
Concentration :	1 mg/ml
Storage Stability :	-15°C to -25°C/1 year(Do not lower than -25°C)
Observed Band :	68kD
Cell Pathway :	WNT;WNT-T CELL
Background :	SUMO1 (UBL1; MIM 601912) is a small ubiquitin-like protein that can be covalently conjugated to other proteins. SENP2 is one of a group of enzymes that process newly synthesized SUMO1 into the conjugatable form and catalyze the deconjugation of SUMO1-containing species.[supplied by OMIM, Apr 2004],
Function :	domain:The N-terminus is necessary and sufficient for nuclear envelope targeting.,function:Protease that catalyzes two essential functions in the SUMO pathway: processing of full-length SUMO1, SUMO2 and SUMO3 to their mature forms and deconjugation of SUMO1, SUMO2 and SUMO3 from targeted proteins. May down-regulate CTNNB1 levels and thereby modulate the Wnt pathway.,PTM:Polyubiquitinated; which leads to proteasomal degradation.,similarity:Belongs to the peptidase C48 family.,subcellular location:Shuttles between cytoplasm and nucleus.,subunit:Binds to SUMO2 and SUMO3 (By similarity). Interacts with the C-terminal domain of NUP153 via its N-terminus.,
Subcellular Location :	Nucleus, nuclear pore complex . Nucleus membrane ; Peripheral membrane protein ; Nucleoplasmic side . Cytoplasm . Shuttles between cytoplasm and nucleus. .
Expression :	Brain,Fetal brain,Melanoma,Teratocarcinoma,
Tag :	orthogonal
Sort :	16224
No4 :	1
Host :	Rabbit
Modifications :	Unmodified

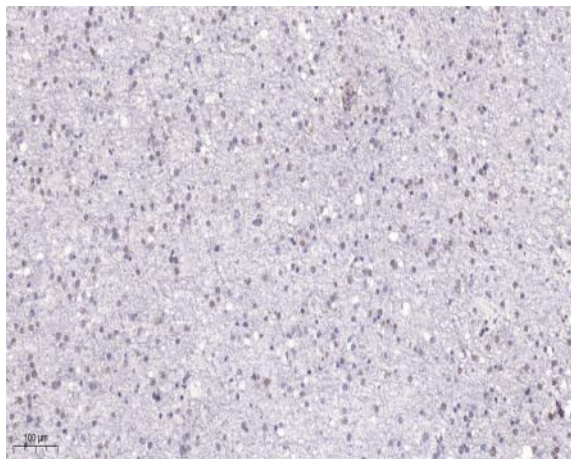
Products Images



Western Blot analysis of 293T cells using SENP2 Polyclonal Antibody diluted at 1:1000



Western blot analysis of lysates from MDA-MB-435 cells, using SENP2 Antibody. The lane on the right is blocked with the synthesized peptide.



Immunohistochemical analysis of paraffin-embedded human brain. 1, Tris-EDTA, pH 9.0 was used for antigen retrieval. 2 Antibody was diluted at 1:200 (4° overnight). 3, Secondary antibody was diluted at 1:200 (room temperature, 45min).