

SENP3 Polyclonal Antibody

| | |
|------------------------------|---|
| Catalog No : | YT4238 |
| Reactivity : | Human;Mouse |
| Applications : | WB;IHC;IF;ELISA |
| Target : | SENP3 |
| Gene Name : | SENP3 |
| Protein Name : | Sentrin-specific protease 3 |
| Human Gene Id : | 26168 |
| Human Swiss Prot No : | Q9H4L4 |
| Mouse Gene Id : | 80886 |
| Mouse Swiss Prot No : | Q9EP97 |
| Immunogen : | The antiserum was produced against synthesized peptide derived from human SENP3. AA range:10-59 |
| Specificity : | SENP3 Polyclonal Antibody detects endogenous levels of SENP3 protein. |
| Formulation : | Liquid in PBS containing 50% glycerol, 0.5% BSA and 0.02% sodium azide. |
| Source : | Polyclonal, Rabbit,IgG |
| Dilution : | WB 1:500 - 1:2000. IHC 1:100 - 1:300. ELISA: 1:5000.. IF 1:50-200 |
| Purification : | The antibody was affinity-purified from rabbit antiserum by affinity-chromatography using epitope-specific immunogen. |
| Concentration : | 1 mg/ml |
| Storage Stability : | -15°C to -25°C/1 year(Do not lower than -25°C) |

Observed Band : 80kD

Background : The reversible posttranslational modification of proteins by the addition of small ubiquitin-like SUMO proteins (see SUMO1; MIM 601912) is required for numerous biologic processes. SUMO-specific proteases, such as SENP3, are responsible for the initial processing of SUMO precursors to generate a C-terminal diglycine motif required for the conjugation reaction. They also have isopeptidase activity for the removal of SUMO from high molecular mass SUMO conjugates (Di Bacco et al., 2006 [PubMed 16738315]).[supplied by OMIM, Jun 2009],

Function : function:Protease that releases SUMO2 and SUMO3 monomers from sumoylated substrates, but has only weak activity against SUMO1 conjugates. Deconjugates SUMO2 from MEF2D, which increases its transcriptional activation capability.,similarity:Belongs to the peptidase C48 family.,subunit:Binds to UBL1 and SMT3H1.,

Subcellular Location : Nucleus, nucleolus . Nucleus, nucleoplasm . Cytoplasm . Redistributes between the nucleolus and the nucleoplasm in response to mild oxidative stress (PubMed:19680224). Mainly found in the nucleoplasm, with low levels detected in the cytoplasmic and chromatin fractions (By similarity). .

Expression : Epithelium,Lymph,Melanoma,Uterus,

Tag : hot

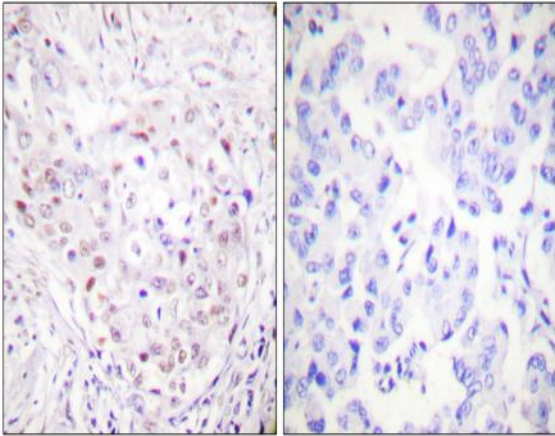
Sort : 16225

No4 : 1

Host : Rabbit

Modifications : Unmodified

[Products Images](#)



Immunohistochemistry analysis of paraffin-embedded human breast carcinoma tissue, using SENP3 Antibody. The picture on the right is blocked with the synthesized peptide.