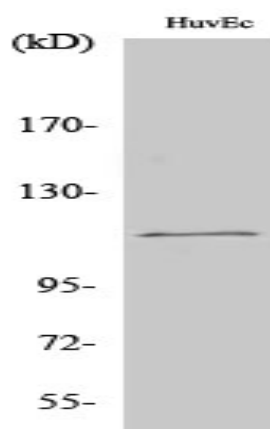


SENP7 Polyclonal Antibody

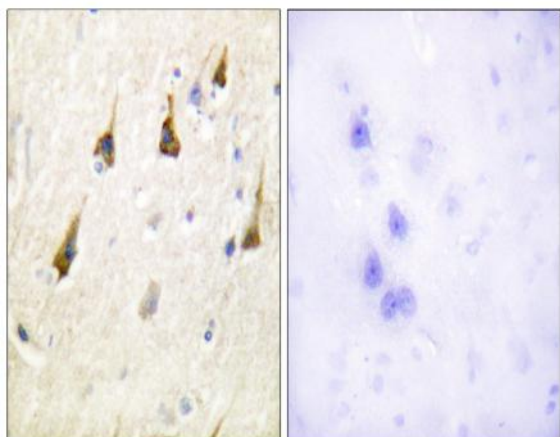
Catalog No :	YT4241
Reactivity :	Human;Mouse
Applications :	WB;IHC;IF;ELISA
Target :	SENP7
Gene Name :	SENP7
Protein Name :	Sentrin-specific protease 7
Human Gene Id :	57337
Human Swiss Prot No :	Q9BQF6
Mouse Gene Id :	66315
Mouse Swiss Prot No :	Q8BUH8
Immunogen :	The antiserum was produced against synthesized peptide derived from human SENP7. AA range:991-1040
Specificity :	SENP7 Polyclonal Antibody detects endogenous levels of SENP7 protein.
Formulation :	Liquid in PBS containing 50% glycerol, 0.5% BSA and 0.02% sodium azide.
Source :	Polyclonal, Rabbit,IgG
Dilution :	WB 1:500 - 1:2000. IHC 1:100 - 1:300. ELISA: 1:40000.. IF 1:50-200
Purification :	The antibody was affinity-purified from rabbit antiserum by affinity-chromatography using epitope-specific immunogen.
Concentration :	1 mg/ml
Storage Stability :	-15°C to -25°C/1 year(Do not lower than -25°C)

Observed Band : 112kD**Background :** The reversible posttranslational modification of proteins by the addition of small ubiquitin-like SUMO proteins (see SUMO1; MIM 601912) is required for many cellular processes. SUMO-specific proteases, such as SENP7, process SUMO precursors to generate a C-terminal diglycine motif required for the conjugation reaction. They also display isopeptidase activity for deconjugation of SUMO-conjugated substrates (Lima and Reverter, 2008 [PubMed 18799455]).[supplied by OMIM, Jun 2009],**Function :** alternative products:Experimental confirmation may be lacking for some isoforms,caution:The sequence shown here is derived from an Ensembl automatic analysis pipeline and should be considered as preliminary data.,function:Protease that deconjugates SUMO2 and SUMO3 from targeted proteins, but not SUMO1. Catalyzes the deconjugation of poly-SUMO2 and poly-SUMO3 chains. Has very low efficiency in processing full-length SUMO proteins to their mature forms.,similarity:Belongs to the peptidase C48 family.,**Subcellular Location :** Cytoplasm .**Expression :** Brain,Epithelium,Fetal kidney,Placenta,**Sort :** 16228**No4 :** 1**Host :** Rabbit**Modifications :** Unmodified

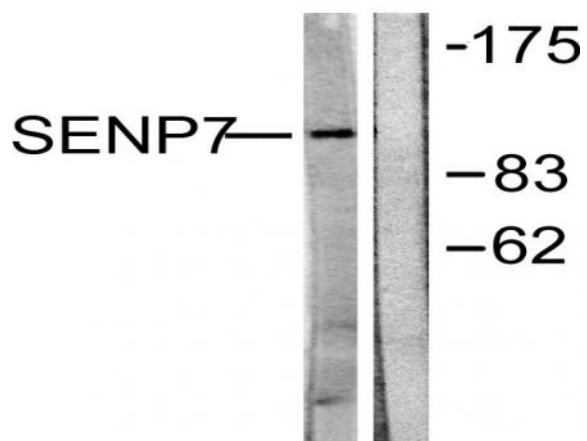
Products Images



Western Blot analysis of various cells using SENP7 Polyclonal Antibody cells nucleus extracted by Minute TM Cytoplasmic and Nuclear Fractionation kit (SC-003, Inventbiotech, MN, USA).



Immunohistochemistry analysis of paraffin-embedded human brain tissue, using SENP7 Antibody. The picture on the right is blocked with the synthesized peptide.



Western blot analysis of lysates from HUVEC cells, using SENP7 Antibody. The lane on the right is blocked with the synthesized peptide.