

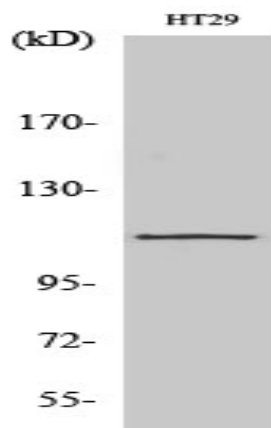
SERCA1 Polyclonal Antibody

Catalog No :	YT4253
Reactivity :	Human;Mouse;Rat;Salamander;Pig
Applications :	WB;IHC;IF;ELISA
Target :	SERCA1
Fields :	>>Calcium signaling pathway;>>cGMP-PKG signaling pathway;>>cAMP signaling pathway;>>Cardiac muscle contraction;>>Adrenergic signaling in cardiomyocytes;>>Thyroid hormone signaling pathway;>>Pancreatic secretion;>>Alzheimer disease;>>Spinocerebellar ataxia;>>Pathways of neurodegeneration - multiple diseases;>>Hypertrophic cardiomyopathy;>>Arrhythmogenic right ventricular cardiomyopathy;>>Dilated cardiomyopathy;>>Diabetic cardiomyopathy
Gene Name :	ATP2A1
Protein Name :	Sarcoplasmic/endoplasmic reticulum calcium ATPase 1
Human Gene Id :	487
Human Swiss Prot No :	O14983
Mouse Gene Id :	11937
Mouse Swiss Prot No :	Q8R429
Rat Gene Id :	116601
Rat Swiss Prot No :	Q64578
Immunogen :	The antiserum was produced against synthesized peptide derived from human ATP2A1. AA range:548-597
Specificity :	SERCA1 Polyclonal Antibody detects endogenous levels of SERCA1 protein.
Formulation :	Liquid in PBS containing 50% glycerol, 0.5% BSA and 0.02% sodium azide.

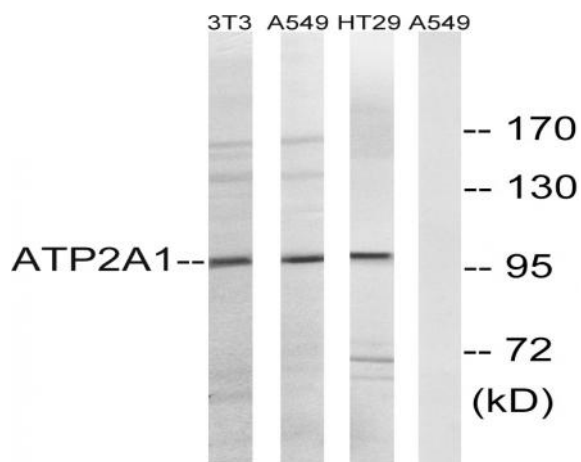
Source :	Polyclonal, Rabbit,IgG
Dilution :	WB 1:500 - 1:2000. IHC 1:100 - 1:300. ELISA: 1:10000.. IF 1:50-200
Purification :	The antibody was affinity-purified from rabbit antiserum by affinity-chromatography using epitope-specific immunogen.
Concentration :	1 mg/ml
Storage Stability :	-15°C to -25°C/1 year(Do not lower than -25°C)
Observed Band :	100kD
Cell Pathway :	Calcium;Alzheimer's disease;
Background :	<p>This gene encodes one of the SERCA Ca(2+)-ATPases, which are intracellular pumps located in the sarcoplasmic or endoplasmic reticula of muscle cells. This enzyme catalyzes the hydrolysis of ATP coupled with the translocation of calcium from the cytosol to the sarcoplasmic reticulum lumen, and is involved in muscular excitation and contraction. Mutations in this gene cause some autosomal recessive forms of Brody disease, characterized by increasing impairment of muscular relaxation during exercise. Alternative splicing results in three transcript variants encoding different isoforms. [provided by RefSeq, Oct 2013],</p>
Function :	<p>catalytic activity:ATP + H(2)O + Ca(2+)(Cis) = ADP + phosphate + Ca(2+)(Trans).,developmental stage:Isoform SERCA1A accounts for more than 99% of SERCA1 isoforms expressed in adult, while isoform SERCA1B predominates in neo-natal fibers.,disease:Defects in ATP2A1 are the cause of Brody disease (BD) [MIM:601003]. BD is an autosomal recessive myopathy characterized by increasing impairment of relaxation of fast twist skeletal muscle during exercise.,enzyme regulation:Reversibly inhibited by phospholamban (PLN) at low calcium concentrations. Dephosphorylated PLN decreases the apparent affinity of the ATPase for calcium. This inhibition is regulated by the phosphorylation of PLN.,function:This magnesium-dependent enzyme catalyzes the hydrolysis of ATP coupled with the translocation of calcium from the cytosol to the sarcoplasmic reticulum lumen. Contributes to calcium sequestration involved</p>
Subcellular Location :	Endoplasmic reticulum membrane ; Multi-pass membrane protein . Sarcoplasmic reticulum membrane ; Multi-pass membrane protein .
Expression :	Skeletal muscle, fast twitch muscle (type II) fibers.
Tag :	orthogonal
Sort :	16240

No4 :	1
Host :	Rabbit
Modifications :	Unmodified

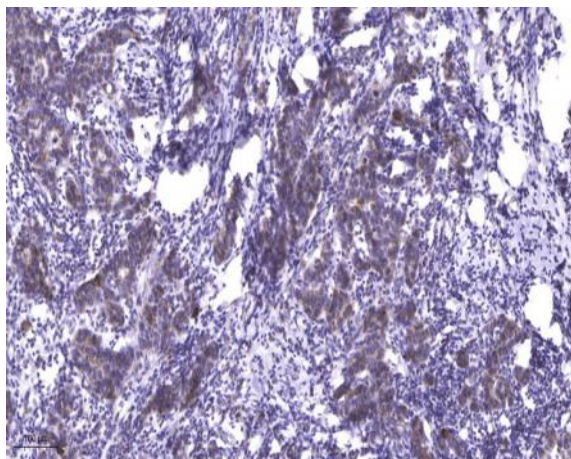
Products Images



Western Blot analysis of various cells using SERCA1 Polyclonal Antibody diluted at 1:2000



Western blot analysis of lysates from HT-29, A549, and NIH/3T3 cells, using ATP2A1 Antibody. The lane on the right is blocked with the synthesized peptide.



Immunohistochemical analysis of paraffin-embedded human Breast cancer. 1, Antibody was diluted at 1:200(4° overnight). 2, Tris-EDTA,pH9.0 was used for antigen retrieval. 3,Secondary antibody was diluted at 1:200(room temperature, 45min).