

SERGEF Polyclonal Antibody

Catalog No :	YT4254
Reactivity :	Human;Mouse
Applications :	WB;ELISA;IHC
Target :	SERGEF
Gene Name :	SERGEF
Protein Name :	Secretion-regulating guanine nucleotide exchange factor
Human Gene Id :	26297
Human Swiss Prot No :	Q9UGK8
Mouse Swiss Prot No :	Q80YD6
Immunogen :	The antiserum was produced against synthesized peptide derived from human SERGEF. AA range:179-228
Specificity :	SERGEF Polyclonal Antibody detects endogenous levels of SERGEF protein.
Formulation :	Liquid in PBS containing 50% glycerol, 0.5% BSA and 0.02% sodium azide.
Source :	Polyclonal, Rabbit,IgG
Dilution :	WB 1:500-2000;IHC 1:50-300; ELISA 2000-20000
Purification :	The antibody was affinity-purified from rabbit antiserum by affinity-chromatography using epitope-specific immunogen.
Concentration :	1 mg/ml
Storage Stability :	-15°C to -25°C/1 year(Do not lower than -25°C)
Observed Band :	50kD

Cell Pathway : Regulation of Actin Dynamics; AMPK

Background : function:Probable guanine nucleotide exchange factor (GEF), which may be involved in the secretion process.,PTM:Phosphorylated upon DNA damage, probably by ATM or ATR.,similarity:Contains 7 RCC1 repeats.,subunit:Interacts with SEC5. The interaction occurs only in the presence of magnesium or manganese and is stimulated by dCTP or GTP.,

Function : function:Probable guanine nucleotide exchange factor (GEF), which may be involved in the secretion process.,PTM:Phosphorylated upon DNA damage, probably by ATM or ATR.,similarity:Contains 7 RCC1 repeats.,subunit:Interacts with SEC5. The interaction occurs only in the presence of magnesium or manganese and is stimulated by dCTP or GTP.,

Subcellular Location : Cytoplasm . Nucleus .

Expression : Fetal brain,Ovary,

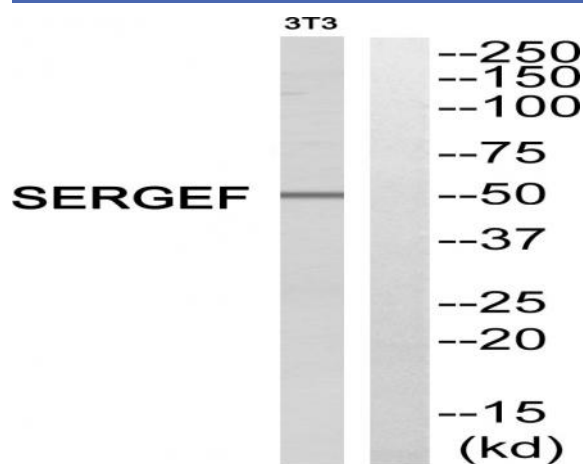
Sort : 16242

No4 : 1

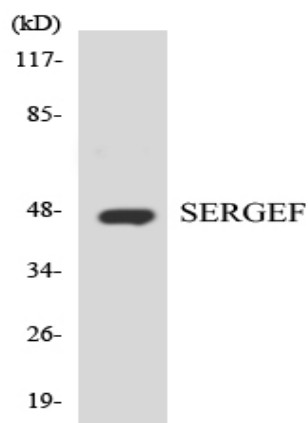
Host : Rabbit

Modifications : Unmodified

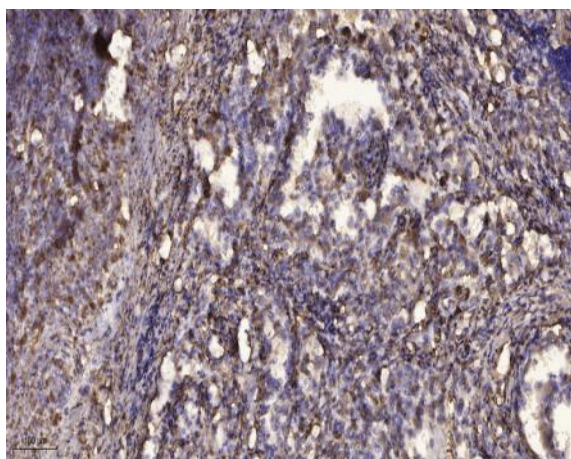
Products Images



Western blot analysis of SERGEF Antibody. The lane on the right is blocked with the SERGEF peptide.



Western blot analysis of the lysates from HT-29 cells using SERGEF antibody.



Immunohistochemical analysis of paraffin-embedded human Squamous cell carcinoma of lung. 1, Antibody was diluted at 1:200(4° overnight). 2, Tris-EDTA,pH9.0 was used for antigen retrieval. 3,Secondary antibody was diluted at 1:200(room temperature, 45min).