

## Serine racemase Polyclonal Antibody

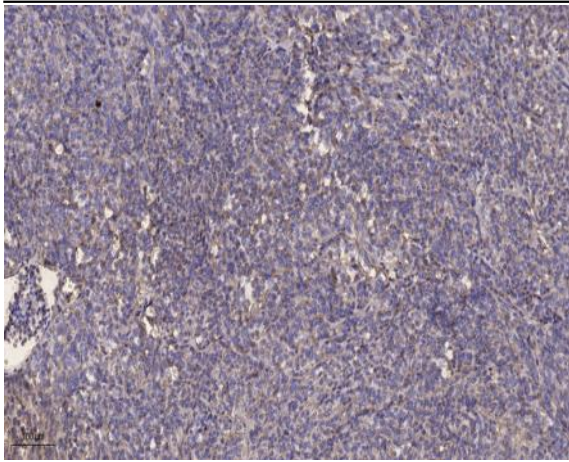
<b>Catalog No :</b>	YT4256
<b>Reactivity :</b>	Human;Rat;Mouse;
<b>Applications :</b>	IHC;IF;ELISA
<b>Target :</b>	Serine racemase
<b>Fields :</b>	>>Glycine, serine and threonine metabolism;>>D-Amino acid metabolism;>>Metabolic pathways
<b>Gene Name :</b>	SRR
<b>Protein Name :</b>	Serine racemase
<b>Human Gene Id :</b>	63826
<b>Human Swiss Prot No :</b>	Q9GZT4
<b>Mouse Swiss Prot No :</b>	Q9QZX7
<b>Immunogen :</b>	Synthesized peptide derived from Serine racemase . at AA range: 90-170
<b>Specificity :</b>	Serine racemase Polyclonal Antibody detects endogenous levels of Serine racemase protein.
<b>Formulation :</b>	Liquid in PBS containing 50% glycerol, 0.5% BSA and 0.02% sodium azide.
<b>Source :</b>	Polyclonal, Rabbit,IgG
<b>Dilution :</b>	IHC 1:100 - 1:300. ELISA: 1:5000.. IF 1:50-200
<b>Purification :</b>	The antibody was affinity-purified from rabbit antiserum by affinity-chromatography using epitope-specific immunogen.
<b>Concentration :</b>	1 mg/ml
<b>Storage Stability :</b>	-15 °C to -25 °C/1 year(Do not lower than -25 °C)

---

<b>Molecularweight :</b>	37kD
<b>Cell Pathway :</b>	Glycine; serine and threonine metabolism;
<b>Background :</b>	catalytic activity:L-serine = D-serine.,cofactor:Pyridoxal phosphate.,function:Catalyzes the synthesis of D-serine from L-serine.,similarity:Belongs to the serine/threonine dehydratase family.,tissue specificity:Brain: expressed at high levels in hippocampus and corpus callosum, intermediate levels in substantia nigra and caudate, and low levels in amygdala, thalamus, and subthalamic nuclei. Expressed in heart, skeletal muscle, kidney and liver.,
<b>Function :</b>	catalytic activity:L-serine = D-serine.,cofactor:Pyridoxal phosphate.,function:Catalyzes the synthesis of D-serine from L-serine.,similarity:Belongs to the serine/threonine dehydratase family.,tissue specificity:Brain: expressed at high levels in hippocampus and corpus callosum, intermediate levels in substantia nigra and caudate, and low levels in amygdala, thalamus, and subthalamic nuclei. Expressed in heart, skeletal muscle, kidney and liver.,
<b>Subcellular Location :</b>	cytoplasm,plasma membrane,neuronal cell body,apical part of cell,
<b>Expression :</b>	Brain: expressed at high levels in hippocampus and corpus callosum, intermediate levels in substantia nigra and caudate, and low levels in amygdala, thalamus, and subthalamic nuclei. Expressed in heart, skeletal muscle, kidney and liver.
<b>Sort :</b>	16244
<b>No4 :</b>	1
<b>Host :</b>	Rabbit
<b>Modifications :</b>	Unmodified

---

## Products Images



Immunohistochemical analysis of paraffin-embedded human Colon cancer. 1, Antibody was diluted at 1:200(4° overnight). 2, Tris-EDTA,pH9.0 was used for antigen retrieval. 3,Secondary antibody was diluted at 1:200(room temperature, 45min).