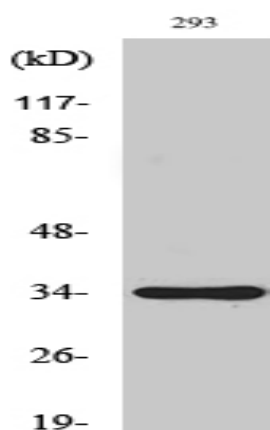


SH2D5 Polyclonal Antibody

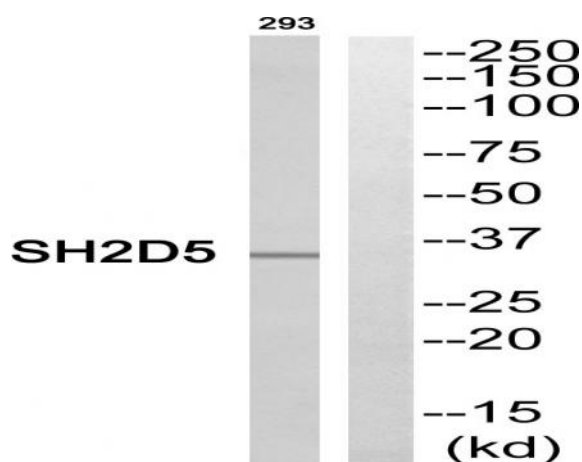
Catalog No :	YT4278
Reactivity :	Human;Mouse;Rat
Applications :	WB;ELISA;IHC
Target :	SH2D5
Gene Name :	SH2D5
Protein Name :	SH2 domain-containing protein 5
Human Gene Id :	400745
Human Swiss Prot No :	Q6ZV89
Mouse Swiss Prot No :	Q8JZW5
Immunogen :	The antiserum was produced against synthesized peptide derived from human SH2D5. AA range:281-330
Specificity :	SH2D5 Polyclonal Antibody detects endogenous levels of SH2D5 protein.
Formulation :	Liquid in PBS containing 50% glycerol, 0.5% BSA and 0.02% sodium azide.
Source :	Polyclonal, Rabbit,IgG
Dilution :	WB 1:500-2000;IHC 1:50-300; ELISA 2000-20000
Purification :	The antibody was affinity-purified from rabbit antiserum by affinity-chromatography using epitope-specific immunogen.
Concentration :	1 mg/ml
Storage Stability :	-15°C to -25°C/1 year(Do not lower than -25°C)
Observed Band :	35kD

Background :	similarity:Contains 1 SH2 domain.,
Function :	similarity:Contains 1 SH2 domain.,
Subcellular Location :	Cell junction, synapse, postsynaptic density .
Expression :	Hippocampus,Thalamus,
Sort :	16285
No4 :	1
Host :	Rabbit
Modifications :	Unmodified

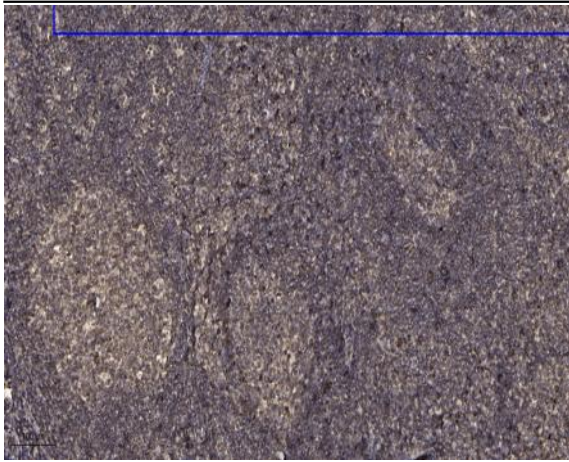
Products Images



Western Blot analysis of various cells using SH2D5 Polyclonal Antibody



Western blot analysis of SH2D5 Antibody. The lane on the right is blocked with the SH2D5 peptide.



Immunohistochemical analysis of paraffin-embedded human tonsil. 1, Antibody was diluted at 1:200(4 ° overnight). 2, Tris-EDTA,pH9.0 was used for antigen retrieval. 3,Secondary antibody was diluted at 1:200(room temperature, 45min).