

SLC6A15 Polyclonal Antibody

Catalog No :	YT4317
Reactivity :	Human;Rat;Mouse;
Applications :	WB;IHC
Target :	SLC6A15
Gene Name :	SLC6A15
Protein Name :	Sodium-dependent neutral amino acid transporter B(0)AT2
Human Gene Id :	55117
Human Swiss Prot No :	Q9H2J7
Mouse Swiss Prot No :	Q8BG16
Immunogen :	The antiserum was produced against synthesized peptide derived from human SLC6A15. AA range:32-81
Specificity :	SLC6A15 Polyclonal Antibody detects endogenous levels of SLC6A15 protein.
Formulation :	Liquid in PBS containing 50% glycerol, 0.5% BSA and 0.02% sodium azide.
Source :	Polyclonal, Rabbit,IgG
Dilution :	WB 1:500-2000;IHC 1:50-300
Purification :	The antibody was affinity-purified from rabbit antiserum by affinity-chromatography using epitope-specific immunogen.
Concentration :	1 mg/ml
Storage Stability :	-15°C to -25°C/1 year(Do not lower than -25°C)
Observed Band :	85kD

Background : This gene encodes a member of the solute carrier family 6 protein family which transports neutral amino acids. The encoded protein is thought to play a role in neuronal amino acid transport (PMID: 16185194) and may be associated with major depression (PMID: 21521612). Multiple transcript variants encoding different isoforms have been found for this gene. [provided by RefSeq, Feb 2012],

Function : function:Not yet known, orphan transporter.,similarity:Belongs to the sodium:neurotransmitter symporter (SNF) family.,

Subcellular Location : Membrane ; Multi-pass membrane protein .

Expression : Almost exclusively expressed in the brain.

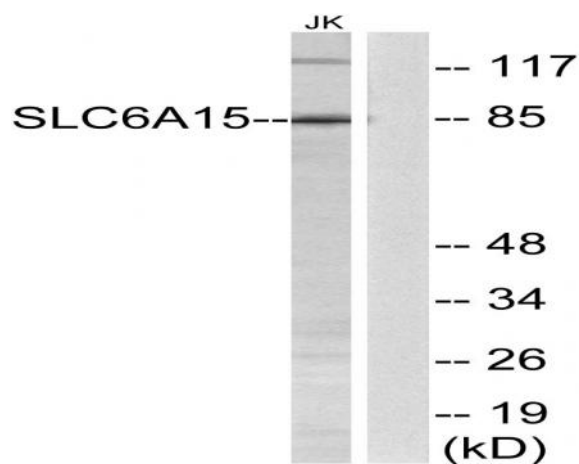
Sort : 16368

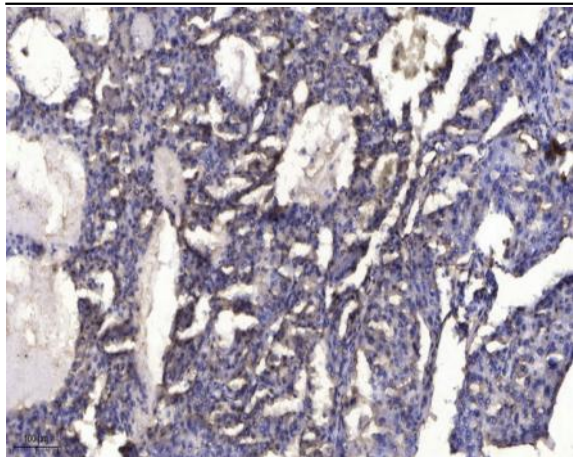
No4 : 1

Host : Rabbit

Modifications : Unmodified

Products Images





Immunohistochemical analysis of paraffin-embedded human liver cancer. 1, Antibody was diluted at 1:200(4° overnight). 2, Tris-EDTA,pH9.0 was used for antigen retrieval. 3,Secondary antibody was diluted at 1:200(room temperature, 45min).