

**SMIT Polyclonal Antibody**

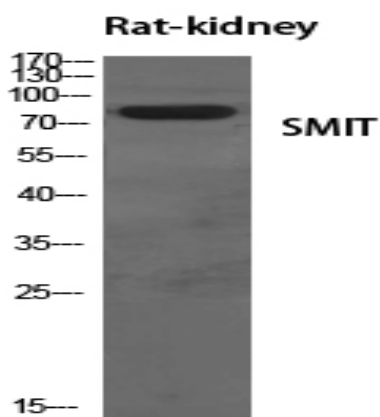
<b>Catalog No :</b>	YT4344
<b>Reactivity :</b>	Human;Mouse;Rat
<b>Applications :</b>	WB;ELISA;IHC
<b>Target :</b>	SMIT
<b>Gene Name :</b>	SLC5A3
<b>Protein Name :</b>	Sodium/myo-inositol cotransporter
<b>Human Gene Id :</b>	6526
<b>Human Swiss Prot No :</b>	P53794
<b>Mouse Gene Id :</b>	53881
<b>Mouse Swiss Prot No :</b>	Q9JKZ2
<b>Immunogen :</b>	The antiserum was produced against synthesized peptide derived from human SLC5A3. AA range:221-270
<b>Specificity :</b>	SMIT Polyclonal Antibody detects endogenous levels of SMIT protein.
<b>Formulation :</b>	Liquid in PBS containing 50% glycerol, 0.5% BSA and 0.02% sodium azide.
<b>Source :</b>	Polyclonal, Rabbit,IgG
<b>Dilution :</b>	WB 1:500-2000;IHC 1:50-300; ELISA 2000-20000
<b>Purification :</b>	The antibody was affinity-purified from rabbit antiserum by affinity-chromatography using epitope-specific immunogen.
<b>Concentration :</b>	1 mg/ml
<b>Storage Stability :</b>	-15°C to -25°C/1 year(Do not lower than -25°C)

---

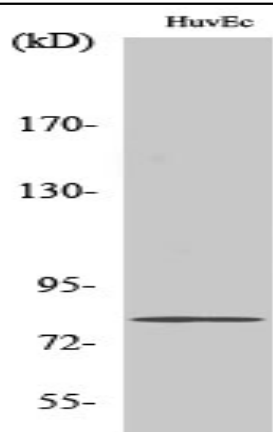
<b>Observed Band :</b>	80kD
<b>Background :</b>	function:Prevents intracellular accumulation of high concentrations of myo- inositol (an osmolyte) that result in impairment of cellular function.,similarity:Belongs to the sodium:solute symporter (SSF) (TC 2.A.21) family.,
<b>Function :</b>	function:Prevents intracellular accumulation of high concentrations of myo- inositol (an osmolyte) that result in impairment of cellular function.,similarity:Belongs to the sodium:solute symporter (SSF) (TC 2.A.21) family.,
<b>Subcellular Location :</b>	Membrane; Multi-pass membrane protein.
<b>Expression :</b>	Placenta,
<b>Tag :</b>	orthogonal
<b>Sort :</b>	16448
<b>No4 :</b>	1
<b>Host :</b>	Rabbit
<b>Modifications :</b>	Unmodified

---

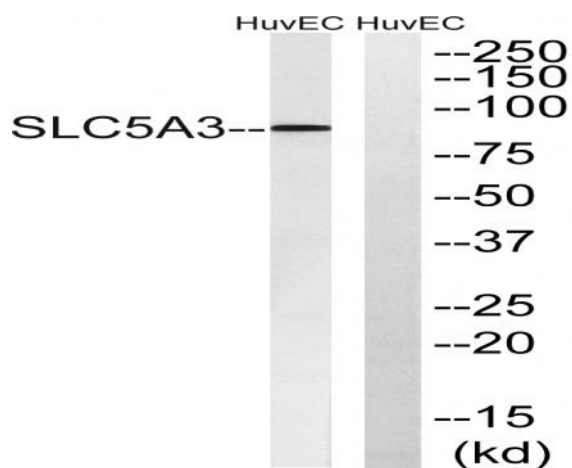
## Products Images



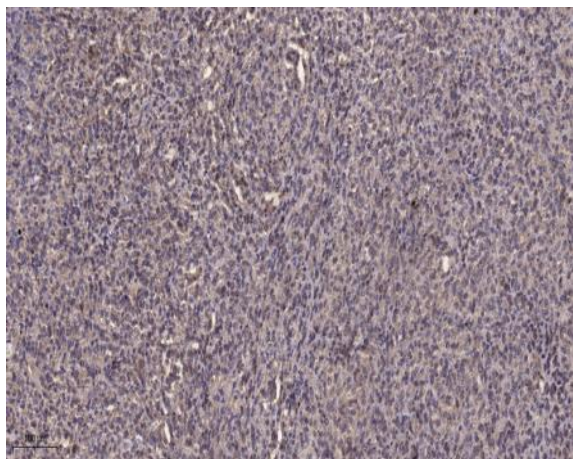
Western Blot analysis of various cells using SMIT Polyclonal  
Antibody diluted at 1:500



Western Blot analysis of HuvEc cells using SMIT Polyclonal Antibody diluted at 1:500



Western blot analysis of lysates from HUVEC cells, using SLC5A3 Antibody. The lane on the right is blocked with the synthesized peptide.



Immunohistochemical analysis of paraffin-embedded human Colon cancer. 1, Antibody was diluted at 1:200(4° overnight). 2, Tris-EDTA,pH9.0 was used for antigen retrieval. 3,Secondary antibody was diluted at 1:200(room temperature, 45min).