

**Socius Polyclonal Antibody**

<b>Catalog No :</b>	YT4361
<b>Reactivity :</b>	Human;Rat;Mouse;
<b>Applications :</b>	WB;IHC;IF;ELISA
<b>Target :</b>	Socius
<b>Gene Name :</b>	UBXN11
<b>Protein Name :</b>	UBX domain-containing protein 11
<b>Human Gene Id :</b>	91544
<b>Human Swiss Prot No :</b>	Q5T124
<b>Mouse Swiss Prot No :</b>	Q9D572
<b>Immunogen :</b>	The antiserum was produced against synthesized peptide derived from human UBXD5. AA range:131-180
<b>Specificity :</b>	Socius Polyclonal Antibody detects endogenous levels of Socius protein.
<b>Formulation :</b>	Liquid in PBS containing 50% glycerol, 0.5% BSA and 0.02% sodium azide.
<b>Source :</b>	Polyclonal, Rabbit,IgG
<b>Dilution :</b>	WB 1:500 - 1:2000. IHC 1:100 - 1:300. IF 1:200 - 1:1000. ELISA: 1:20000. Not yet tested in other applications.
<b>Purification :</b>	The antibody was affinity-purified from rabbit antiserum by affinity-chromatography using epitope-specific immunogen.
<b>Concentration :</b>	1 mg/ml
<b>Storage Stability :</b>	-15°C to -25°C/1 year(Do not lower than -25°C)
<b>Observed Band :</b>	57kD

**Background :** This gene encodes a protein with a divergent C-terminal UBX domain. The homologous protein in the rat interacts with members of the Rnd subfamily of Rho GTPases at the cell periphery through its C-terminal region. It also interacts with several heterotrimeric G proteins through their G-alpha subunits and promotes Rho GTPase activation. It is proposed to serve a bidirectional role in the promotion and inhibition of Rho activity through upstream signaling pathways. The 3' coding sequence of this gene contains a polymorphic region of 24 nt tandem repeats. Several transcripts containing between 1.5 and five repeat units have been reported. Multiple transcript variants encoding different isoforms have been found for this gene. [provided by RefSeq, Jul 2008],

**Function :** function:May be involved in the reorganization of actin cytoskeleton mediated by RND1, RND2 AND RND3. Promotes RHOA activation mediated by GNA12 and GNA13.,polymorphism:The number of repeats is polymorphic and varies from 1 to 4.,similarity:Contains 1 SEP domain.,similarity:Contains 1 UBX domain.,subunit:Interacts with GNA12, GNA13, RND1, RND2 AND RND3.,

**Subcellular Location :** Cytoplasm, cytoskeleton .

**Expression :** Colon cancer, Small intestine, Synovium, Testis,

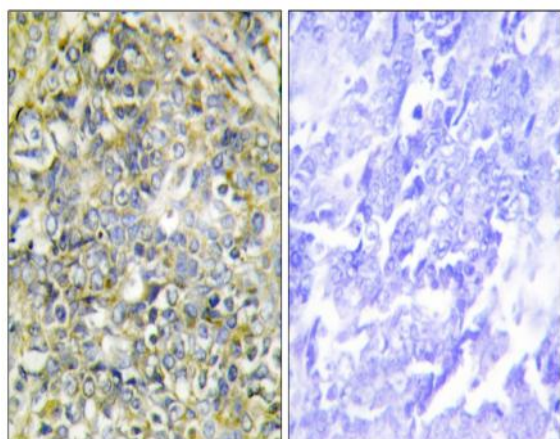
**Sort :** 16485

**No4 :** 1

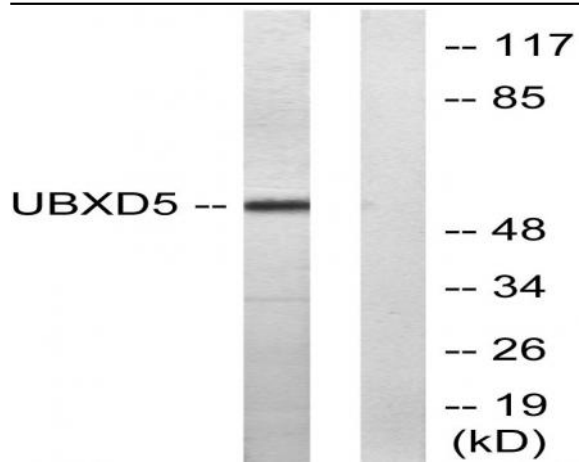
**Host :** Rabbit

**Modifications :** Unmodified

## Products Images



Immunohistochemistry analysis of paraffin-embedded human lung carcinoma tissue, using UBXD5 Antibody. The picture on the right is blocked with the synthesized peptide.



Western blot analysis of lysates from HepG2 cells, using UBXD5 Antibody. The lane on the right is blocked with the synthesized peptide.