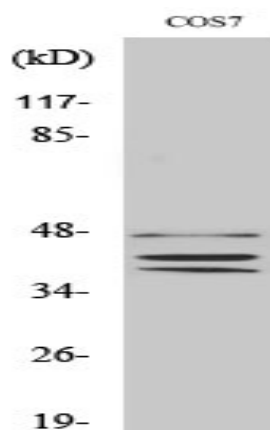


## Sox-8/9/17/18 Polyclonal Antibody

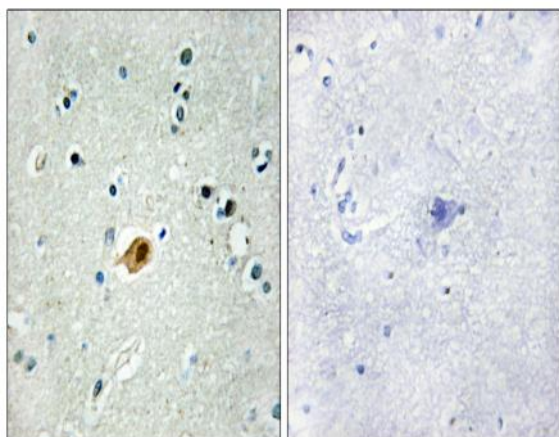
<b>Catalog No :</b>	YT4370
<b>Reactivity :</b>	Human;Mouse;Monkey
<b>Applications :</b>	WB;IHC;IF;ELISA
<b>Target :</b>	Sox-8/9/17/18
<b>Gene Name :</b>	SOX8/9/17/18
<b>Protein Name :</b>	Transcription factor SOX-8/9/17/18
<b>Human Gene Id :</b>	30812/6662/64321/54345
<b>Human Swiss Prot No :</b>	P57073/P48436/Q9H6I2/P35713
<b>Mouse Gene Id :</b>	20681/20682/20671/20672
<b>Immunogen :</b>	The antiserum was produced against synthesized peptide derived from human SOX8/9/17/18. AA range:116-165
<b>Specificity :</b>	Sox-8/9/17/18 Polyclonal Antibody detects endogenous levels of Sox-8/9/17/18 protein.
<b>Formulation :</b>	Liquid in PBS containing 50% glycerol, 0.5% BSA and 0.02% sodium azide.
<b>Source :</b>	Polyclonal, Rabbit,IgG
<b>Dilution :</b>	WB 1:500 - 1:2000. IHC 1:100 - 1:300. ELISA: 1:10000.. IF 1:50-200
<b>Purification :</b>	The antibody was affinity-purified from rabbit antiserum by affinity-chromatography using epitope-specific immunogen.
<b>Concentration :</b>	1 mg/ml
<b>Storage Stability :</b>	-15°C to -25°C/1 year(Do not lower than -25°C)
<b>Observed Band :</b>	47kD

<b>Cell Pathway :</b>	WNT;WNT-T CELL; $\beta$ -Catenin
<b>Background :</b>	SRY-box 8(SOX8) Homo sapiens This gene encodes a member of the SOX (SRY-related HMG-box) family of transcription factors involved in the regulation of embryonic development and in the determination of the cell fate. The encoded protein may act as a transcriptional activator after forming a protein complex with other proteins. This protein may be involved in brain development and function. Haploinsufficiency for this protein may contribute to the mental retardation found in haemoglobin H-related mental retardation (ART-16 syndrome). [provided by RefSeq, Jul 2008],
<b>Function :</b>	function:May play a role in central nervous system, limb and facial development. May be involved in male sex determination. Binds the consensus motif 5'-[AT][AT]CAA[AT]G-3'. ,similarity:Contains 1 HMG box DNA-binding domain.,
<b>Subcellular Location :</b>	Nucleus .
<b>Expression :</b>	Brain,Spleen,
<b>Tag :</b>	orthogonal
<b>Sort :</b>	16521
<b>No4 :</b>	1
<b>Host :</b>	Rabbit
<b>Modifications :</b>	Unmodified

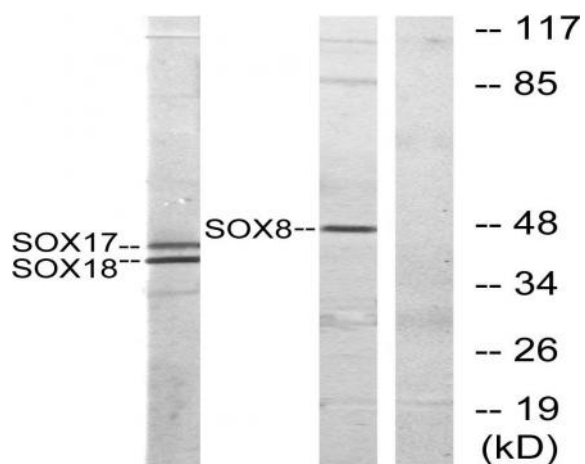
## Products Images



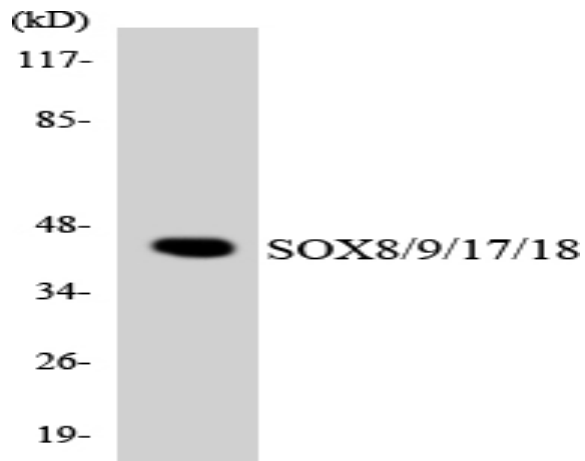
Western Blot analysis of various cells using Sox-8/9/17/18 Polyclonal Antibody cells nucleus extracted by Minute TM Cytoplasmic and Nuclear Fractionation kit (SC-003, Inventbiotech, MN, USA).



Immunohistochemistry analysis of paraffin-embedded human brain tissue, using SOX8/9/17/18 Antibody. The picture on the right is blocked with the synthesized peptide.



Western blot analysis of lysates from COS7 cells, treated with serum 10% 30', using SOX8/9/17/18 Antibody. The lane on the right is blocked with the synthesized peptide.



Western blot analysis of the lysates from HeLa cells using SOX8/9/17/18 antibody.