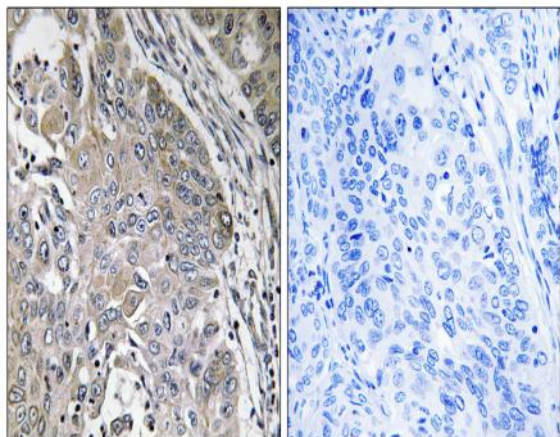


SPINK6 Polyclonal Antibody

Catalog No :	YT4386
Reactivity :	Human;Rat;Mouse;
Applications :	IHC;IF;ELISA
Target :	SPINK6
Gene Name :	SPINK6
Protein Name :	Serine protease inhibitor Kazal-type 6
Human Gene Id :	404203
Human Swiss Prot No :	Q6UWN8
Mouse Swiss Prot No :	Q8BT20
Immunogen :	The antiserum was produced against synthesized peptide derived from human SPINK6. AA range:13-62
Specificity :	SPINK6 Polyclonal Antibody detects endogenous levels of SPINK6 protein.
Formulation :	Liquid in PBS containing 50% glycerol, 0.5% BSA and 0.02% sodium azide.
Source :	Polyclonal, Rabbit,IgG
Dilution :	IHC 1:100 - 1:300. ELISA: 1:40000.. IF 1:50-200
Purification :	The antibody was affinity-purified from rabbit antiserum by affinity-chromatography using epitope-specific immunogen.
Concentration :	1 mg/ml
Storage Stability :	-15°C to -25°C/1 year(Do not lower than -25°C)
Molecularweight :	9kD

Background :	The protein encoded by this gene is a Kazal-type serine protease inhibitor that acts on kallikrein-related peptidases in the skin. Two transcript variants the same protein have been found for this gene. [provided by RefSeq, Aug 2010],
Function :	function:Probable serine protease inhibitor.,similarity:Contains 1 Kazal-like domain.,
Subcellular Location :	Secreted .
Expression :	Skin,
Sort :	16552
No4 :	1
Host :	Rabbit
Modifications :	Unmodified

Products Images



Immunohistochemistry analysis of paraffin-embedded human lung carcinoma, using SPINK6 Antibody. The picture on the right is blocked with the synthesized peptide.