

Splicing factor 1 Polyclonal Antibody

Catalog No :	YT4387
Reactivity :	Human;Mouse
Applications :	WB;IHC;IF;ELISA
Target :	Splicing factor 1
Gene Name :	SF1
Protein Name :	Splicing factor 1
Human Gene Id :	7536
Human Swiss Prot No :	Q15637
Mouse Swiss Prot No :	Q64213
Immunogen :	The antiserum was produced against synthesized peptide derived from human SF1. AA range:48-97
Specificity :	Splicing factor 1 Polyclonal Antibody detects endogenous levels of Splicing factor 1 protein.
Formulation :	Liquid in PBS containing 50% glycerol, 0.5% BSA and 0.02% sodium azide.
Source :	Polyclonal, Rabbit,IgG
Dilution :	WB 1:500 - 1:2000. IHC 1:100 - 1:300. IF 1:200 - 1:1000. ELISA: 1:20000. Not yet tested in other applications.
Purification :	The antibody was affinity-purified from rabbit antiserum by affinity-chromatography using epitope-specific immunogen.
Concentration :	1 mg/ml
Storage Stability :	-15°C to -25°C/1 year(Do not lower than -25°C)

Observed Band : 68kD

Background : This gene encodes a nuclear pre-mRNA splicing factor. The encoded protein specifically recognizes the intron branch point sequence at the 3' splice site, together with the large subunit of U2 auxiliary factor (U2AF), and is required for the early stages of spliceosome assembly. It also plays a role in nuclear pre-mRNA retention and transcriptional repression. The encoded protein contains an N-terminal U2AF ligand motif, a central hnRNP K homology motif and quaking 2 region which bind a key branch-site adenosine within the branch point sequence, a zinc knuckles domain, and a C-terminal proline-rich domain. Alternative splicing results in multiple transcript variants. [provided by RefSeq, Oct 2016],

Function : alternative products:Additional isoforms seem to exist,function:Necessary for the ATP-dependent first step of spliceosome assembly. Binds to the intron branch point sequence (BPS) 5'-UACUAAC-3' of the pre-mRNA. May act as transcription repressor.,PTM:Phosphorylation on Ser-20 interferes with U2AF2 binding and spliceosome assembly. Isoform 6 is phosphorylated on Ser-463.,similarity:Belongs to the BBP/SF1 family.,similarity:Contains 1 CCHC-type zinc finger.,similarity:Contains 1 KH domain.,subunit:Binds U2AF2. Interacts with U1 snRNA. Binds EWSR1, FUS and TAF15.,tissue specificity:Detected in lung, ovary, adrenal gland, colon, kidney, muscle, pancreas, thyroid, placenta, brain, liver and heart.,

Subcellular Location : Nucleus.

Expression : Detected in lung, ovary, adrenal gland, colon, kidney, muscle, pancreas, thyroid, placenta, brain, liver and heart.

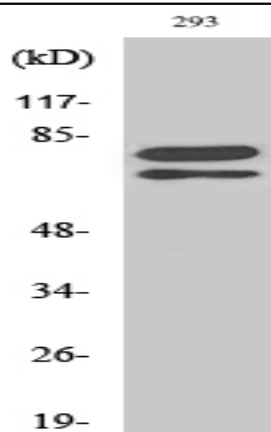
Sort : 16556

No4 : 1

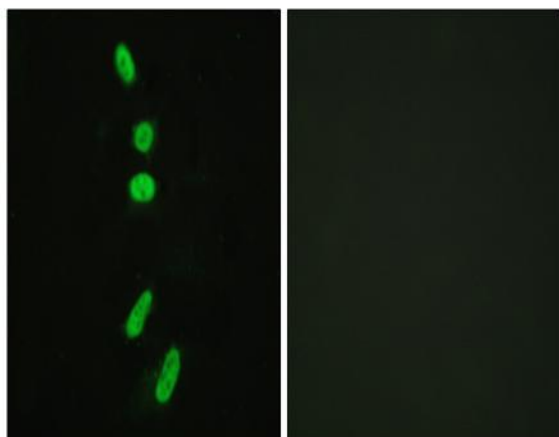
Host : Rabbit

Modifications : Unmodified

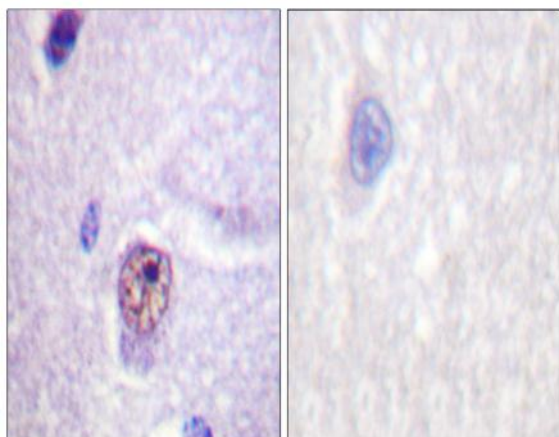
Products Images



Western Blot analysis of various cells using Splicing factor 1 Polyclonal Antibody diluted at 1:500



Immunofluorescence analysis of HeLa cells, using SF1 Antibody. The picture on the right is blocked with the synthesized peptide.



Immunohistochemistry analysis of paraffin-embedded human brain tissue, using SF1 Antibody. The picture on the right is blocked with the synthesized peptide.

