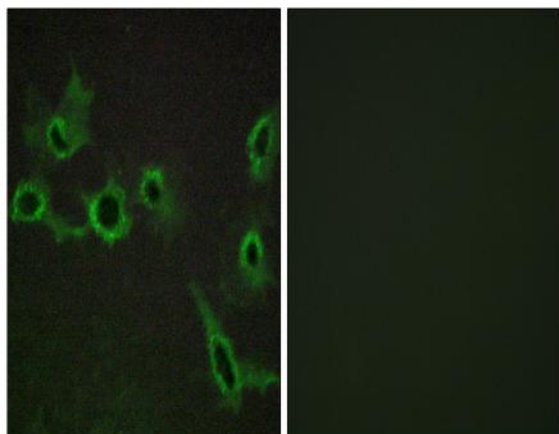


## SR-7 Polyclonal Antibody

<b>Catalog No :</b>	YT4409
<b>Reactivity :</b>	Human;Mouse;Rat
<b>Applications :</b>	IF;ELISA
<b>Target :</b>	SR-7
<b>Fields :</b>	>>Ras signaling pathway;>>Calcium signaling pathway;>>Neuroactive ligand-receptor interaction;>>Serotonergic synapse
<b>Gene Name :</b>	HTR7
<b>Protein Name :</b>	5-hydroxytryptamine receptor 7
<b>Human Gene Id :</b>	3363
<b>Human Swiss Prot No :</b>	P34969
<b>Mouse Gene Id :</b>	15566
<b>Mouse Swiss Prot No :</b>	P32304
<b>Rat Gene Id :</b>	65032
<b>Rat Swiss Prot No :</b>	P32305
<b>Immunogen :</b>	The antiserum was produced against synthesized peptide derived from human HTR7. AA range:391-440
<b>Specificity :</b>	SR-7 Polyclonal Antibody detects endogenous levels of SR-7 protein.
<b>Formulation :</b>	Liquid in PBS containing 50% glycerol, 0.5% BSA and 0.02% sodium azide.
<b>Source :</b>	Polyclonal, Rabbit,IgG
<b>Dilution :</b>	IF 1:200 - 1:1000. ELISA: 1:5000. Not yet tested in other applications.

<b>Purification :</b>	The antibody was affinity-purified from rabbit antiserum by affinity-chromatography using epitope-specific immunogen.
<b>Concentration :</b>	1 mg/ml
<b>Storage Stability :</b>	-15°C to -25°C/1 year(Do not lower than -25°C)
<b>Molecularweight :</b>	54kD
<b>Cell Pathway :</b>	Calcium;Neuroactive ligand-receptor interaction;
<b>Background :</b>	The neurotransmitter, serotonin, is thought to play a role in various cognitive and behavioral functions. The serotonin receptor encoded by this gene belongs to the superfamily of G protein-coupled receptors and the gene is a candidate locus for involvement in autistic disorder and other neuropsychiatric disorders. Three splice variants have been identified which encode proteins that differ in the length of their carboxy terminal ends. [provided by RefSeq, Jul 2008],
<b>Function :</b>	alternative products:Isoform A and isoform B appear to be expressed at higher levels,function:This is one of the several different receptors for 5-hydroxytryptamine (serotonin), a biogenic hormone that functions as a neurotransmitter, a hormone, and a mitogen. The activity of this receptor is mediated by G proteins that stimulate adenylate cyclase.,similarity:Belongs to the G-protein coupled receptor 1 family.,tissue specificity:Isoform A is the predominant isoform in spleen, caudate and hippocampus. Isoform B is expressed at lower levels, and isoform D is a minor isoform.,
<b>Subcellular Location :</b>	Cell membrane; Multi-pass membrane protein.
<b>Expression :</b>	Isoform A is the predominant isoform in spleen, caudate and hippocampus. Isoform B is expressed at lower levels. Isoform D is a minor isoform in terms of expression.
<b>Tag :</b>	hot
<b>Sort :</b>	16591
<b>No4 :</b>	1
<b>Host :</b>	Rabbit
<b>Modifications :</b>	Unmodified

## Products Images



Immunofluorescence analysis of COS7 cells, using HTR7 Antibody. The picture on the right is blocked with the synthesized peptide.