

StARD10 Polyclonal Antibody

Catalog No :	YT4437
Reactivity :	Human;Mouse;Rat
Applications :	WB;ELISA;IHC
Target :	StARD10
Gene Name :	STARD10
Protein Name :	PCTP-like protein
Human Gene Id :	10809
Human Swiss Prot No :	Q9Y365
Mouse Gene Id :	56018
Mouse Swiss Prot No :	Q9JMD3
Immunogen :	Synthesized peptide derived from the Internal region of human StARD10.
Specificity :	StARD10 Polyclonal Antibody detects endogenous levels of StARD10 protein.
Formulation :	Liquid in PBS containing 50% glycerol, 0.5% BSA and 0.02% sodium azide.
Source :	Polyclonal, Rabbit,IgG
Dilution :	WB 1:500-2000;IHC 1:50-300; ELISA 2000-20000
Purification :	The antibody was affinity-purified from rabbit antiserum by affinity-chromatography using epitope-specific immunogen.
Concentration :	1 mg/ml
Storage Stability :	-15°C to -25°C/1 year(Do not lower than -25°C)

Observed Band : 33kD

Background : function:May play specific roles in sperm maturation or fertilization.,sequence caution:Various sequencing problems as well as a translation in a wrong frame.,similarity:Contains 1 START domain.,

Function : function:May play specific roles in sperm maturation or fertilization.,sequence caution:Various sequencing problems as well as a translation in a wrong frame.,similarity:Contains 1 START domain.,

Subcellular Location : Cell projection, cilium, flagellum . Cytoplasm . Membrane . In testis was predominantly detected at the flagella of elongated spermatids, with a strong signal also found at the tail of epididymal sperm (By similarity). Mainly cytosolic. .

Expression : Colon carcinoma,Uterus,

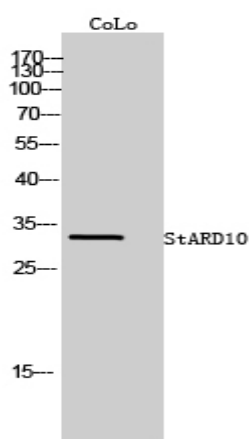
Sort : 16658

No4 : 1

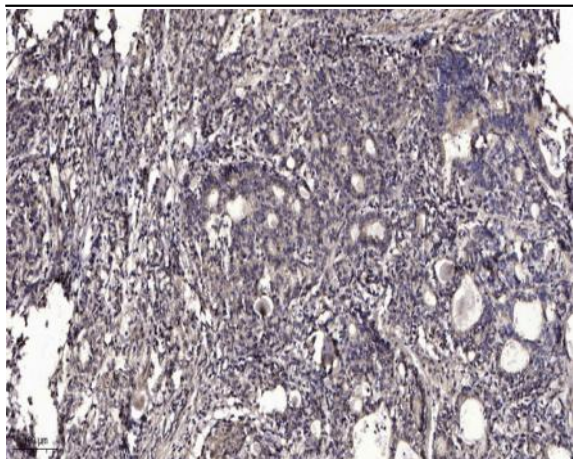
Host : Rabbit

Modifications : Unmodified

Products Images



Western Blot analysis of CoLo cells using StARD10 Polyclonal Antibody



Immunohistochemical analysis of paraffin-embedded human Gastric adenocarcinoma. 1, Antibody was diluted at 1:200(4° overnight). 2, Tris-EDTA,pH9.0 was used for antigen retrieval. 3,Secondary antibody was diluted at 1:200(room temperature, 45min).