

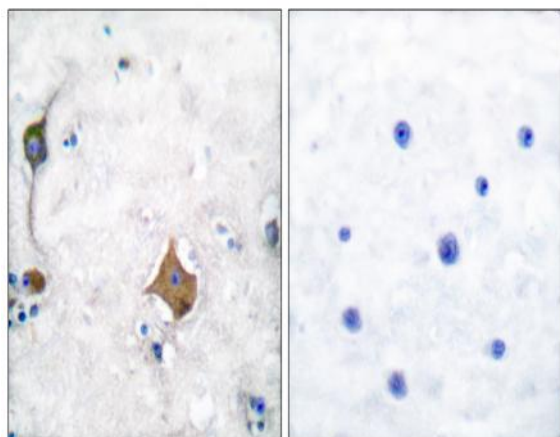
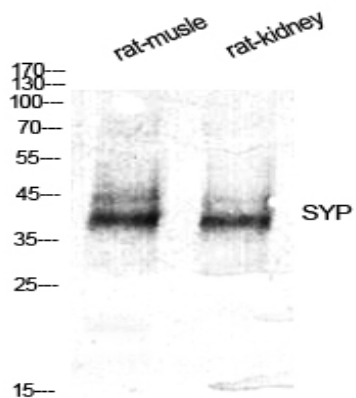
## SYP Polyclonal Antibody

<b>Catalog No :</b>	YT4500
<b>Reactivity :</b>	Human;Mouse;Rat
<b>Applications :</b>	WB;IHC;IF;ELISA
<b>Target :</b>	Synaptophysin
<b>Gene Name :</b>	SYP
<b>Protein Name :</b>	Synaptophysin
<b>Human Gene Id :</b>	6855
<b>Human Swiss Prot No :</b>	P08247
<b>Mouse Gene Id :</b>	20977
<b>Mouse Swiss Prot No :</b>	Q62277
<b>Rat Gene Id :</b>	24804
<b>Rat Swiss Prot No :</b>	P07825
<b>Immunogen :</b>	The antiserum was produced against synthesized peptide derived from human Synaptophysin. AA range:101-150
<b>Specificity :</b>	SYP Polyclonal Antibody detects endogenous levels of SYP protein.
<b>Formulation :</b>	Liquid in PBS containing 50% glycerol, 0.5% BSA and 0.02% sodium azide.
<b>Source :</b>	Polyclonal, Rabbit,IgG
<b>Dilution :</b>	WB 1:500 - 1:2000. IHC 1:100 - 1:300. ELISA: 1:10000.. IF 1:50-200
<b>Purification :</b>	The antibody was affinity-purified from rabbit antiserum by affinity-chromatography using epitope-specific immunogen.

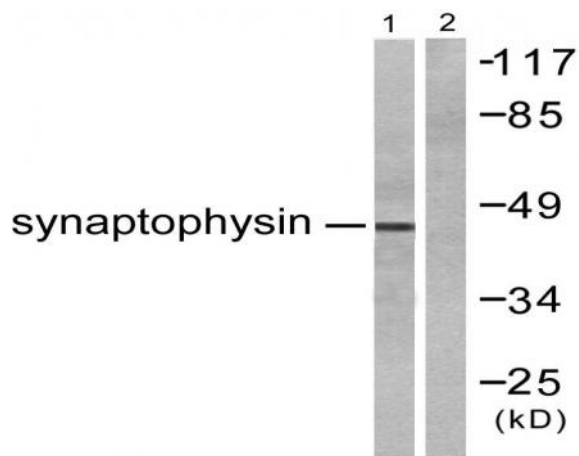
<b>Concentration :</b>	1 mg/ml
<b>Storage Stability :</b>	-15°C to -25°C/1 year(Do not lower than -25°C)
<b>Observed Band :</b>	38kD
<b>Background :</b>	This gene encodes an integral membrane protein of small synaptic vesicles in brain and endocrine cells. The protein also binds cholesterol and is thought to direct targeting of vesicle-associated membrane protein 2 (synaptobrevin) to intracellular compartments. Mutations in this gene are associated with X-linked mental retardation (XLMR). [provided by RefSeq, Aug 2011],
<b>Function :</b>	domain:The calcium-binding activity is thought to be localized in the cytoplasmic tail of the protein.,function:Possibly involved in structural functions as organizing other membrane components or in targeting the vesicles to the plasma membrane.,online information:Synaptophysin entry,PTM:Ubiquitinated; mediated by SIAH1 or SIAH2 and leading to its subsequent proteasomal degradation.,similarity:Belongs to the synaptophysin/synaptobrevin family.,similarity:Contains 1 MARVEL domain.,subunit:Homohexamer or homotetramer.,tissue specificity:Characteristic of a type of small (30-80 nm) neurosecretory vesicles, including presynaptic vesicles, but also vesicles of various neuroendocrine cells of both neuronal and epithelial phenotype.,
<b>Subcellular Location :</b>	Cytoplasmic vesicle, secretory vesicle, synaptic vesicle membrane ; Multi-pass membrane protein . Cell junction, synapse, synaptosome .
<b>Expression :</b>	Expressed in the brain, with expression in the hippocampus, the neuropil in the dentate gyrus, where expression is higher in the outer half of the molecular layer than in the inner half, and in the neuropil of CA4 and CA3 (PubMed:8838578). Expressed in the putamen (at protein level) (PubMed:17296554).
<b>Sort :</b>	1
<b>No4 :</b>	1
<b>Host :</b>	Rabbit
<b>Modifications :</b>	Unmodified

## Products Images

Western Blot analysis of various cells using SYP Polyclonal Antibody diluted at 1:500



Immunohistochemistry analysis of paraffin-embedded human brain tissue, using Synaptophysin Antibody. The picture on the right is blocked with the synthesized peptide.



Western blot analysis of lysates from LOVO cells, using Synaptophysin Antibody. The lane on the right is blocked with the synthesized peptide.