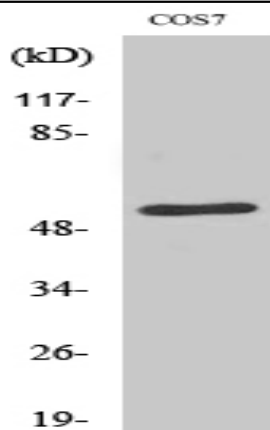


TADA2L Polyclonal Antibody

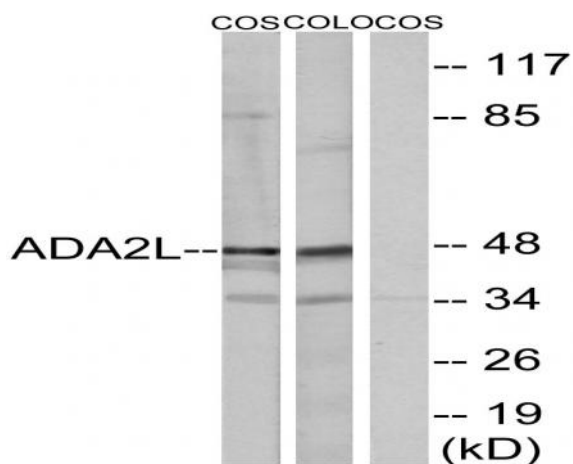
Catalog No :	YT4524
Reactivity :	Human;Mouse;Rat;Monkey
Applications :	WB;ELISA
Target :	TADA2L
Gene Name :	TADA2A
Protein Name :	Transcriptional adapter 2-alpha
Human Gene Id :	6871
Human Swiss Prot No :	O75478
Mouse Gene Id :	217031
Mouse Swiss Prot No :	Q8CHV6
Rat Gene Id :	360581
Rat Swiss Prot No :	Q6AYE3
Immunogen :	The antiserum was produced against synthesized peptide derived from human ADA2L. AA range:206-255
Specificity :	TADA2L Polyclonal Antibody detects endogenous levels of TADA2L protein.
Formulation :	Liquid in PBS containing 50% glycerol, 0.5% BSA and 0.02% sodium azide.
Source :	Polyclonal, Rabbit,IgG
Dilution :	WB 1:500 - 1:2000. ELISA: 1:10000. Not yet tested in other applications.
Purification :	The antibody was affinity-purified from rabbit antiserum by affinity-chromatography using epitope-specific immunogen.

Concentration :	1 mg/ml
Storage Stability :	-15°C to -25°C/1 year(Do not lower than -25°C)
Observed Band :	47kD
Background :	<p>Many DNA-binding transcriptional activator proteins enhance the initiation rate of RNA polymerase II-mediated gene transcription by interacting functionally with the general transcription machinery bound at the basal promoter. Adaptor proteins are usually required for this activation, possibly to acetylate and destabilize nucleosomes, thereby relieving chromatin constraints at the promoter. The protein encoded by this gene is a transcriptional activator adaptor and has been found to be part of the PCAF histone acetylase complex. Several alternatively spliced transcript variants encoding different isoforms of this gene have been described, but the full-length nature of some of these variants has not been determined. [provided by RefSeq, Oct 2009],</p>
Function :	<p>function: Binds double-stranded DNA. Binds dinucleosomes, probably at the linker region between neighboring nucleosomes. Plays a role in chromatin remodeling (By similarity). Required for the function of some acidic activation domains, which activate transcription from a distant site., similarity: Contains 1 SANT domain., similarity: Contains 1 SWIRM domain., subunit: Interacts with GCN5 and NR3C1. Associated with the P/CAF protein in the PCAF complex. Component of the PCAF complex, at least composed of TADA2L/ADA2, TADA3L/ADA3, TAF5L/PAF65-beta, TAF6L/PAF65-alpha, TAF10/TAFII30, TAF12/TAFII20, TAF9/TAFII31 and TRRAP., tissue specificity: Expressed in all tissues, but most abundantly in testis.,</p>
Subcellular Location :	Nucleus . Chromosome .
Expression :	Expressed in all tissues, but most abundantly in testis.
Sort :	16885
No4 :	1
Host :	Rabbit
Modifications :	Unmodified

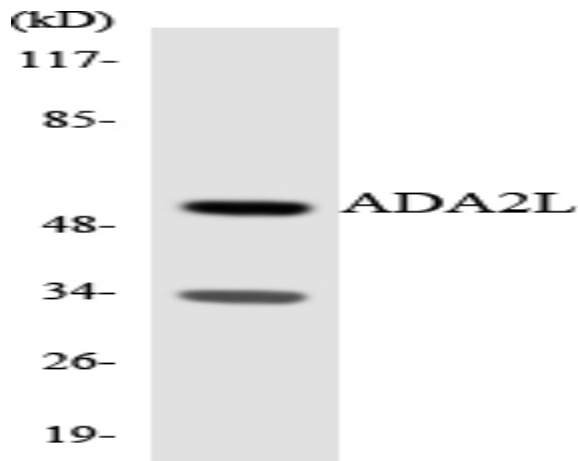
Products Images



Western Blot analysis of various cells using TADA2L Polyclonal Antibody diluted at 1:2000 cells nucleus extracted by Minute TM Cytoplasmic and Nuclear Fractionation kit (SC-003, Inventbiotech, MN, USA).



Western blot analysis of lysates from COS7 and COLO205 cells, using ADA2L Antibody. The lane on the right is blocked with the synthesized peptide.



Western blot analysis of the lysates from RAW264.7 cells using ADA2L antibody.