

TAGAP Polyclonal Antibody

| | |
|------------------------------|---|
| Catalog No : | YT4534 |
| Reactivity : | Human;Mouse |
| Applications : | IHC;IF;ELISA |
| Target : | TAGAP |
| Gene Name : | TAGAP |
| Protein Name : | T-cell activation Rho GTPase-activating protein |
| Human Gene Id : | 117289 |
| Human Swiss Prot No : | Q8N103 |
| Mouse Swiss Prot No : | B2RWW0 |
| Immunogen : | The antiserum was produced against synthesized peptide derived from human TAGAP. AA range:191-240 |
| Specificity : | TAGAP Polyclonal Antibody detects endogenous levels of TAGAP protein. |
| Formulation : | Liquid in PBS containing 50% glycerol, 0.5% BSA and 0.02% sodium azide. |
| Source : | Polyclonal, Rabbit,IgG |
| Dilution : | IHC 1:100 - 1:300. ELISA: 1:5000.. IF 1:50-200 |
| Purification : | The antibody was affinity-purified from rabbit antiserum by affinity-chromatography using epitope-specific immunogen. |
| Concentration : | 1 mg/ml |
| Storage Stability : | -15°C to -25°C/1 year(Do not lower than -25°C) |
| Molecularweight : | 81kD |

Background : This gene encodes a member of the Rho GTPase-activator protein superfamily. The encoded protein may function as a Rho GTPase-activating protein. Alterations in this gene may be associated with several diseases, including rheumatoid arthritis, celiac disease, and multiple sclerosis. Alternate splicing results in multiple transcript variants encoding distinct isoforms. [provided by RefSeq, Jul 2013],

Function : function:May function as a GTPase-activating protein and may play important roles during T-cell activation.,similarity:Contains 1 Rho-GAP domain.,

Subcellular Location : cytosol,

Expression : Lung,Spleen,Synovial membrane tissue,

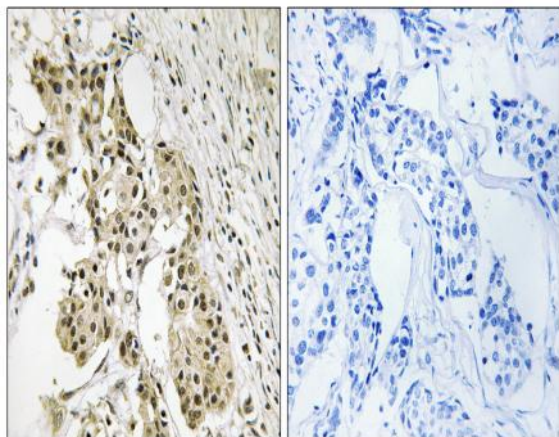
Sort : 16896

No4 : 1

Host : Rabbit

Modifications : Unmodified

Products Images



Immunohistochemistry analysis of paraffin-embedded human breast carcinoma, using TAGAP Antibody. The picture on the right is blocked with the synthesized peptide.