

TASK-5 Polyclonal Antibody

Catalog No :	YT4542
Reactivity :	Human;Rat
Applications :	WB;IHC;IF;ELISA
Target :	TASK-5
Gene Name :	KCNK15
Protein Name :	Potassium channel subfamily K member 15
Human Gene Id :	60598
Human Swiss Prot No :	Q9H427
Immunogen :	The antiserum was produced against synthesized peptide derived from human KCNK15. AA range:273-322
Specificity :	TASK-5 Polyclonal Antibody detects endogenous levels of TASK-5 protein.
Formulation :	Liquid in PBS containing 50% glycerol, 0.5% BSA and 0.02% sodium azide.
Source :	Polyclonal, Rabbit,IgG
Dilution :	WB 1:500 - 1:2000. IHC 1:100 - 1:300. ELISA: 1:20000.. IF 1:50-200
Purification :	The antibody was affinity-purified from rabbit antiserum by affinity-chromatography using epitope-specific immunogen.
Concentration :	1 mg/ml
Storage Stability :	-15°C to -25°C/1 year(Do not lower than -25°C)
Observed Band :	42kD
Background :	potassium two pore domain channel subfamily K member 15(KCNK15) Homo sapiens This gene encodes one of the members of the superfamily of potassium

channel proteins containing two pore-forming P domains. The product of this gene has not been shown to be a functional channel, however, it may require other non-pore-forming proteins for activity. [provided by RefSeq, Jul 2008],

Function :

function:Probable potassium channel subunit. No channel activity observed in heterologous systems. May need to associate with another protein to form a functional channel.,polymorphism:Three variant polypeptides are known: TASK-5A, TASK-5B and TASK-5C. The sequence shown is that of TASK-5C.,similarity:Belongs to the two pore domain potassium channel (TC 1.A.1.8) family.,subunit:Heterodimer .,tissue specificity:Detected in pancreas, heart, placenta, lung, liver, kidney, ovary, testis, skeletal muscle and adrenal gland, and at lower levels in prostate, spleen and thyroid gland.,

Subcellular Location :

Membrane; Multi-pass membrane protein.

Expression :

Detected in pancreas, heart, placenta, lung, liver, kidney, ovary, testis, skeletal muscle and adrenal gland, and at lower levels in prostate, spleen and thyroid gland.

Sort :

16916

No4 :

1

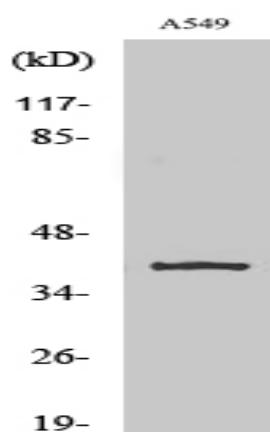
Host :

Rabbit

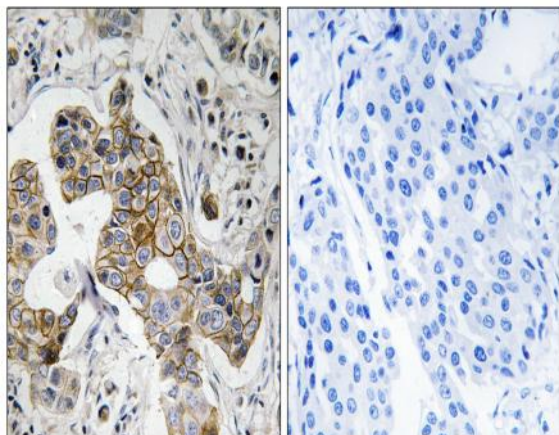
Modifications :

Unmodified

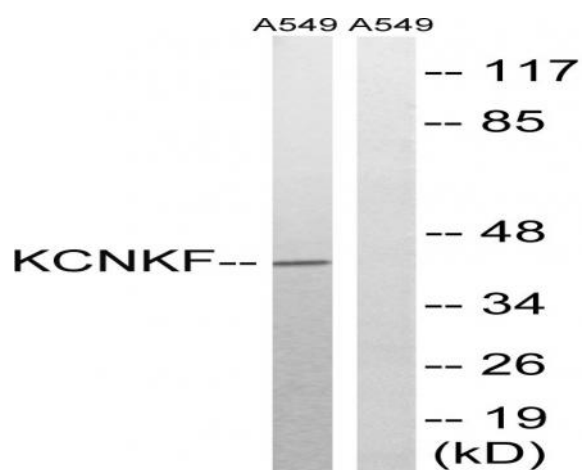
Products Images



Western Blot analysis of various cells using TASK-5 Polyclonal Antibody diluted at 1:1000



Immunohistochemistry analysis of paraffin-embedded human breast carcinoma tissue, using KCNK15 Antibody. The picture on the right is blocked with the synthesized peptide.



Western blot analysis of lysates from A549 cells, using KCNK15 Antibody. The lane on the right is blocked with the synthesized peptide.