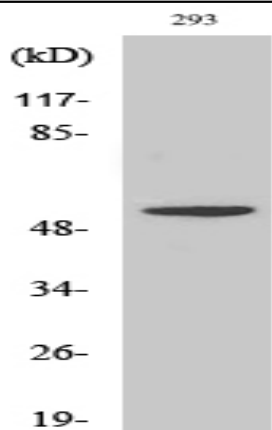


TDE1 Polyclonal Antibody

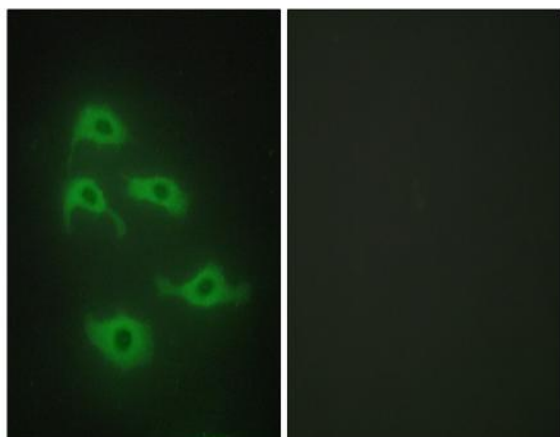
Catalog No :	YT4591
Reactivity :	Human;Mouse;Rat
Applications :	WB;IHC;IF;ELISA
Target :	TDE1
Fields :	>>Viral life cycle - HIV-1
Gene Name :	SERINC3
Protein Name :	Serine incorporator 3
Human Gene Id :	10955
Human Swiss Prot No :	Q13530
Mouse Gene Id :	26943
Mouse Swiss Prot No :	Q9QZ19
Immunogen :	The antiserum was produced against synthesized peptide derived from human SERC3. AA range:361-410
Specificity :	TDE1 Polyclonal Antibody detects endogenous levels of TDE1 protein.
Formulation :	Liquid in PBS containing 50% glycerol, 0.5% BSA and 0.02% sodium azide.
Source :	Polyclonal, Rabbit,IgG
Dilution :	WB 1:500 - 1:2000. IHC 1:100 - 1:300. IF 1:200 - 1:1000. ELISA: 1:20000. Not yet tested in other applications.
Purification :	The antibody was affinity-purified from rabbit antiserum by affinity-chromatography using epitope-specific immunogen.
Concentration :	1 mg/ml

Storage Stability :	-15°C to -25°C/1 year(Do not lower than -25°C)
Observed Band :	52kD
Background :	function:May be involved in cellular transformation.,PTM:N-glycosylated.,similarity:Belongs to the TDE1 family.,tissue specificity:Ubiquitous. Expression levels were increased fourfold to tenfold in lung tumor tissues compared with normal pulmonary tissues.,
Function :	function:May be involved in cellular transformation.,PTM:N-glycosylated.,similarity:Belongs to the TDE1 family.,tissue specificity:Ubiquitous. Expression levels were increased fourfold to tenfold in lung tumor tissues compared with normal pulmonary tissues.,
Subcellular Location :	Cell membrane ; Multi-pass membrane protein . Golgi apparatus membrane ; Multi-pass membrane protein .; Cytoplasm, perinuclear region . (Microbial infection) Upon HIV-1 infection, it is redirected to perinuclear region following interaction with HIV-1 Nef, excluding it from virions particles, thereby preventing subsequent antiviral defense activity (Probable). .
Expression :	Ubiquitous. Expression levels were increased fourfold to tenfold in lung tumor tissues compared with normal pulmonary tissues.
Sort :	17016
No4 :	1
Host :	Rabbit
Modifications :	Unmodified

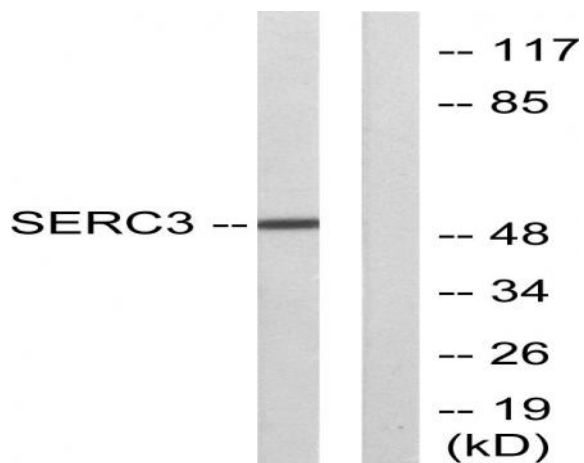
Products Images



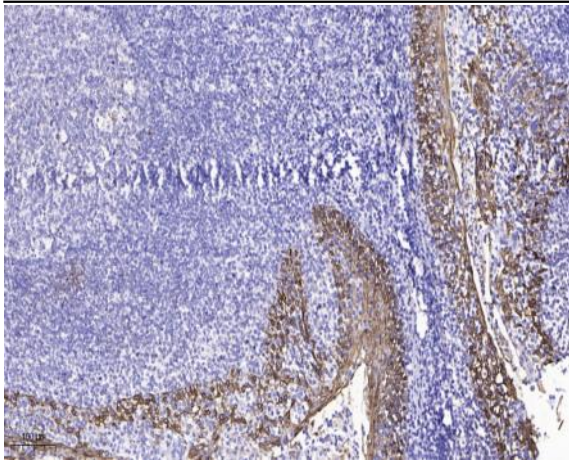
Western Blot analysis of various cells using TDE1 Polyclonal Antibody



Immunofluorescence analysis of HepG2 cells, using SERC3 Antibody. The picture on the right is blocked with the synthesized peptide.



Western blot analysis of lysates from 293 cells, using SERC3 Antibody. The lane on the right is blocked with the synthesized peptide.



Immunohistochemical analysis of paraffin-embedded human tonsil. 1, Antibody was diluted at 1:200(4° overnight). 2, Tris-EDTA,pH9.0 was used for antigen retrieval. 3,Secondary antibody was diluted at 1:200(room temperature, 45min).