

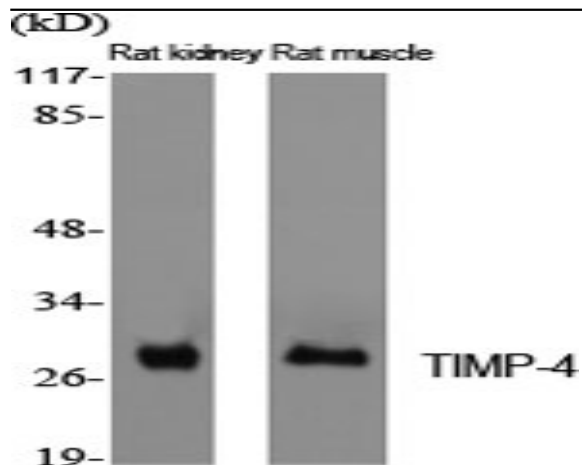
## TIMP-4 Polyclonal Antibody

<b>Catalog No :</b>	YT4661
<b>Reactivity :</b>	Human;Mouse;Rat
<b>Applications :</b>	WB;IHC;IF;ELISA
<b>Target :</b>	TIMP-4
<b>Gene Name :</b>	TIMP4
<b>Protein Name :</b>	Metalloproteinase inhibitor 4
<b>Human Gene Id :</b>	7079
<b>Human Swiss Prot No :</b>	Q99727
<b>Mouse Gene Id :</b>	110595
<b>Mouse Swiss Prot No :</b>	Q9JHB3
<b>Rat Gene Id :</b>	680130
<b>Rat Swiss Prot No :</b>	P81556
<b>Immunogen :</b>	The antiserum was produced against synthesized peptide derived from human TIMP4. AA range:175-224
<b>Specificity :</b>	TIMP-4 Polyclonal Antibody detects endogenous levels of TIMP-4 protein.
<b>Formulation :</b>	Liquid in PBS containing 50% glycerol, 0.5% BSA and 0.02% sodium azide.
<b>Source :</b>	Polyclonal, Rabbit,IgG
<b>Dilution :</b>	WB 1:500 - 1:2000. IHC 1:100 - 1:300. ELISA: 1:20000.. IF 1:50-200
<b>Purification :</b>	The antibody was affinity-purified from rabbit antiserum by affinity-chromatography using epitope-specific immunogen.

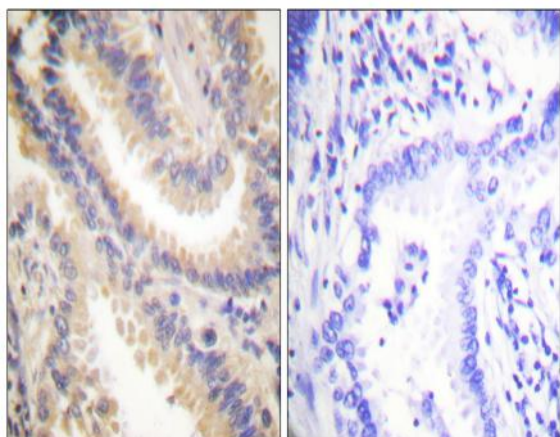
<b>Concentration :</b>	1 mg/ml
<b>Storage Stability :</b>	-15°C to -25°C/1 year(Do not lower than -25°C)
<b>Observed Band :</b>	26kD
<b>Background :</b>	This gene belongs to the TIMP gene family. The proteins encoded by this gene family are inhibitors of the matrix metalloproteinases, a group of peptidases involved in degradation of the extracellular matrix. The secreted, netrin domain-containing protein encoded by this gene is involved in regulation of platelet aggregation and recruitment and may play role in hormonal regulation and endometrial tissue remodeling. [provided by RefSeq, Jul 2008],
<b>Function :</b>	function:Complexes with metalloproteinases (such as collagenases) and irreversibly inactivates them. Known to act on MMP-1, MMP-2, MMP-3, MMP-7 and MMP-9.,similarity:Belongs to the protease inhibitor I35 (TIMP) family.,similarity:Contains 1 NTR domain.,tissue specificity:Abundant in heart and present at low levels in many other tissues.,
<b>Subcellular Location :</b>	Secreted.
<b>Expression :</b>	Abundant in heart and present at low levels in many other tissues.
<b>Sort :</b>	17167
<b>No4 :</b>	1
<b>Host :</b>	Rabbit
<b>Modifications :</b>	Unmodified

---

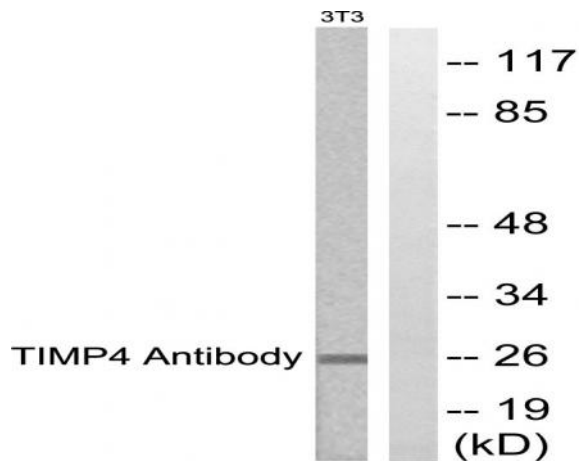
## Products Images



Western Blot analysis of various cells using TIMP-4 Polyclonal Antibody diluted at 1:2000. Secondary antibody(catalog#:RS0002) was diluted at 1:20000



Immunohistochemistry analysis of paraffin-embedded human lung carcinoma tissue, using TIMP4 Antibody. The picture on the right is blocked with the synthesized peptide.



Western blot analysis of lysates from NIH/3T3 cells, using TIMP4 Antibody. The lane on the right is blocked with the synthesized peptide.