

## TIRAP Polyclonal Antibody

<b>Catalog No :</b>	YT4667
<b>Reactivity :</b>	Human;Mouse
<b>Applications :</b>	IHC;IF;WB;ELISA
<b>Target :</b>	TIRAP
<b>Fields :</b>	>>NF-kappa B signaling pathway;>>Toll-like receptor signaling pathway;>>Alcoholic liver disease;>>Pathogenic Escherichia coli infection;>>Salmonella infection;>>Pertussis;>>Tuberculosis;>>Hepatitis B;>>PD-L1 expression and PD-1 checkpoint pathway in cancer;>>Lipid and atherosclerosis
<b>Gene Name :</b>	TIRAP
<b>Protein Name :</b>	Toll/interleukin-1 receptor domain-containing adapter protein
<b>Human Gene Id :</b>	114609
<b>Human Swiss Prot No :</b>	P58753
<b>Mouse Gene Id :</b>	117149
<b>Mouse Swiss Prot No :</b>	Q99JY1
<b>Immunogen :</b>	The antiserum was produced against synthesized peptide derived from human TIRAP. AA range:52-101
<b>Specificity :</b>	TIRAP Polyclonal Antibody detects endogenous levels of TIRAP protein.
<b>Formulation :</b>	Liquid in PBS containing 50% glycerol, 0.5% BSA and 0.02% sodium azide.
<b>Source :</b>	Polyclonal, Rabbit,IgG
<b>Dilution :</b>	WB 1:500-2000 IHC 1:100 - 1:300. ELISA: 1:20000.. IF 1:50-200
<b>Purification :</b>	The antibody was affinity-purified from rabbit antiserum by affinity-

chromatography using epitope-specific immunogen.

---

**Concentration :** 1 mg/ml

---

**Storage Stability :** -15°C to -25°C/1 year(Do not lower than -25°C)

---

**Molecularweight :** 24kD

---

**Cell Pathway :** Toll\_Like;

---

**Background :** The innate immune system recognizes microbial pathogens through Toll-like receptors (TLRs), which identify pathogen-associated molecular patterns. Different TLRs recognize different pathogen-associated molecular patterns and all TLRs have a Toll-interleukin 1 receptor (TIR) domain, which is responsible for signal transduction. The protein encoded by this gene is a TIR adaptor protein involved in the TLR4 signaling pathway of the immune system. It activates NF-kappa-B, MAPK1, MAPK3 and JNK, which then results in cytokine secretion and the inflammatory response. Alternative splicing of this gene results in several transcript variants; however, not all variants have been fully described. [provided by RefSeq, Jul 2008],

---

**Function :** function:Adapter involved in the TLR4 signaling pathway in the innate immune response. Acts via IRAK2 and TRAF-6, leading to the activation of NF-kappa-B, MAPK1, MAPK3 and JNK, resulting in cytokine secretion and the inflammatory response.,polymorphism:Genetic variation in TIRAP can influence susceptibility or resistance to invasive pneumococcal disease, bacteremia, malaria and tuberculosi.,similarity:Contains 1 TIR domain.,subunit:Homodimer. Also forms heterodimers with MyD88. Binds to TLR4 and IRAK2 via their respective TIR domains. Binds to PKR and TBK1. Does not interact with IRAK1, nor TLR9.,tissue specificity:Highly expressed in liver, kidney, spleen, skeletal muscle and heart. Also detected in peripheral blood leukocytes, lung, placenta, small intestine, thymus, colon and brain.,

---

**Subcellular Location :** Cytoplasm . Cell membrane . Membrane . Colocalizes with DAB2IP at the plasma membrane.

---

**Expression :** Highly expressed in liver, kidney, spleen, skeletal muscle and heart. Also detected in peripheral blood leukocytes, lung, placenta, small intestine, thymus, colon and brain.

---

**Tag :** orthogonal

---

**Sort :** 1240

---

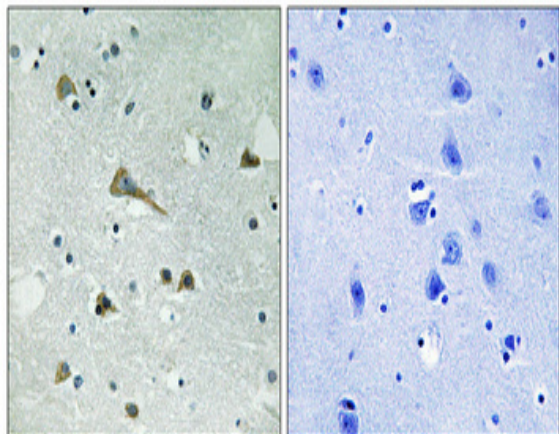
**No4 :** 1

---

**Host :** Rabbit**Modifications :** Unmodified

---

## Products Images



Immunohistochemical analysis of paraffin-embedded Human brain. Antibody was diluted at 1:100(4° overnight). High-pressure and temperature Tris-EDTA,pH8.0 was used for antigen retrieval. Negative control (right) obtained from antibody was pre-absorbed by immunogen peptide.