

TM4SF1 Polyclonal Antibody

Catalog No :	YT4675
Reactivity :	Human;Mouse
Applications :	IHC;IF;ELISA
Target :	TM4SF1
Gene Name :	TM4SF1
Protein Name :	Transmembrane 4 L6 family member 1
Human Gene Id :	4071
Human Swiss Prot No :	P30408
Mouse Gene Id :	17112
Mouse Swiss Prot No :	Q64302
Immunogen :	The antiserum was produced against synthesized peptide derived from human T4S1. AA range:1-50
Specificity :	TM4SF1 Polyclonal Antibody detects endogenous levels of TM4SF1 protein.
Formulation :	Liquid in PBS containing 50% glycerol, 0.5% BSA and 0.02% sodium azide.
Source :	Polyclonal, Rabbit,IgG
Dilution :	IHC 1:100 - 1:300. ELISA: 1:20000.. IF 1:50-200
Purification :	The antibody was affinity-purified from rabbit antiserum by affinity-chromatography using epitope-specific immunogen.
Concentration :	1 mg/ml
Storage Stability :	-15°C to -25°C/1 year(Do not lower than -25°C)

Molecularweight : 22kD

Background : The protein encoded by this gene is a member of the transmembrane 4 superfamily, also known as the tetraspanin family. Most of these members are cell-surface proteins that are characterized by the presence of four hydrophobic domains. The proteins mediate signal transduction events that play a role in the regulation of cell development, activation, growth and motility. This encoded protein is a cell surface antigen and is highly expressed in different carcinomas. [provided by RefSeq, Jul 2008],

Function : similarity:Belongs to the L6 tetraspanin family.,subunit:Present in high molecular weight complexes in tumor cells.,tissue specificity:Highly expressed on lung, breast, colon, and ovarian carcinomas. It is also present on some normal cells, endothelial cells in particular.,

Subcellular Location : Membrane; Multi-pass membrane protein. Colocalizes with SDCBP2 in the apical region of the cell (PubMed:11102519). .

Expression : Highly expressed in lung, breast, colon and ovarian carcinomas. It is also present on some normal cells, endothelial cells in particular.

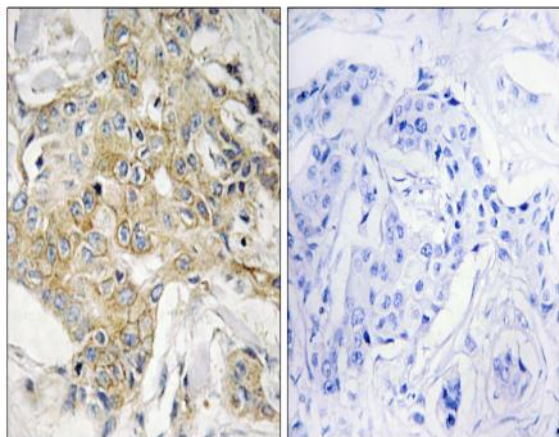
Sort : 17218

No4 : 1

Host : Rabbit

Modifications : Unmodified

Products Images



Immunohistochemistry analysis of paraffin-embedded human breast carcinoma tissue, using T4S1 Antibody. The picture on the right is blocked with the synthesized peptide.