

TMC8 Polyclonal Antibody

Catalog No :	YT4676
Reactivity :	Human;Mouse;Rat
Applications :	WB;IHC;IF;ELISA
Target :	TMC8
Gene Name :	TMC8
Protein Name :	Transmembrane channel-like protein 8
Human Gene Id :	147138
Human Swiss Prot No :	Q8IU68
Mouse Gene Id :	217356
Mouse Swiss Prot No :	Q7TN58
Immunogen :	The antiserum was produced against synthesized peptide derived from human TMC8. AA range:601-650
Specificity :	TMC8 Polyclonal Antibody detects endogenous levels of TMC8 protein.
Formulation :	Liquid in PBS containing 50% glycerol, 0.5% BSA and 0.02% sodium azide.
Source :	Polyclonal, Rabbit,IgG
Dilution :	WB 1:500 - 1:2000. IHC 1:100 - 1:300. ELISA: 1:5000.. IF 1:50-200
Purification :	The antibody was affinity-purified from rabbit antiserum by affinity-chromatography using epitope-specific immunogen.
Concentration :	1 mg/ml
Storage Stability :	-15°C to -25°C/1 year(Do not lower than -25°C)

Observed Band : 81kD

Background : Epidermodysplasia verruciformis (EV) is an autosomal recessive dermatosis characterized by abnormal susceptibility to human papillomaviruses (HPVs) and a high rate of progression to squamous cell carcinoma on sun-exposed skin. EV is caused by mutations in either of two adjacent genes located on chromosome 17q25.3. Both of these genes encode integral membrane proteins that localize to the endoplasmic reticulum and are predicted to form transmembrane channels. This gene encodes a transmembrane channel-like protein with 8 predicted transmembrane domains and 3 leucine zipper motifs. [provided by RefSeq, Jul 2008],

Function : disease:Defects in TMC8 are a cause of epidermodysplasia verruciformis (EV) [MIM:226400]. It is a rare autosomal recessive genodermatosis associated with a high risk of skin carcinoma that results from an abnormal susceptibility to infection by specific human papillomaviruses. Infection leads to persistent wart-like or macular lesions.,online information:TMC8 mutation db,similarity:Belongs to the TMC family.,tissue specificity:Expressed in placenta, prostate and testis.,

Subcellular Location : Endoplasmic reticulum membrane ; Multi-pass membrane protein .

Expression : Expressed in placenta, prostate and testis.

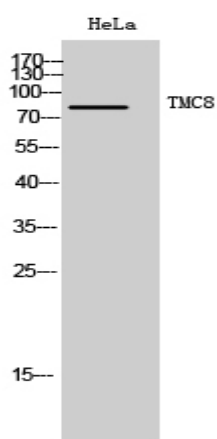
Sort : 17227

No4 : 1

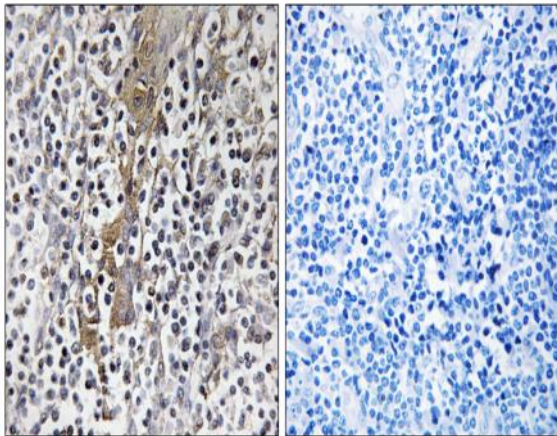
Host : Rabbit

Modifications : Unmodified

Products Images



Western Blot analysis of HeLa cells using TMC8 Polyclonal Antibody. Secondary antibody(catalog#:RS0002) was diluted at 1:20000



Immunohistochemistry analysis of paraffin-embedded human tonsil, using TMC8 Antibody. The picture on the right is blocked with the synthesized peptide.