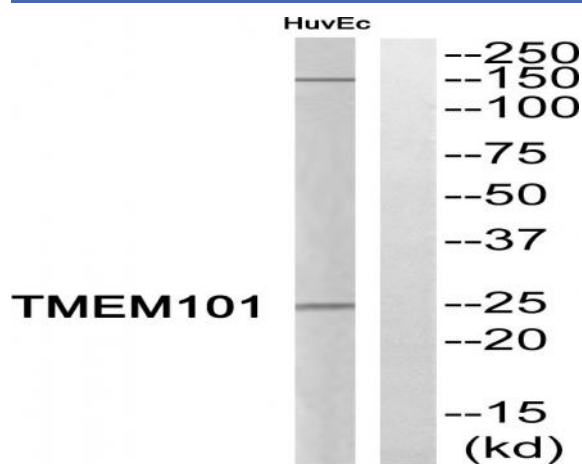


TMEM101 Polyclonal Antibody

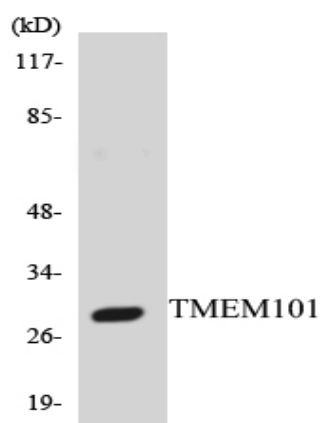
Catalog No :	YT4677
Reactivity :	Human;Mouse
Applications :	WB;ELISA
Target :	TMEM101
Gene Name :	TMEM101
Protein Name :	Transmembrane protein 101
Human Gene Id :	84336
Human Swiss Prot No :	Q96IK0
Mouse Gene Id :	76547
Mouse Swiss Prot No :	Q91VP7
Immunogen :	The antiserum was produced against synthesized peptide derived from human TMEM101. AA range:101-150
Specificity :	TMEM101 Polyclonal Antibody detects endogenous levels of TMEM101 protein.
Formulation :	Liquid in PBS containing 50% glycerol, 0.5% BSA and 0.02% sodium azide.
Source :	Polyclonal, Rabbit,IgG
Dilution :	WB 1:500 - 1:2000. ELISA: 1:10000. Not yet tested in other applications.
Purification :	The antibody was affinity-purified from rabbit antiserum by affinity-chromatography using epitope-specific immunogen.
Concentration :	1 mg/ml
Storage Stability :	-15°C to -25°C/1 year(Do not lower than -25°C)

Observed Band :	28kD
Background :	function:May activate NF-kappa-B signaling pathways.,
Function :	function:May activate NF-kappa-B signaling pathways.,
Subcellular Location :	Membrane ; Multi-pass membrane protein .
Expression :	Lung,Muscle,
Sort :	17230
No4 :	1
Host :	Rabbit
Modifications :	Unmodified

Products Images



Western blot analysis of TMEM101 Antibody. The lane on the right is blocked with the TMEM101 peptide.



Western blot analysis of the lysates from HepG2 cells using TMEM101 antibody.