

**TMEM16A Polyclonal Antibody**

<b>Catalog No :</b>	YT4679
<b>Reactivity :</b>	Human;Mouse;
<b>Applications :</b>	IF;ELISA
<b>Target :</b>	TMEM16A
<b>Gene Name :</b>	ANO1
<b>Protein Name :</b>	Anoctamin-1
<b>Human Gene Id :</b>	55107
<b>Human Swiss Prot No :</b>	Q5XXA6
<b>Mouse Swiss Prot No :</b>	Q8BHY3
<b>Immunogen :</b>	The antiserum was produced against synthesized peptide derived from human TM16A. AA range:921-970
<b>Specificity :</b>	TMEM16A Polyclonal Antibody detects endogenous levels of TMEM16A protein.
<b>Formulation :</b>	Liquid in PBS containing 50% glycerol, 0.5% BSA and 0.02% sodium azide.
<b>Source :</b>	Polyclonal, Rabbit,IgG
<b>Dilution :</b>	IF 1:200 - 1:1000. ELISA: 1:20000. Not yet tested in other applications.
<b>Purification :</b>	The antibody was affinity-purified from rabbit antiserum by affinity-chromatography using epitope-specific immunogen.
<b>Concentration :</b>	1 mg/ml
<b>Storage Stability :</b>	-15°C to -25°C/1 year(Do not lower than -25°C)
<b>Molecularweight :</b>	114kD

**Background :** domain:The region spanning the fifth and sixth transmembrane domains probably forms the pore-forming region.,function:Acts as a calcium-activated chloride channel. Required for normal tracheal development.,similarity:Belongs to the anoctamin family.,tissue specificity:Broadly expressed with higher levels in liver and skeletal muscle.,

**Function :** domain:The region spanning the fifth and sixth transmembrane domains probably forms the pore-forming region.,function:Acts as a calcium-activated chloride channel. Required for normal tracheal development.,similarity:Belongs to the anoctamin family.,tissue specificity:Broadly expressed with higher levels in liver and skeletal muscle.,

**Subcellular Location :** Cell membrane ; Multi-pass membrane protein . Cytoplasm . Cytoplasmic localization seen in neoplastic cells of head and neck squamous cell carcinoma (HNSCC) tumors. .

**Expression :** Broadly expressed with higher levels in liver, skeletal muscle and gastrointestinal muscles.

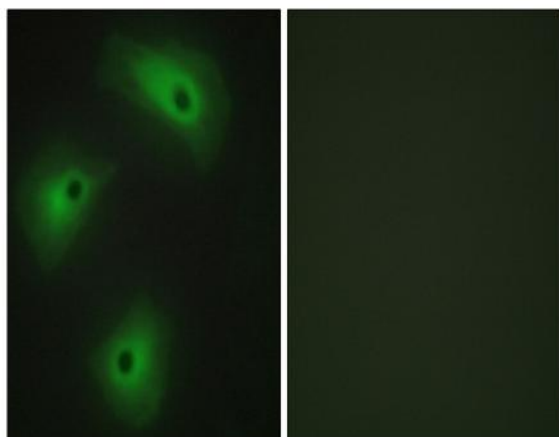
**Sort :** 17232

**No4 :** 1

**Host :** Rabbit

**Modifications :** Unmodified

## Products Images



Immunofluorescence analysis of HeLa cells, using TM16A Antibody. The picture on the right is blocked with the synthesized peptide.