

**TMEM185A Polyclonal Antibody**

<b>Catalog No :</b>	YT4680
<b>Reactivity :</b>	Human;Mouse
<b>Applications :</b>	WB;IHC;IF;ELISA
<b>Target :</b>	TMEM185A
<b>Gene Name :</b>	TMEM185A
<b>Protein Name :</b>	Transmembrane protein 185A
<b>Human Gene Id :</b>	84548
<b>Human Swiss Prot No :</b>	Q8NFB2
<b>Immunogen :</b>	The antiserum was produced against synthesized peptide derived from human TMEM185A. AA range:290-339
<b>Specificity :</b>	TMEM185A Polyclonal Antibody detects endogenous levels of TMEM185A protein.
<b>Formulation :</b>	Liquid in PBS containing 50% glycerol, 0.5% BSA and 0.02% sodium azide.
<b>Source :</b>	Polyclonal, Rabbit,IgG
<b>Dilution :</b>	WB 1:500 - 1:2000. IHC 1:100 - 1:300. IF 1:200 - 1:1000. ELISA: 1:20000. Not yet tested in other applications.
<b>Purification :</b>	The antibody was affinity-purified from rabbit antiserum by affinity-chromatography using epitope-specific immunogen.
<b>Concentration :</b>	1 mg/ml
<b>Storage Stability :</b>	-15°C to -25°C/1 year(Do not lower than -25°C)
<b>Observed Band :</b>	41kD

**Background :** The protein encoded by this gene is predicted to be a transmembrane protein. This gene is best known for localizing to the CpG island of the fragile site FRAXF. The 5' untranslated region of this gene contains a CGG trinucleotide repeat sequence that normally consists of 7-40 tandem CGG repeats but which can expand to greater than 300 repeats. Methylation of the CpG island leads to transcriptional silencing of this gene, but neither the silencing nor an expanded repeat region appear to manifest itself in a clear phenotypic manner. Alternative splicing results in multiple transcript variants. A pseudogene of this gene has been defined on the X chromosome. [provided by RefSeq, Aug 2013],

**Function :** similarity:Belongs to the TMEM185 family.,

**Subcellular Location :** Cell projection, dendrite . Membrane ; Multi-pass membrane protein .

**Expression :** Brain,Iris,Liver,PCR rescued clones,Testis,

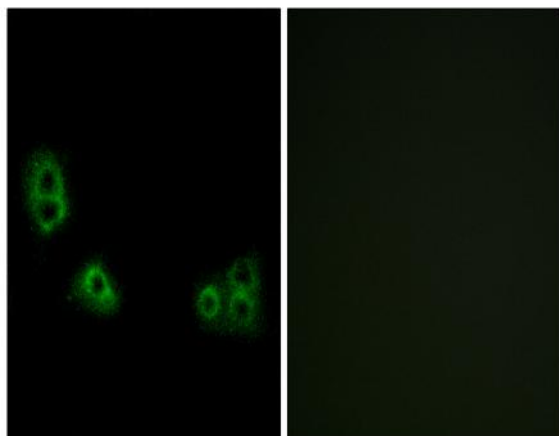
**Sort :** 17234

**No4 :** 1

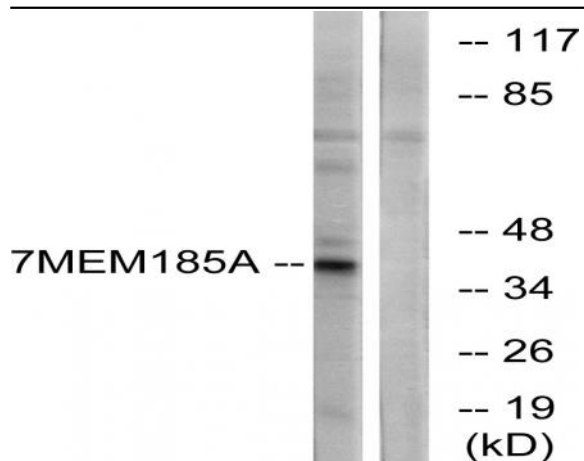
**Host :** Rabbit

**Modifications :** Unmodified

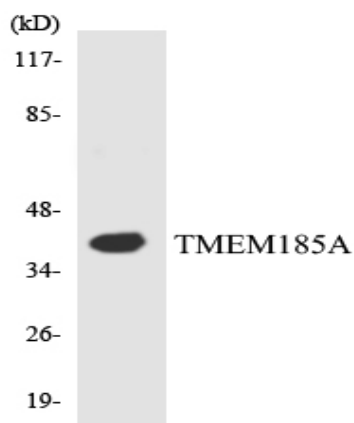
## Products Images



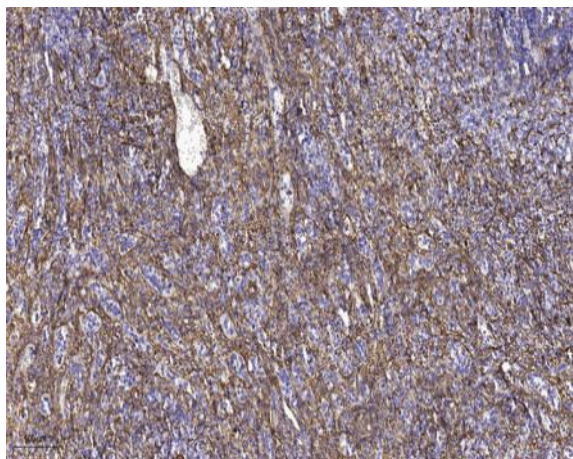
Immunofluorescence analysis of MCF7 cells, using TMEM185A Antibody. The picture on the right is blocked with the synthesized peptide.



Western blot analysis of lysates from K562 cells, using TMEM185A Antibody. The lane on the right is blocked with the synthesized peptide.



Western blot analysis of the lysates from HT-29 cells using TMEM185A antibody.



Immunohistochemical analysis of paraffin-embedded human spleen tissue. 1, primary Antibody was diluted at 1:200(4° overnight). 2, Sodium citrate pH 6.0 was used for antigen retrieval(>98 °C,20min). 3, Secondary antibody was diluted at 1:200