

**TOB1 Polyclonal Antibody**

<b>Catalog No :</b>	YT4693
<b>Reactivity :</b>	Human;Mouse;Rat
<b>Applications :</b>	WB;IHC;IF;ELISA
<b>Target :</b>	TOB1
<b>Fields :</b>	>>RNA degradation
<b>Gene Name :</b>	TOB1
<b>Protein Name :</b>	Protein Tob1
<b>Human Gene Id :</b>	10140
<b>Human Swiss Prot No :</b>	P50616
<b>Mouse Swiss Prot No :</b>	Q61471
<b>Rat Swiss Prot No :</b>	Q8R5K6
<b>Immunogen :</b>	The antiserum was produced against synthesized peptide derived from human TOB1. AA range:130-179
<b>Specificity :</b>	TOB1 Polyclonal Antibody detects endogenous levels of TOB1 protein.
<b>Formulation :</b>	Liquid in PBS containing 50% glycerol, 0.5% BSA and 0.02% sodium azide.
<b>Source :</b>	Polyclonal, Rabbit,IgG
<b>Dilution :</b>	WB 1:500 - 1:2000. IHC 1:100 - 1:300. ELISA: 1:10000.. IF 1:50-200
<b>Purification :</b>	The antibody was affinity-purified from rabbit antiserum by affinity-chromatography using epitope-specific immunogen.
<b>Concentration :</b>	1 mg/ml

**Storage Stability :** -15°C to -25°C/1 year(Do not lower than -25°C)

**Observed Band :** 40kD

**Background :** This gene encodes a member of the transducer of erbB-2 /B-cell translocation gene protein family. Members of this family are anti-proliferative factors that have the potential to regulate cell growth. The encoded protein may function as a tumor suppressor. Alternate splicing results in multiple transcript variants. [provided by RefSeq, Aug 2011],

**Function :** function:Anti-proliferative protein that interacts with the erbB-2 receptor tyrosine kinase. May physically and/or functionally interact with protein-tyrosine kinase receptors.,PTM:Phosphorylated on Ser and Thr residues.,similarity:Belongs to the BTG family.,subunit:Interacts with CNOT7.,tissue specificity:Ubiquitous.,

**Subcellular Location :** Cytoplasm . Nucleus . Only a small fraction localizes to the cytoplasm except in late S-phase where more than half of proteins become cytoplasmic. .

**Expression :** Ubiquitous.

**Tag :** orthogonal,hot

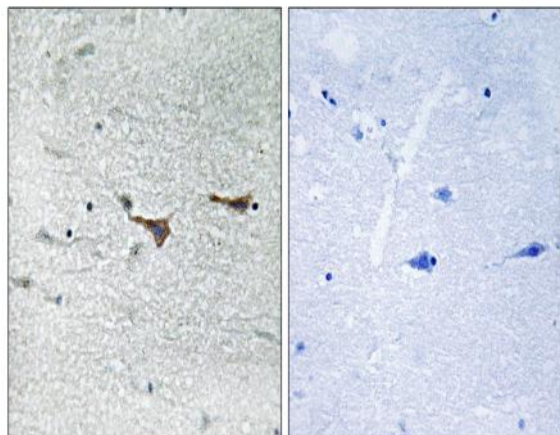
**Sort :** 17270

**No4 :** 1

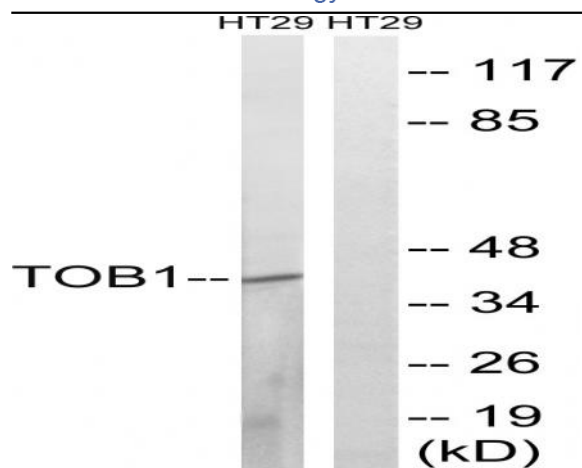
**Host :** Rabbit

**Modifications :** Unmodified

## Products Images



Immunohistochemistry analysis of paraffin-embedded human brain tissue, using TOB1 Antibody. The picture on the right is blocked with the synthesized peptide.



Western blot analysis of lysates from HT-29 cells, treated with serum 20% 15', using TOB1 Antibody. The lane on the right is blocked with the synthesized peptide.