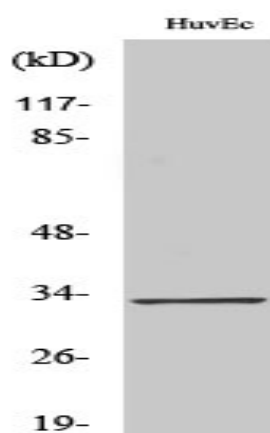


## Tra-2 $\alpha$ Polyclonal Antibody

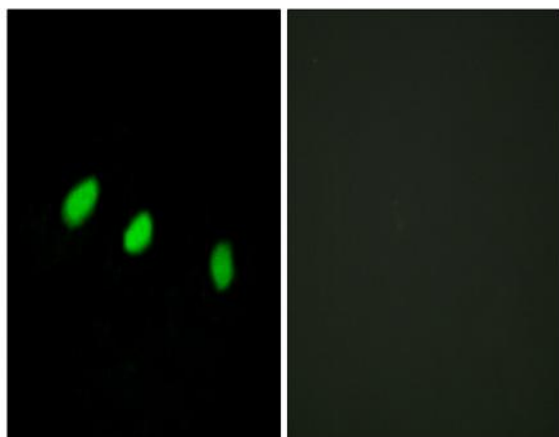
<b>Catalog No :</b>	YT4713
<b>Reactivity :</b>	Human;Mouse
<b>Applications :</b>	WB;IHC;IF;ELISA
<b>Target :</b>	Tra-2 $\alpha$
<b>Fields :</b>	>>Spliceosome;>>Alcoholic liver disease
<b>Gene Name :</b>	TRA2A
<b>Protein Name :</b>	Transformer-2 protein homolog alpha
<b>Human Gene Id :</b>	29896
<b>Human Swiss Prot No :</b>	Q13595
<b>Mouse Swiss Prot No :</b>	Q6PFR5
<b>Immunogen :</b>	The antiserum was produced against synthesized peptide derived from human TRA-2 alpha. AA range:221-270
<b>Specificity :</b>	Tra-2 $\alpha$ Polyclonal Antibody detects endogenous levels of Tra-2 $\alpha$ protein.
<b>Formulation :</b>	Liquid in PBS containing 50% glycerol, 0.5% BSA and 0.02% sodium azide.
<b>Source :</b>	Polyclonal, Rabbit,IgG
<b>Dilution :</b>	WB 1:500 - 1:2000. IHC 1:100 - 1:300. IF 1:200 - 1:1000. ELISA: 1:20000. Not yet tested in other applications.
<b>Purification :</b>	The antibody was affinity-purified from rabbit antiserum by affinity-chromatography using epitope-specific immunogen.
<b>Concentration :</b>	1 mg/ml
<b>Storage Stability :</b>	-15°C to -25°C/1 year(Do not lower than -25°C)

<b>Observed Band :</b>	33kD
<b>Cell Pathway :</b>	Spliceosome;
<b>Background :</b>	This gene is a member of the transformer 2 homolog family and encodes a protein with several RRM (RNA recognition motif) domains. This phosphorylated nuclear protein binds to specific RNA sequences and plays a role in the regulation of pre-mRNA splicing. Alternatively spliced transcript variants have been found for this gene. [provided by RefSeq, Sep 2013],
<b>Function :</b>	function:Sequence-specific RNA-binding protein which participates in the control of pre-mRNA splicing.,PTM:Phosphorylated in the RS domains.,similarity:Belongs to the splicing factor SR family.,similarity:Contains 1 RRM (RNA recognition motif) domain.,subunit:Binds to A3 enhancer proteins SRp75, SRp55, SRp40 and SRp30.,
<b>Subcellular Location :</b>	Nucleus .
<b>Expression :</b>	Cervix carcinoma,Epithelium,Hepatocyte,Lung,Testis,Uterus,
<b>Sort :</b>	23466
<b>No4 :</b>	1
<b>Host :</b>	Rabbit
<b>Modifications :</b>	Unmodified

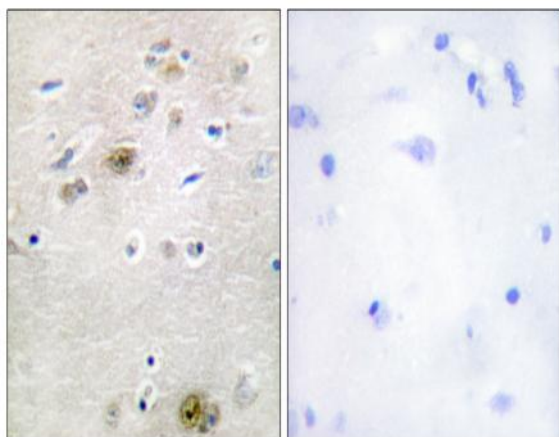
## Products Images



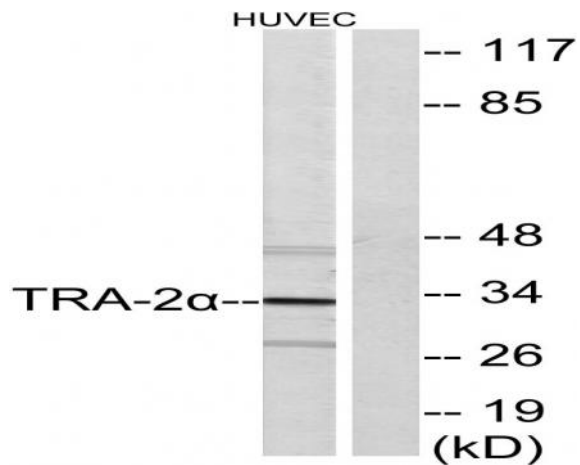
Western Blot analysis of various cells using Tra-2 $\alpha$  Polyclonal Antibody diluted at 1:500. Secondary antibody(catalog#:RS0002) was diluted at 1:20000 cells nucleus extracted by Minute TM Cytoplasmic and Nuclear Fractionation kit (SC-003, Invent biotech, MN, USA).



Immunofluorescence analysis of HeLa cells, using TRA-2 alpha Antibody. The picture on the right is blocked with the synthesized peptide.



Immunohistochemistry analysis of paraffin-embedded human brain tissue, using TRA-2 alpha Antibody. The picture on the right is blocked with the synthesized peptide.



Western blot analysis of lysates from HUVEC cells, using TRA-2 alpha Antibody. The lane on the right is blocked with the synthesized peptide.