

## TROP-2 Polyclonal Antibody

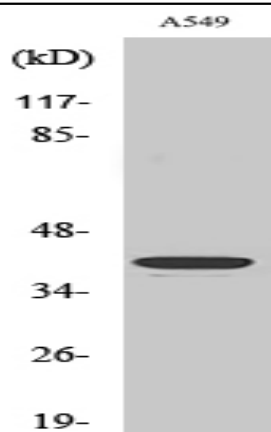
<b>Catalog No :</b>	YT4745
<b>Reactivity :</b>	Human;Mouse;Rat
<b>Applications :</b>	WB;IHC;IF;ELISA
<b>Target :</b>	TROP-2
<b>Gene Name :</b>	TACSTD2
<b>Protein Name :</b>	Tumor-associated calcium signal transducer 2
<b>Human Gene Id :</b>	4070
<b>Human Swiss Prot No :</b>	P09758
<b>Mouse Gene Id :</b>	56753
<b>Mouse Swiss Prot No :</b>	Q8BGV3
<b>Rat Gene Id :</b>	494343
<b>Rat Swiss Prot No :</b>	Q6P9Z6
<b>Immunogen :</b>	The antiserum was produced against synthesized peptide derived from human TACD2. AA range:131-180
<b>Specificity :</b>	TROP-2 Polyclonal Antibody detects endogenous levels of TROP-2 protein.
<b>Formulation :</b>	Liquid in PBS containing 50% glycerol, 0.5% BSA and 0.02% sodium azide.
<b>Source :</b>	Polyclonal, Rabbit,IgG
<b>Dilution :</b>	WB 1:500 - 1:2000. IHC 1:100 - 1:300. ELISA: 1:20000.. IF 1:50-200
<b>Purification :</b>	The antibody was affinity-purified from rabbit antiserum by affinity-chromatography using epitope-specific immunogen.

---

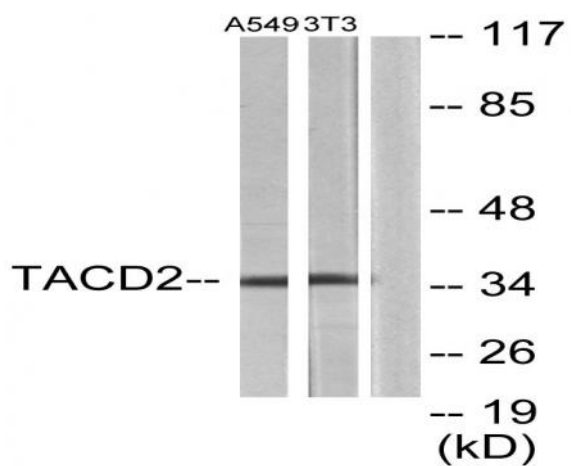
<b>Concentration :</b>	1 mg/ml
<b>Storage Stability :</b>	-15°C to -25°C/1 year(Do not lower than -25°C)
<b>Observed Band :</b>	35kD
<b>Background :</b>	This intronless gene encodes a carcinoma-associated antigen. This antigen is a cell surface receptor that transduces calcium signals. Mutations of this gene have been associated with gelatinous drop-like corneal dystrophy.[provided by RefSeq, Dec 2009],
<b>Function :</b>	disease:Defects in TACSTD2 are the cause of gelatinous drop-like corneal dystrophy (GDLD) [MIM:204870]; also known as lattice corneal dystrophy type III. GDLD is an autosomal recessive disorder characterized by grayish corneal amyloid deposits that cause severe visual impairment.,function:GA733 tumor-associated antigen gene family may function as growth factor receptors.,PTM:The N-terminus is blocked.,similarity:Contains 1 thyroglobulin type-1 domain.,tissue specificity:Placenta, pancreatic carcinoma cell lines.,
<b>Subcellular Location :</b>	Membrane; Single-pass type I membrane protein.
<b>Expression :</b>	Placenta, pancreatic carcinoma cell lines.
<b>Tag :</b>	hot
<b>Sort :</b>	23585
<b>No4 :</b>	1
<b>Host :</b>	Rabbit
<b>Modifications :</b>	Unmodified

---

## Products Images



Western Blot analysis of various cells using TROP-2 Polyclonal Antibody. Secondary antibody(catalog#:RS0002) was diluted at 1:20000



Western blot analysis of lysates from A549 and NIH/3T3 cells, using TACD2 Antibody. The lane on the right is blocked with the synthesized peptide.