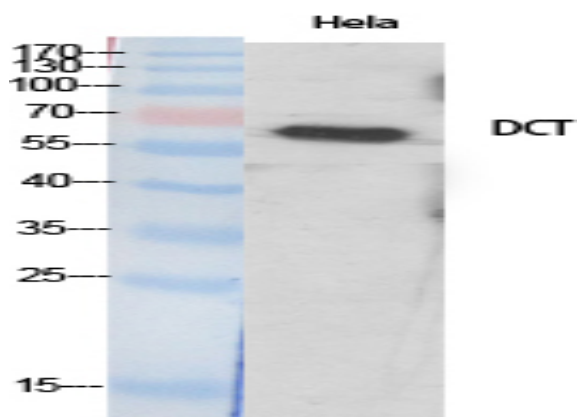


TRP2 Polyclonal Antibody

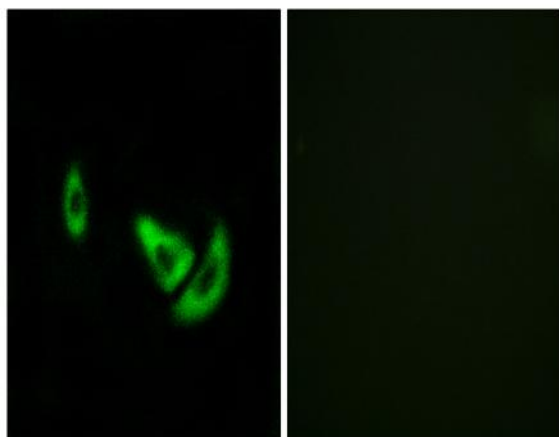
Catalog No :	YT4750
Reactivity :	Human;Mouse
Applications :	WB;IHC;IF;ELISA
Target :	TRP2
Fields :	>>Tyrosine metabolism;>>Metabolic pathways;>>Melanogenesis
Gene Name :	DCT
Protein Name :	L-dopachrome tautomerase
Human Gene Id :	1638
Human Swiss Prot No :	P40126
Mouse Gene Id :	13190
Mouse Swiss Prot No :	P29812
Immunogen :	The antiserum was produced against synthesized peptide derived from human DCT. AA range:51-100
Specificity :	TRP2 Polyclonal Antibody detects endogenous levels of TRP2 protein.
Formulation :	Liquid in PBS containing 50% glycerol, 0.5% BSA and 0.02% sodium azide.
Source :	Polyclonal, Rabbit,IgG
Dilution :	WB 1:500 - 1:2000. IF 1:200 - 1:1000. ELISA: 1:40000. Not yet tested in other applications.
Purification :	The antibody was affinity-purified from rabbit antiserum by affinity-chromatography using epitope-specific immunogen.
Concentration :	1 mg/ml

Storage Stability :	-15°C to -25°C/1 year(Do not lower than -25°C)
Observed Band :	60kD
Cell Pathway :	Tyrosine metabolism;Melanogenesis;
Background :	catalytic activity:L-dopachrome = 5,6-dihydroxyindole-2-carboxylate.,cofactor:Binds 2 zinc ions per subunit.,function:Involved in regulating eumelanin and phaeomelanin levels.,pathway:Pigment biosynthesis; melanin biosynthesis.,similarity:Belongs to the tyrosinase family.,subunit:Tyrosinase, TYRP1 and TYRP2 may form a multienzyme complex.,
Function :	catalytic activity:L-dopachrome = 5,6-dihydroxyindole-2-carboxylate.,cofactor:Binds 2 zinc ions per subunit.,function:Involved in regulating eumelanin and phaeomelanin levels.,pathway:Pigment biosynthesis; melanin biosynthesis.,similarity:Belongs to the tyrosinase family.,subunit:Tyrosinase, TYRP1 and TYRP2 may form a multienzyme complex.,
Subcellular Location :	Melanosome membrane ; Single-pass type I membrane protein . Melanosome . Proper trafficking to melanosome is regulated by SGSM2, ANKRD27, RAB9A, RAB32 and RAB38. .
Expression :	Liver,Lymphnode melanoma metastases,Mammary gland,Melanoma,
Tag :	orthogonal
Sort :	23599
No4 :	1
Host :	Rabbit
Modifications :	Unmodified

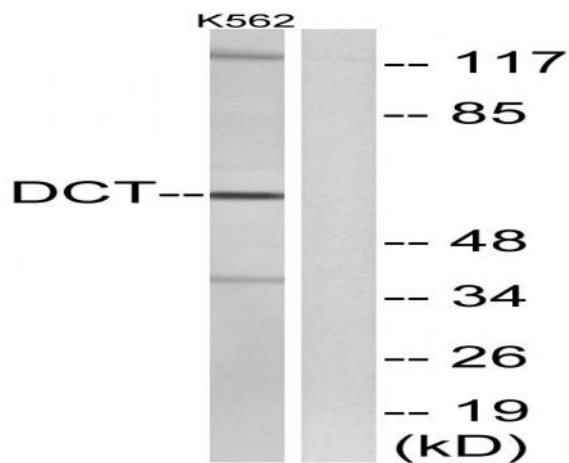
Products Images



Western Blot analysis of various cells using TRP2 Polyclonal Antibody diluted at 1:500. Secondary antibody(catalog#:RS0002) was diluted at 1:20000



Immunofluorescence analysis of A549 cells, using DCT Antibody. The picture on the right is blocked with the synthesized peptide.



Western blot analysis of lysates from K562 cells, using DCT Antibody. The lane on the right is blocked with the synthesized peptide.