

TSA-1 Polyclonal Antibody

Catalog No :	YT4757
Reactivity :	Human;Mouse
Applications :	IF;ELISA
Target :	TSA-1
Gene Name :	LY6E
Protein Name :	Lymphocyte antigen 6E
Human Gene Id :	4061
Human Swiss Prot No :	Q16553
Mouse Swiss Prot No :	Q64253
Immunogen :	The antiserum was produced against synthesized peptide derived from human LY6E. AA range:17-66
Specificity :	TSA-1 Polyclonal Antibody detects endogenous levels of TSA-1 protein.
Formulation :	Liquid in PBS containing 50% glycerol, 0.5% BSA and 0.02% sodium azide.
Source :	Polyclonal, Rabbit,IgG
Dilution :	IF 1:200 - 1:1000. ELISA: 1:20000. Not yet tested in other applications.
Purification :	The antibody was affinity-purified from rabbit antiserum by affinity-chromatography using epitope-specific immunogen.
Concentration :	1 mg/ml
Storage Stability :	-15°C to -25°C/1 year(Do not lower than -25°C)
Molecularweight :	14kD

Background : induction:By retinoic acid; in promyelocytic leukemia NB4 and in myeloblast HL-60 cell lines. Activated by IFN-alpha in monocytic cell line U-937 and in peripheral blood monocyte cells.,similarity:Contains 1 UPAR/Ly6 domain.,tissue specificity:Widely expressed, predominantly in liver, kidney, ovary, spleen and peripheral blood Leukocytes.,

Function : induction:By retinoic acid; in promyelocytic leukemia NB4 and in myeloblast HL-60 cell lines. Activated by IFN-alpha in monocytic cell line U-937 and in peripheral blood monocyte cells.,similarity:Contains 1 UPAR/Ly6 domain.,tissue specificity:Widely expressed, predominantly in liver, kidney, ovary, spleen and peripheral blood Leukocytes.,

Subcellular Location : Cell membrane ; Lipid-anchor, GPI-anchor .

Expression : Widely expressed, predominantly in liver, kidney, ovary, spleen and peripheral blood Leukocytes.

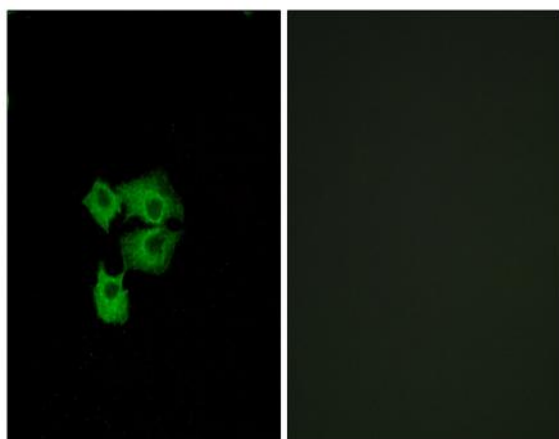
Sort : 23638

No4 : 1

Host : Rabbit

Modifications : Unmodified

Products Images



Immunofluorescence analysis of A549 cells, using LY6E Antibody. The picture on the right is blocked with the synthesized peptide.